
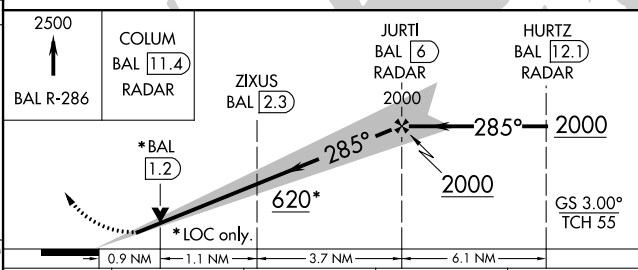
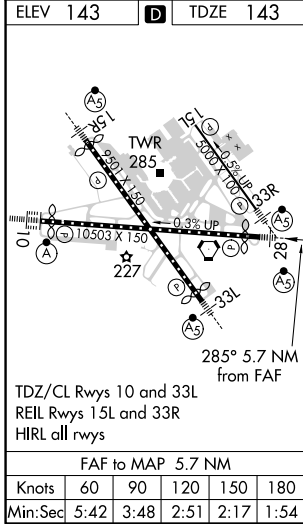
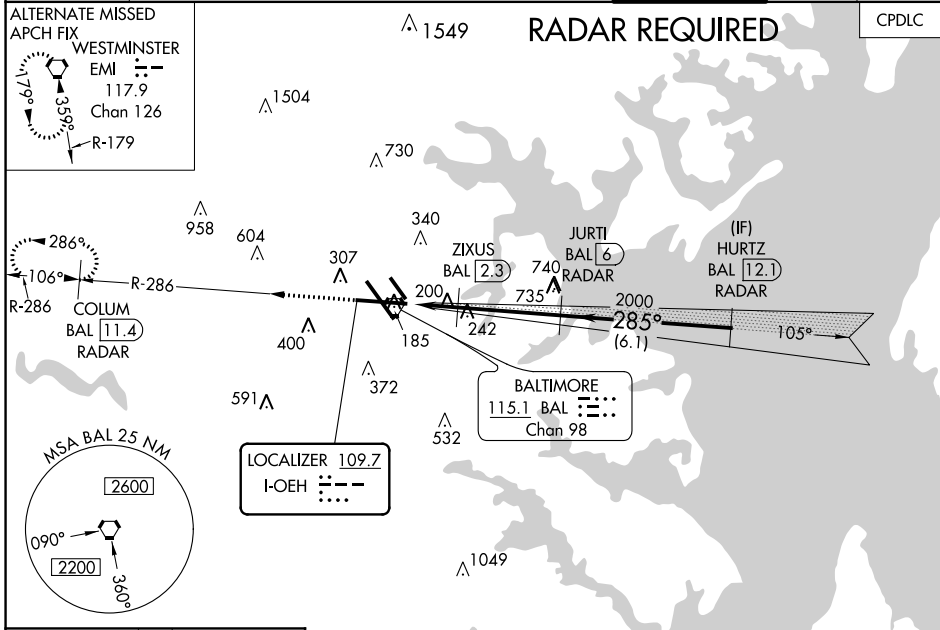


LOC I-OEH	APP CRS	Rwy Idg	9803
109.7	285°	TDZE	143
		Apt Elev	143

BALTIMORE/ WASHINGTON INTL THURGOOD MARSHALL (BWI) **ILS or LOC RWY 28**

<p>▼ DME or radar required. For inoperative MALS, increase S-LOC 28 Cat C/D visibility to 1½ mile, and increase ZIXUS fix S-LOC 28 Cat C/D visibility to RVR 4500.</p> <p>▲ **RVR 1800 authorized with the use of FD or AP or HUD to DA.</p>	<p>MALS</p> 	<p>MISSED APPROACH: Climb to 2500 on BAL VORTAC R-286 to COLUM/BAL 1.4 DME/RADAR and hold.</p>
--	---	--

D-ATIS	POTOMAC APP CON	BALTIMORE TOWER	GND CON	CLNC DEL
115.1 127.8	119.0 282.275 (020°-100°) 119.7 290.475 (101°-130°) 128.7 307.9 (131°-180°) (181°-019°)	119.4 257.8	121.9	118.05



CATEGORY	A	B	C	D
S-ILS 28	**343/24 200 (200-½)			
S-LOC 28	620/24	477 (500-½)	620/50	477 (500-1)
C CIRCLING	640-1 497 (500-1)	660-1 517 (600-1)	700-1½ 557 (600-½)	860-2¼ 717 (800-2¼)
ZIXUS FIX MINIMUMS (DME REQUIRED)				
S-LOC 28	460/24 317 (400-½)			
C CIRCLING	640-1 497 (500-1)	660-1 517 (600-1)	700-1½ 557 (600-½)	860-2¼ 717 (800-2¼)

NE-3, 05 NOV 2020 to 03 DEC 2020

NE-3, 05 NOV 2020 to 03 DEC 2020