

LOC I-RUX <b>111.7</b>	APP CRS <b>335°</b>	Rwy ldg TDZE 8301 <b>143</b> Apt Elev <b>146</b>
---------------------------	------------------------	--

## BALTIMORE/ WASHINGTON INTL THURGOOD MARSHALL (BWI)

### ILS or LOC RWY 33L

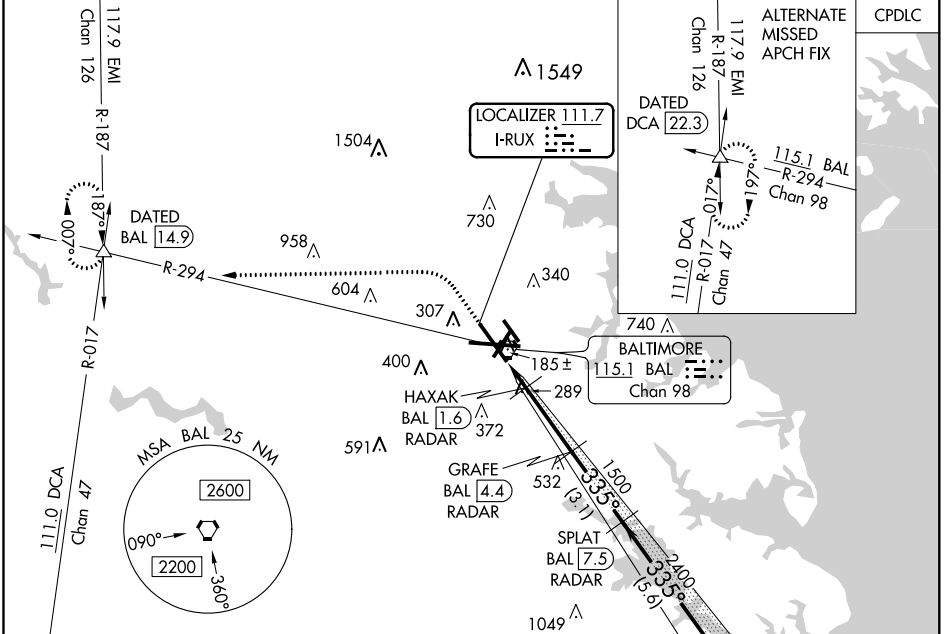
DME or RADAR required for LOC only. RADAR required for procedure entry.

Simultaneous approach authorized with ILS or LOC Rwy 33R. DME from BAL VORTAC.

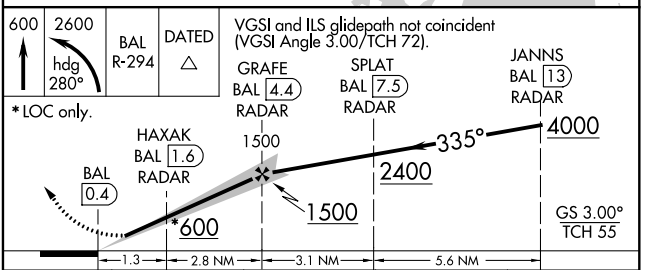
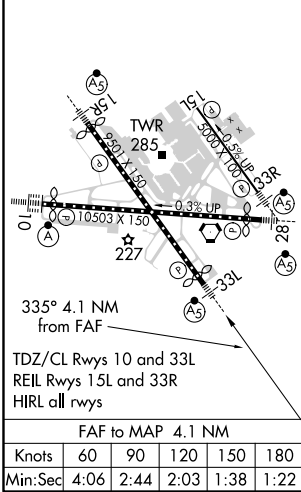
MALSR

MISSED APPROACH: Climb to 600 then climbing left turn to 2600 on heading 280° and BAL R-294 to DATED INT/BAL 14.9 DME and hold.

D-ATIS <b>115.1 127.8</b>	POTOMAC APP CON (020°-100°) <b>119.7 290.475</b> (131°-180°) (101°-130°) <b>128.7 307.9</b> (181°-019°)	BALTIMORE TOWER <b>119.4 257.8</b>	GND CON <b>121.9</b>	CLNC DEL <b>118.05</b>
------------------------------	---	---------------------------------------	-------------------------	---------------------------



ELEV 146 **D** TDZE 143



CATEGORY	A	B	C	D
S-ILS 33L	343/18 200 (200-½)			
S-LOC 33L	540/24	397 (400-½)	540/40	397 (400-¾)
<b>CIRCLING</b>	640-1 494 (500-1)	660-1 514 (600-1)	700-1½ 554 (600-1½)	880-2¼ 734 (800-2¼)

### ILS or LOC RWY 33L

NE-3, 05 NOV 2020 to 03 DEC 2020

NE-3, 05 NOV 2020 to 03 DEC 2020