

RAVNN SIX ARRIVAL (RNAV) Arrival Routes

POTOMAC APP CON
128.35 270.275
BWI D-ATIS
115.1 127.8

HUNNN

Landing BWI East:
Rwys 10, 15L/R:

Expect RADAR vectors to final approach course after HUNNN.

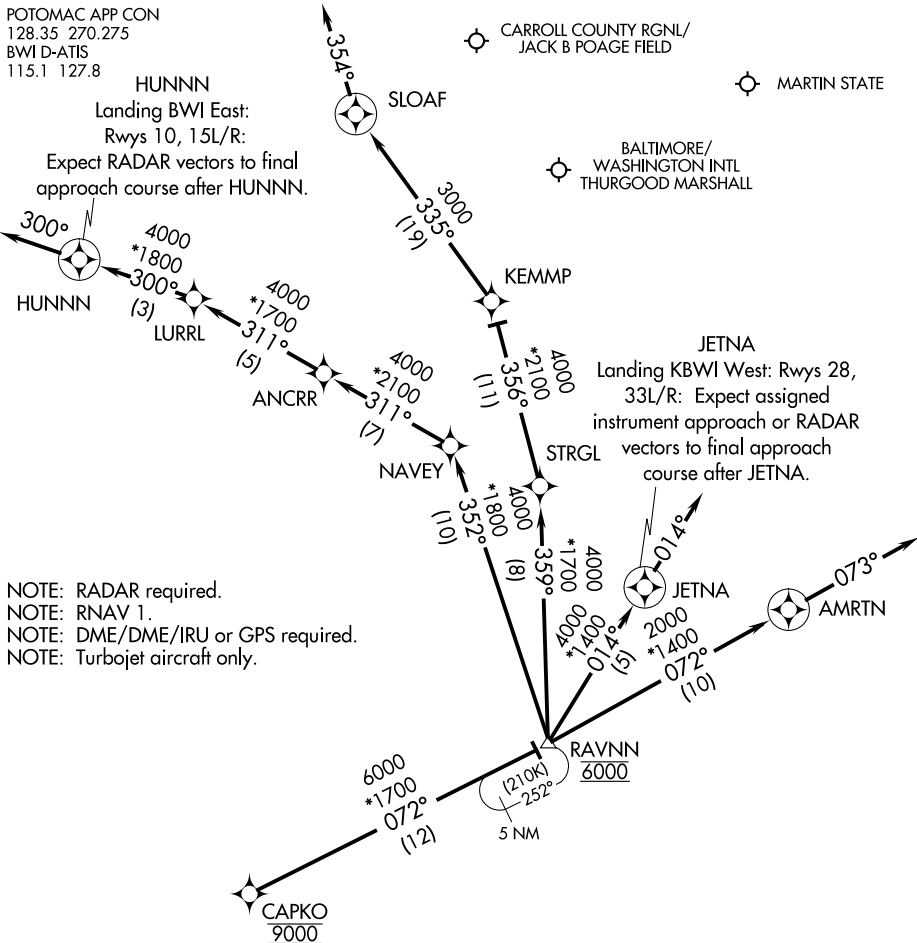
CARROLL COUNTY RGNL/
JACK B POAGE FIELD

MARTIN STATE

BALTIMORE/
WASHINGTON INTL
THURGOOD MARSHALL

JETNA

Landing KBWI West: Rwys 28,
33L/R: Expect assigned
instrument approach or RADAR
vectors to final approach
course after JETNA.



- NOTE: RADAR required.
- NOTE: RNAV 1.
- NOTE: DME/DME/IRU or GPS required.
- NOTE: Turbopjet aircraft only.

NOTE: Chart not to scale.

ARRIVAL ROUTE DESCRIPTION

From CAPKO on track 072° to cross RAVNN at 6000.

LANDING BWI RUNWAYS 10, 15L/R: From RAVNN on track 352° to NAVFY, then on track 311° to ANCRR, then on track 311° to LURRL, then on track 300° to HUNNN, then on track 300°.
Expect RADAR vectors to final approach course.

LANDING BWI RUNWAYS 28, 33L/R: From RAVNN on track 014° to JETNA, then on track 014°.
Expect assigned instrument approach or RADAR vectors to final approach course.

LANDING DMW: From CAPKO on track 072° to cross RAVNN at 6000, then on track 359° to STRGL, then on track 356° to KEMMP, then on track 335° to SLOAF, then on heading 354°.
Expect RADAR vectors to final approach course.

LANDING MTN: From CAPKO on track 072° to cross RAVNN at 6000, then on track 072° to AMRTN, then on track 073°. Expect RADAR vectors to final approach course.

NE-3, 05 NOV 2020 to 03 DEC 2020

NE-3, 05 NOV 2020 to 03 DEC 2020