


# RNAV (RNP) Z RWY 15R

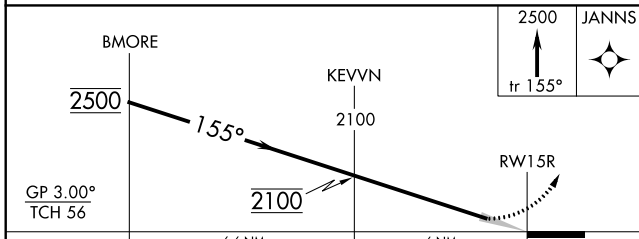
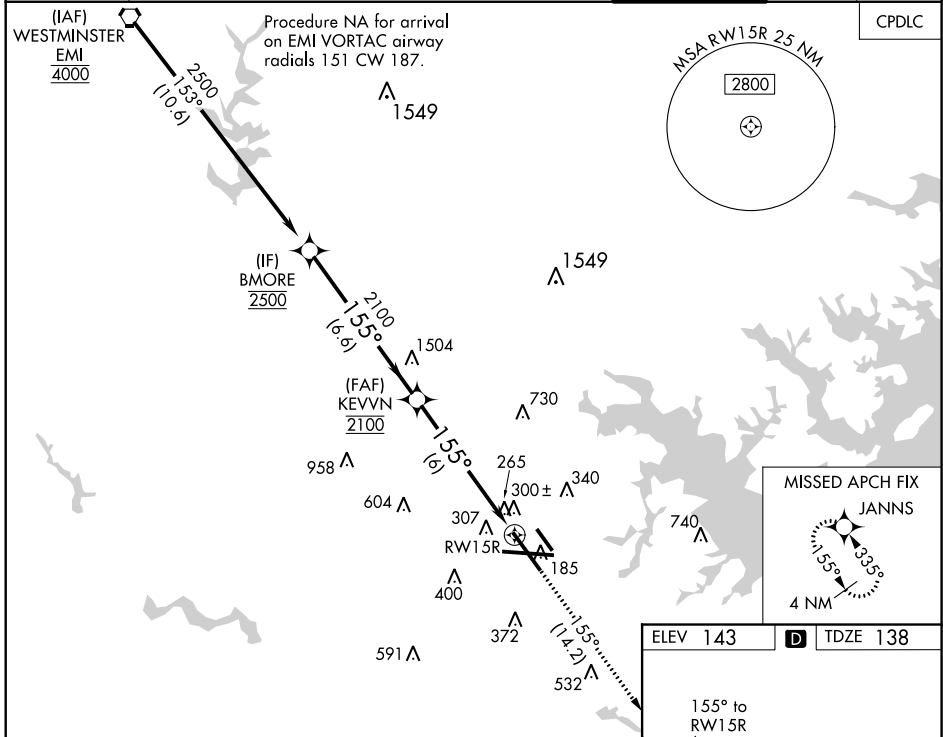
BALTIMORE/WASHINGTON INTL THURGOOD MARSHALL (BWI)

APP CRS <b>155°</b>	Rwy Idg TDZE Apt Elev	<b>8301</b> <b>138</b> <b>143</b>
------------------------	-----------------------------	---

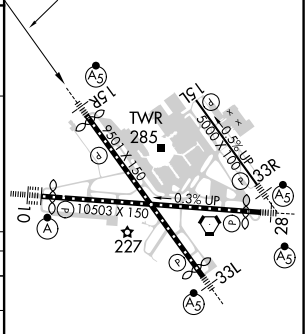
▼ For uncompensated Baro-VNAV systems, procedure NA below -12°C (11°F) or above 54°C (130°F). For inop MALSR, increase RNP 0.11 DA all Cats visibility to 1¼ mile, and RNP 0.30 DA all Cats visibility to 1½ mile. GPS Required.

MALSR   
MISSED APPROACH: Climb to 2500 on track 155° to JANNS and hold.

D-ATIS <b>115.1 127.8</b>	POTOMAC APP CON (020°-100°) <b>119.7 290.475</b> (131°-180°) (101°-130°) <b>128.7 307.9</b> (181°-019°)	BALTIMORE TOWER <b>119.4 257.8</b>	GND CON <b>121.9</b>	CLNC DEL <b>118.05</b>
------------------------------	---	---------------------------------------	-------------------------	---------------------------



ELEV 143	<b>D</b>	TDZE 138
----------	----------	----------



CATEGORY	A	B	C	D
RNP 0.11 DA		513/38	375 (400-¾)	
RNP 0.30 DA		588/52	450 (500-1)	

## AUTHORIZATION REQUIRED

TDZ/CL Rwy 10 and 33L  
REIL Rwy 15L and 33R  
HIRL all rwy

NE-3, 05 NOV 2020 to 03 DEC 2020

NE-3, 05 NOV 2020 to 03 DEC 2020

# RNAV (RNP) Z RWY 15R