


APP CRS	Rwy Idg	9803
285°	TDZE	143
	Apt Elev	143

RNAV (RNP) Z RWY 28

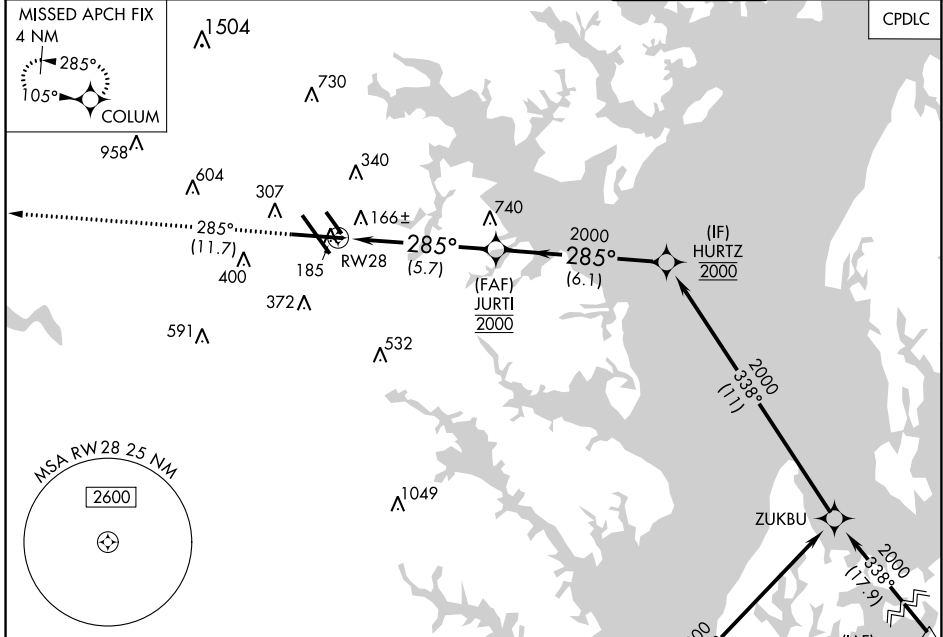
BALTIMORE/WASHINGTON INTL THURGOOD MARSHALL (BWI)

▼ For uncompensated Baro-VNAV systems, procedure NA below -12°C (11°F) or above 54°C (130°F). GPS Required. For inoperative MALSR, increase RNP 0.30 all Cats visibility to 1¼.

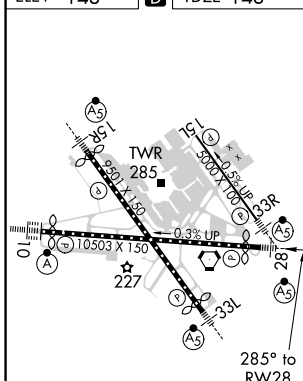
MALSR 

MISSED APPROACH: Climb to 2500 on track 285° to COLUM and hold.

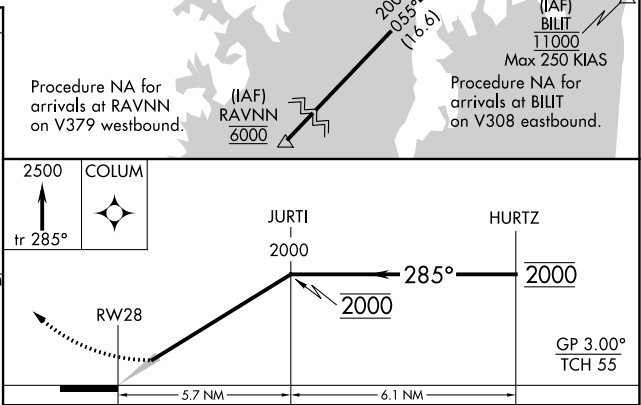
D-ATIS	POTOMAC APP CON	BALTIMORE TOWER	GND CON	CLNC DEL
115.1 127.8	(020°-100°) 119.7 290.475 (131°-180°) (101°-130°) 128.7 307.9 (181°-019°)	119.4 257.8	121.9	118.05



ELEV 143	D	TDZE 143
----------	----------	----------



TDZ/CL Rwy 10 and 33L
REIL Rwy 15L and 33R
HIRL all rwy



CATEGORY	A	B	C	D
RNP 0.30 DA		521/45	378 (400-7%)	

AUTHORIZATION REQUIRED

NE-3, 05 NOV 2020 to 03 DEC 2020

NE-3, 05 NOV 2020 to 03 DEC 2020