

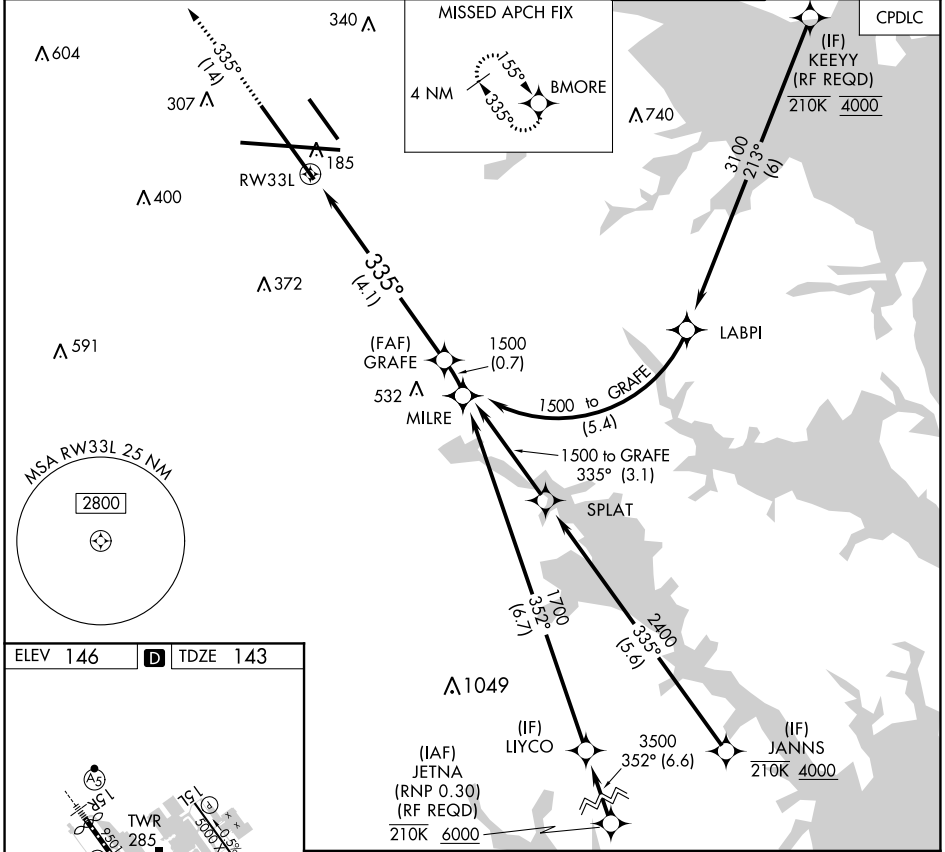
RNAV (RNP) Z RWY 33L

BALTIMORE/WASHINGTON INTL THURGOOD MARSHALL (BWI)

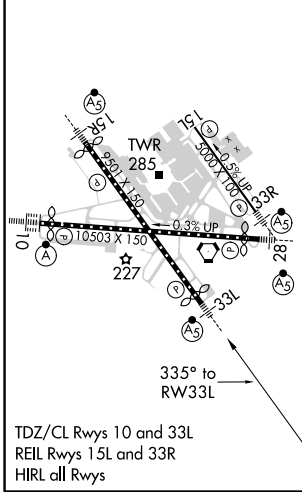
APP CRS 335°	Rwy Idg TDZE Apt Elev	8301 143 146
------------------------	-----------------------------	---

RNP AR APCH.	MALSR	MISSED APPROACH: Climb to 3000 on track 335° to BMORE and hold.
▼ For uncompensated Baro-VNAV systems, procedure NA below -12°C or above 54°C. For inop ALS, increase RNP 0.30 all Cats visibility to RVR 6000.		

D-ATIS 115.1 127.8	POTOMAC APP CON (020°-100°) 119.7 290.475 (131°-180°) (101°-130°) 128.7 307.9 (181°-019°)	BALTIMORE TOWER 119.4 257.8	GND CON 121.9	CLNC DEL 118.05
------------------------------	---	---------------------------------------	-------------------------	---------------------------



ELEV 146	D	TDZE 143
----------	----------	----------



3000	BMORE	GRAFE 1500		
tr 335°				
RW33L 4.1 NM 335° 1500 GP 3.00° TCH 55				
CATEGORY	A	B	C	D
RNP 0.30 DA	496/35 353 (400-5%)			
AUTHORIZATION REQUIRED				

RNAV (RNP) Z RWY 33L

NE-3, 05 NOV 2020 to 03 DEC 2020

NE-3, 05 NOV 2020 to 03 DEC 2020