

# RNAV (GPS) Y RWY 15R

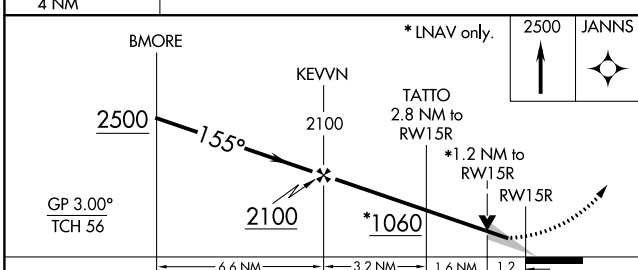
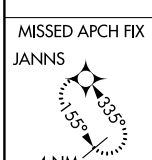
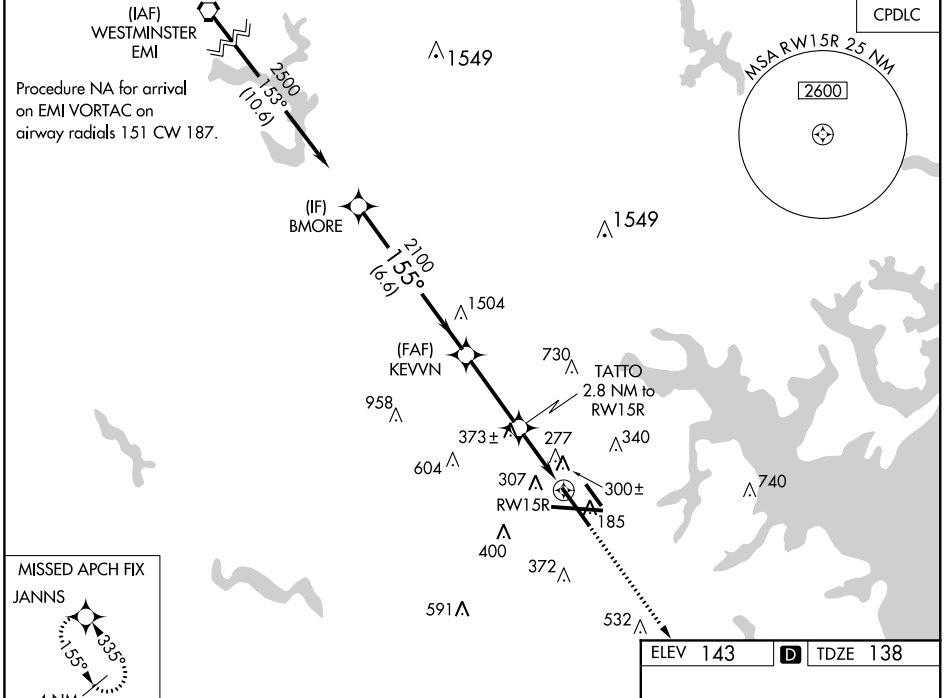
BALTIMORE/WASHINGTON INTL THURGOOD MARSHALL (BWI)

WAAS CH <b>66007</b> <b>W15B</b>	APP CRS <b>155°</b>	Rwy Idg TDZE <b>138</b> Apt Elev <b>143</b>	<b>8301</b>
--	------------------------	---	-------------

**⚠** For uncompensated Baro-VNAV systems, LNAV/VNAV NA below -12°C (11°F) or above 54°C (130°F). For inop MALS/R, increase LNAV/VNAV all Cats visibility to 1 1/2. DME/DME RNP-0.3 NA.  
**\*\*RVR 1800 authorized with use of FD or AP or HUD to DA.**

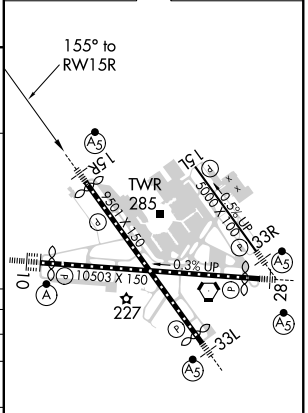
MALS/R 	MISSED APPROACH: Climb to 2500 direct JANNIS and hold.
------------	--

D-ATIS <b>115.1 127.8</b>	POTOMAC APP CON (020°-100°) <b>119.7 290.475</b> (131°-180°) (101°-130°) <b>128.7 307.9</b> (181°-019°)	BALTIMORE TOWER <b>119.4 257.8</b>	GND CON <b>121.9</b>	CLNC DEL <b>118.05</b>
------------------------------	---	---------------------------------------	-------------------------	---------------------------



ELEV 143	<b>D</b> TDZE 138
----------	-------------------

CATEGORY	A	B	C	D
LPV DA	** 338/24		200 (200-1/2)	
LNAV/VNAV DA	557/46		419 (500-1)	
LNAV MDA	560/24	422 (500-1/2)	560/40	422 (500-3/4)
<b>C</b> CIRCLING	640-1 497 (500-1)	660-1 517 (600-1)	700-1 1/2 557 (600-1 1/2)	880-2 1/4 737 (800-2 1/4)



TDZ/CL Rwy 10 and 33L  
 REIL Rwy 15L and 33R  
 HIRL all rwy

# RNAV (GPS) Y RWY 15R

NE-3, 05 NOV 2020 to 03 DEC 2020

NE-3, 05 NOV 2020 to 03 DEC 2020