

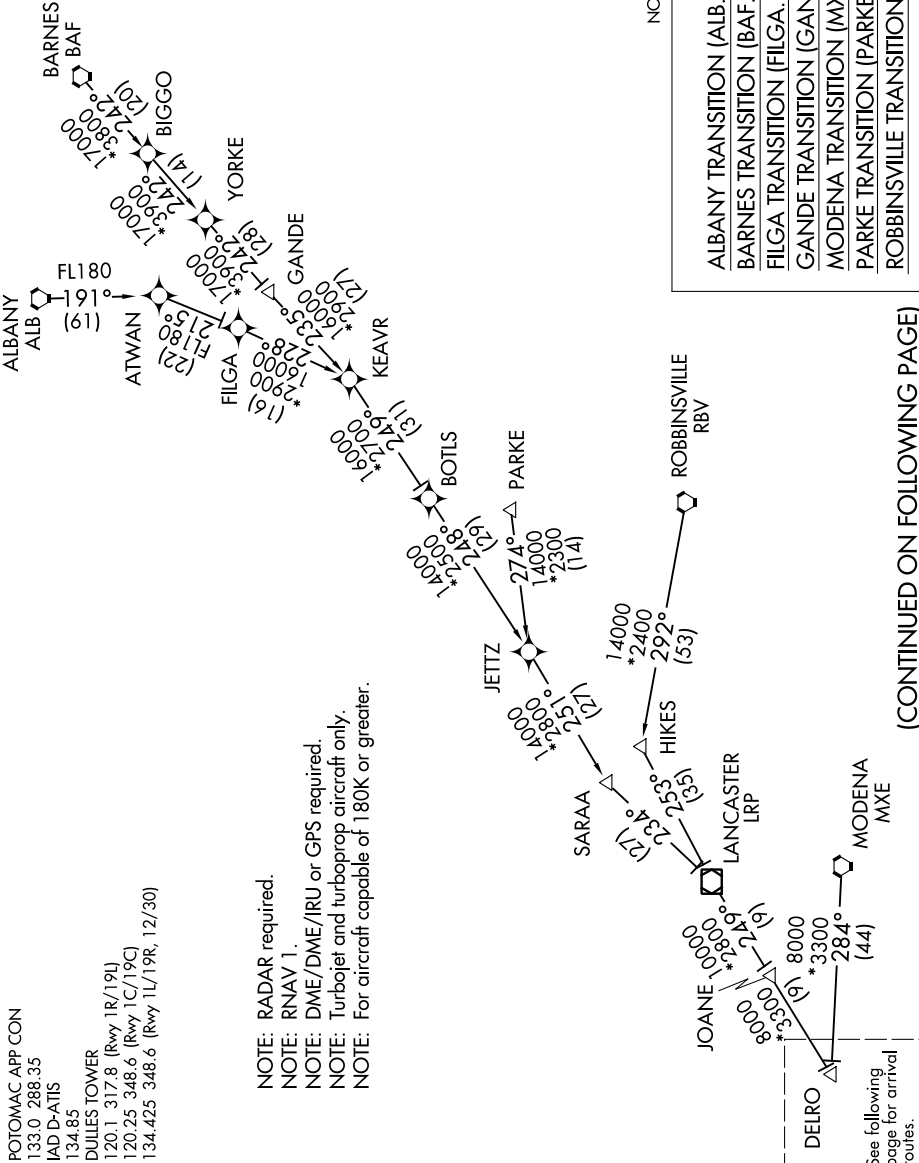
HYPER SEVEN ARRIVAL (RNAV) Transition Routes

WASHINGTON, DC

NE-3, 05 NOV 2020 to 03 DEC 2020

POTOMAC APP CON
 133.0 288.35
 IAD D-ATIS
 134.85
 DULLES TOWER
 120.1 317.8 (Rwy 1R/19L)
 120.25 348.6 (Rwy 1C/19C)
 134.425 348.6 (Rwy 1L/19R, 12/30)

NOTE: RADAR required.
 NOTE: RNAV 1.
 NOTE: DME/DME/IRU or GPS required.
 NOTE: Turbojet and turboprop aircraft only.
 NOTE: For aircraft capable of 180K or greater.



NOTE: Chart not to scale.

- ALBANY TRANSITION (ALB.HYPER7)
- BARNES TRANSITION (BAF.HYPER7)
- FILGA TRANSITION (FILGA.HYPER7)
- GANDE TRANSITION (GANDE.HYPER7)
- MODENA TRANSITION (MXE.HYPER7)
- PARKE TRANSITION (PARKE.HYPER7)
- ROBBINSVILLE TRANSITION (RBV.HYPER7)

(CONTINUED ON FOLLOWING PAGE)

NE-3, 05 NOV 2020 to 03 DEC 2020

HYPER SEVEN ARRIVAL (RNAV) Transition Routes

WASHINGTON, DC

See following
 page for arrival
 routes.