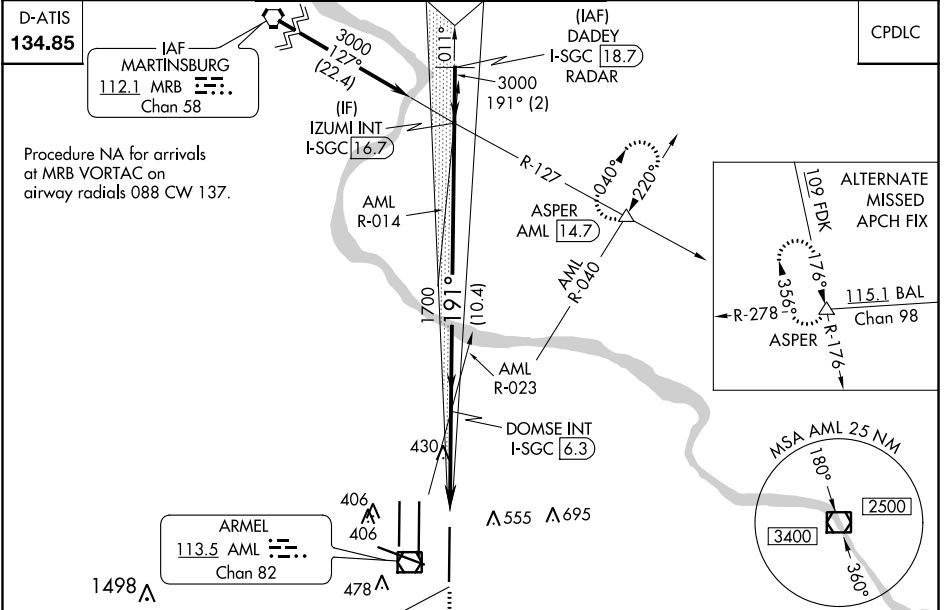


LOC/DME I-SGC <b>110.1</b> Chan <b>38</b>	APP CRS <b>191°</b>	Rwy Idg <b>11500</b> TDZE <b>302</b> Apt Elev <b>313</b>
---	------------------------	--

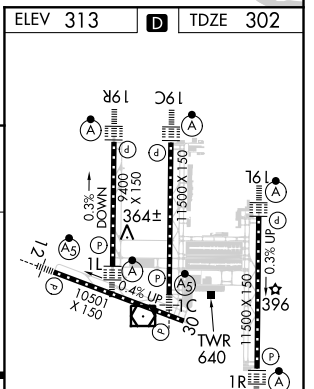
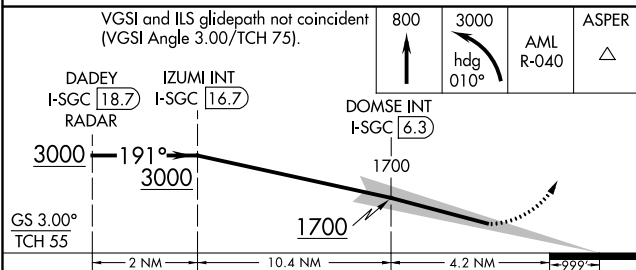
**ILS RWY 19L (SA CAT II)**  
WASHINGTON DULLES INTL (IAD)

	ALS-F-2 	MISSED APPROACH: Climb to 800 then climbing left turn to 3000 on heading 010° and AML VOR/DME R-040 to ASPER INT/AML 14.7 DME and hold.
--	-------------	---

POTOMAC APP CON <b>120.45 306.925</b> (241°-330°) <b>128.525 306.925</b> (091°-240°) <b>126.1 338.25</b> (331°-090°)	DULLES TOWER <b>120.1 317.8</b> (Rwy 1R/19L) <b>120.25 348.6</b> (Rwy 1C/19C) <b>134.425 348.6</b> (Rwys 1L/19R and 12/30)	GND CON <b>121.9 317.8</b> (EAST) <b>121.625 348.6</b> (WEST)	CLNC DEL <b>135.7 317.8</b>
---	---	---	--------------------------------



D-ATIS <b>134.85</b>	ARMEL <b>113.5</b> AML Chan 82	LOCALIZER <b>110.1</b> I-SGC Chan 38
-------------------------	-----------------------------------	---



**CATEGORY II ILS - SPECIAL AIRCREW & AIRCRAFT CERTIFICATION REQUIRED**

TDZ/CL Rwys 1C, 1L, 1R, 12, 19C and 19R  
REIL Rwy 30  
HIRL all Rwys

NE-3, 05 NOV 2020 to 03 DEC 2020

NE-3, 05 NOV 2020 to 03 DEC 2020