

LOC/DME I-HAD <b>110.1</b> Chan 38	APP CRS <b>011°</b>	Rwy ldg <b>11500</b> TDZE <b>312</b> Apt Elev <b>312</b>
--	------------------------	--

# ILS or LOC RWY 1R

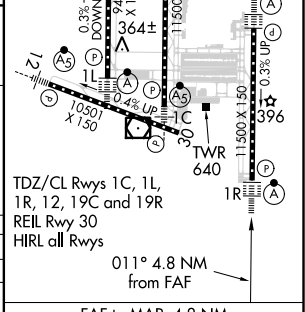
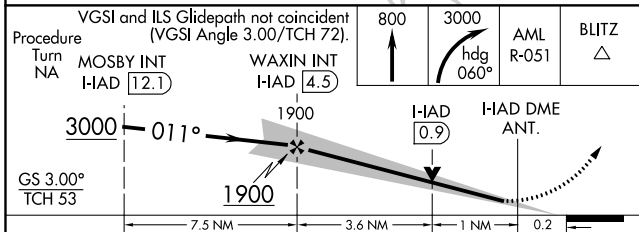
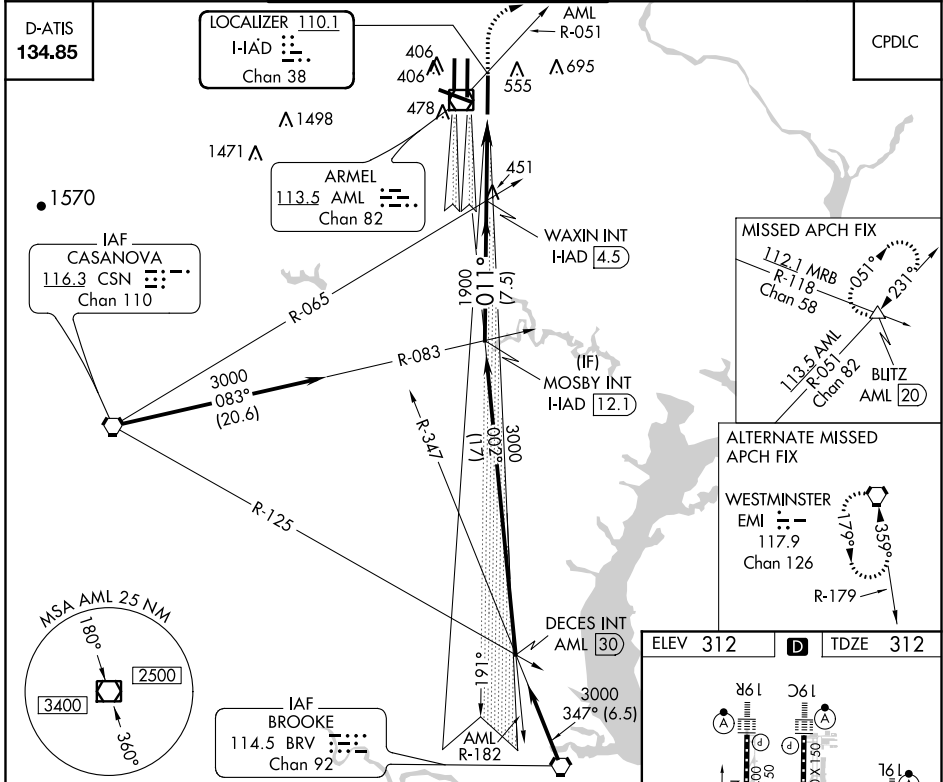
WASHINGTON DULLES INTL (IAD)

**Simultaneous approach authorized with Rwy 1C or 1L.**

**ALSIF-2**

**MISSED APPROACH:** Climb to 800 then climbing right turn to 3000 via heading 060° and AML VOR/DME R-051 to BLITZ INT/AML 20 DME and hold.

POTOMAC APP CON <b>120.45 306.925</b> (241°-330°) <b>128.525 306.925</b> (091°-240°) <b>126.1 338.25</b> (331°-090°)	DULLES TOWER <b>120.1 317.8</b> (Rwy 1R/19L) <b>120.25 348.6</b> (Rwy 1C/19C) <b>134.425 348.6</b> (Rwys 1L/19R and 12/30)	GND CON <b>121.9 317.8</b> (EAST) <b>121.625 348.6</b> (WEST)	CLNC DEL <b>135.7 317.8</b>
---	---	---	--------------------------------



CATEGORY	A	B	C	D
S-ILS 1R	512/18 200 (200-½)			
S-LOC 1R	760/24 448 (500-½)	760/40 448 (500-¾)	760/50 448 (500-1)	
CIRCLING	940-1 628 (700-1)	940-1¾ 628 (700-1¾)	940-2 628 (700-2)	

Knots	60	90	120	150	180
Min:Sec	4:48	3:12	2:24	1:55	1:36

NE-3, 05 NOV 2020 to 03 DEC 2020

NE-3, 05 NOV 2020 to 03 DEC 2020