

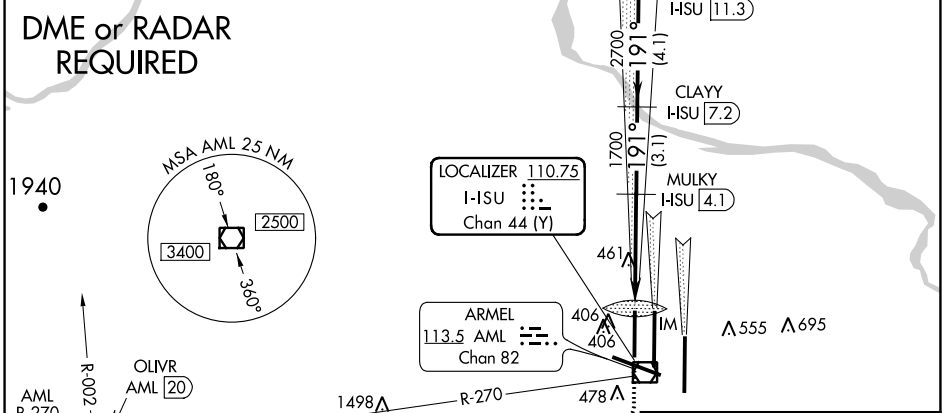
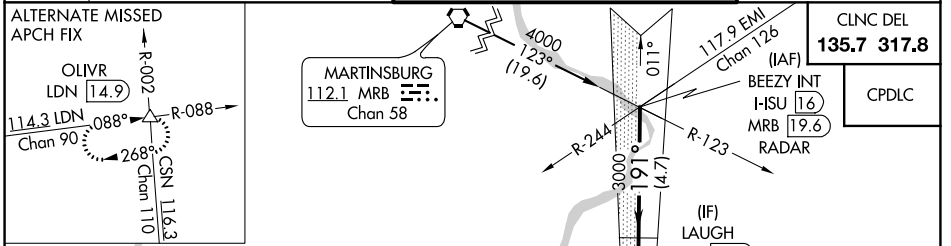
LOC/DME I-HSU 110.75 Chan 44 (Y)	APP CRS 191°	Rwy ldg 9400 TDZE 278 Apt Elev 312
--	------------------------	---

ILS or LOC/DME RWY 19R

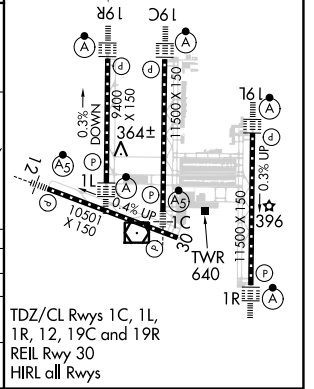
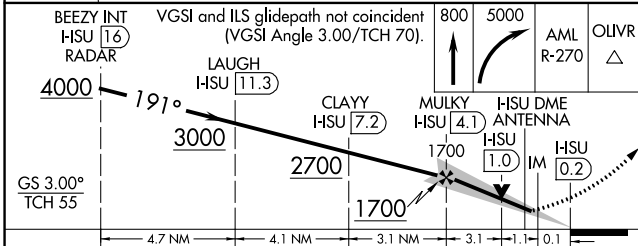
WASHINGTON DULLES INTL (IAD)

Simultaneous approach authorized with ILS or LOC/DME ALSF-2
Rwy 19C, ILS Rwy 19C (Cat II), ILS Rwy 19C (Cat III), Rwy 19L. MISSED APPROACH: Climb to 800 then climbing right turn to 5000 via AML VOR/DME R-270 to OLIVR INT/AML 20 DME and hold, continue climb-in-hold to 5000.

D-ATIS 134.85	POTOMAC APP CON 120.45 306.925 (241°-330°) 128.525 306.925 (091°-240°) 126.1 338.25 (331°-090°)	DULLES TOWER 120.1 317.8 (Rwy 1R/19L) 120.25 348.6 (Rwy 1C/19C) 134.425 348.6 (Rwys 1L/19R and 12/30)	GND CON 121.9 317.8 (EAST) 121.625 348.6 (WEST)
-------------------------	---	---	---



ELEV 312	D	TDZE 278
----------	----------	----------



CATEGORY	A	B	C	D
S-ILS 19R	478/18 200 (200-½)			
S-LOC 19R	720/24 442 (500-½)	720/40 442 (500-¾)	720/50 442 (500-1)	
CIRCLING	940-1 628 (700-1)	940-1¾ 628 (700-1¾)	940-2 628 (700-2)	

TDZ/CL Rwys 1C, 1L, 1R, 12, 19C and 19R
 REIL Rwy 30
 HIRL all Rwys

NE-3, 05 NOV 2020 to 03 DEC 2020

NE-3, 05 NOV 2020 to 03 DEC 2020