

# JDUBB THREE DEPARTURE (RNAV)

D-ATIS  
 134.85  
 CLNC DEL  
 135.7 317.8  
 CPDLC  
 GND CON  
 121.9 317.8 (EAST)  
 121.625 348.6 (WEST)  
 DULLES TOWER  
 120.1 317.8 (Rwy 1R/19L)  
 120.25 348.6 (Rwy 1C/19C)  
 134.425 348.6 (Rwys 1L/19R, 12/30)  
 POTOMAC DEP CON  
 126.65 350.2

**TOP ALTITUDE:  
3000**



### TAKEOFF MINIMUMS:

Rwys 1L/C/R, 19L/C/R, 30:  
 Standard with minimum climb  
 of 500' per NM to 820.

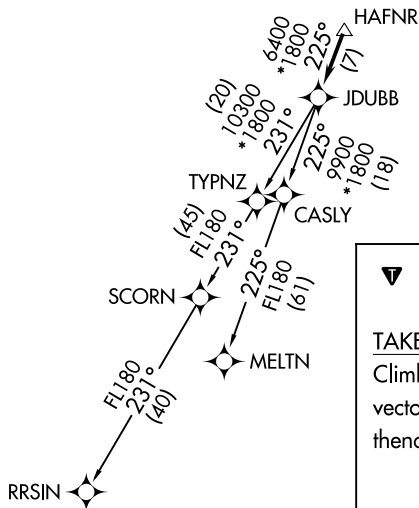
NOTE: RNAV 1.

NOTE: RADAR required.

NOTE: DME/DME/IRU or GPS required.

NE-3, 05 NOV 2020 to 03 DEC 2020

NE-3, 05 NOV 2020 to 03 DEC 2020



NOTE: Chart not to scale.

### ▼ DEPARTURE ROUTE DESCRIPTION

TAKEOFF RWY 1L, 1C, 1R, 19C, 19L, 19R, 30:  
 Climb on heading assigned by ATC, expect RADAR  
 vectors to HAFNR, then on track 225° to JDUBB,  
 thence. . . .

. . . .on assigned transition. Maintain 3000. Expect  
 clearance to filed altitude within ten (10) minutes  
 after departure.

MELTN TRANSITION (JDUBB3.MELTN)

RRSIN TRANSITION (JDUBB3.RRSIN)