

WAAS CH 86310 W12A	APP CRS 121°	Rwy Idg 10501 TDZE 310 Apt Elev 312
---------------------------------	------------------------	--

RNAV (GPS) RWY 12

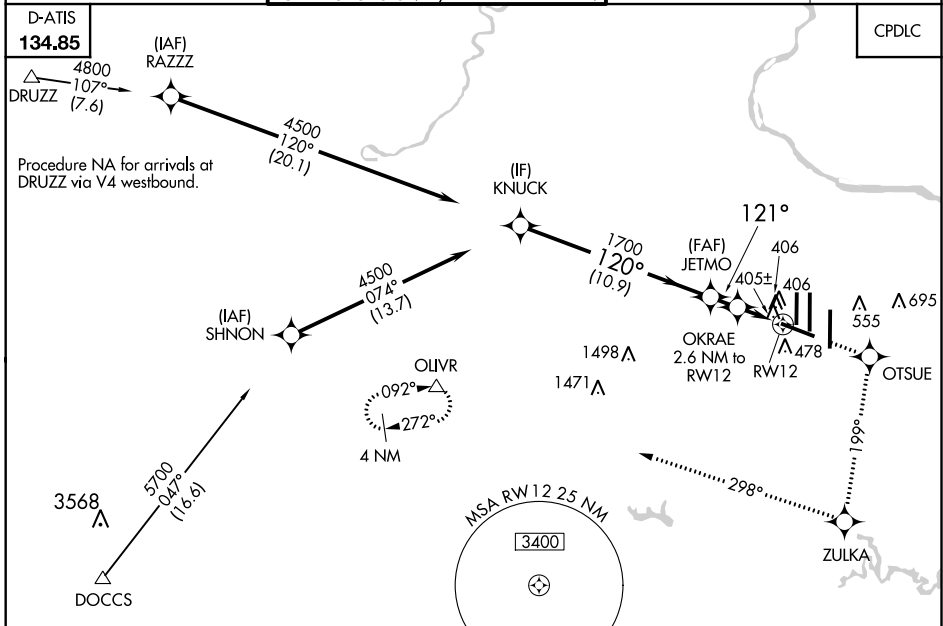
WASHINGTON DULLES INTL (IAD)

▼ For inoperative MALS, increase LNAV Cat D visibility to RVR 6000.
For uncompensated Baro-VNAV systems, LNAV/VNAV NA below -15°C (5°F) or above 48°C (118°F). DME/DME RNP-0.3 NA.

MALS

MISSED APPROACH: Climb to 4000 direct OTSUE and via 199° track to ZULKA and right turn via 298° track to OLIVR and hold.

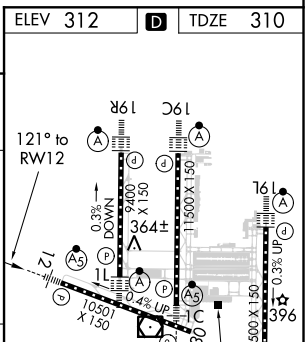
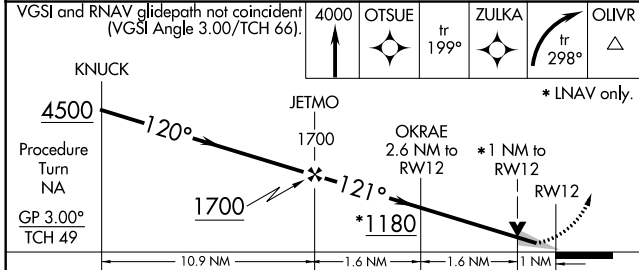
POTOMAC APP CON 120.45 306.925 (241°-330°) 128.525 306.925 (091°-240°) 126.1 338.25 (331°-090°)	DULLES TOWER 120.1 317.8 (Rwy 1R/19L) 120.25 348.6 (Rwy 1C/19C) 134.425 348.6 (Rwys 1L/19R and 12/30)	GND CON 121.9 317.8 (EAST) 121.625 348.6 (WEST)	CLNC DEL 135.7 317.8
---	---	---	--------------------------------



NE-3, 05 NOV 2020 to 03 DEC 2020

NE-3, 05 NOV 2020 to 03 DEC 2020

ELEV 312	D	TDZE 310
----------	----------	----------



CATEGORY	A	B	C	D
LPV DA		510/18	200 (200-½)	
LNAV/VNAV DA		737/50	427 (500-1)	
LNAV MDA		680/24	370 (400-½)	680/50 370 (400-1)
CIRCLING	940-1	628 (700-1)	940-1¾ 628 (700-1¾)	940-2 628 (700-2)

TDZ/CL Rwys 1C, 1L, 1R, 12, 19C and 19R
REL Rwy 30
HIRL all Rwys