

RNAV (RNP) Z RWY 19C

WASHINGTON DULLES INTL (IAD)

APP CRS	Rwy ldg	11089
191°	TDZE	272
	Apt Elev	312

GPS required. For uncompensated Baro-VNAV systems, procedure NA below -14°C (6°F) or above 47°C (117°F). For inoperative ALSF, increase RNP 0.30 visibility to 1 3/4. Simultaneous approach authorized with ILS or LOC Rwy 19L, ILS Rwy 19L (Cat II). Use of FD or AP providing RNAV track guidance required during simultaneous operations.

ALSF-2



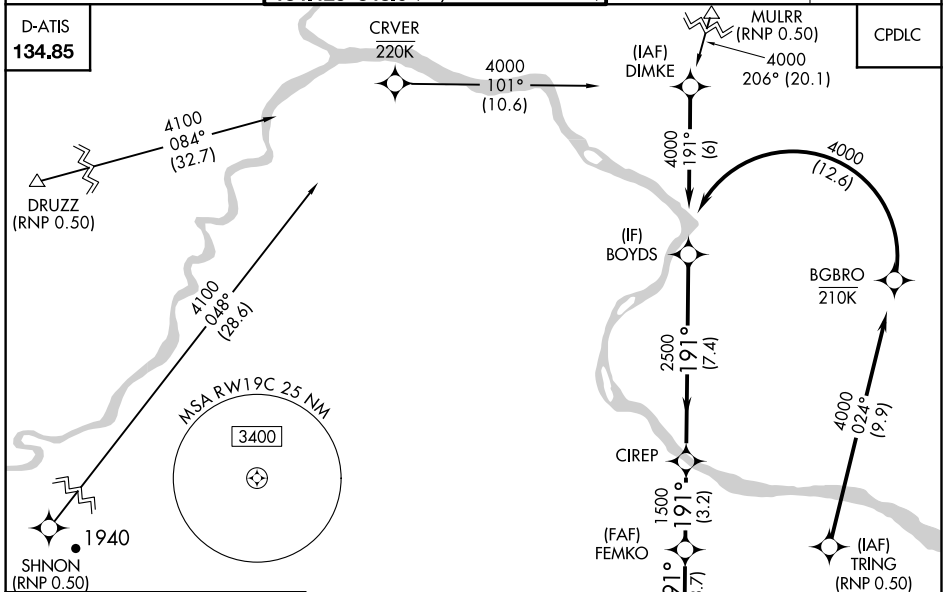
MISSED APPROACH: Climb to 4000 via track 191° to BOPAC and via track 265° to BLUES and hold.

POTOMAC APP CON	
120.45	306.925 (241°-330°)
128.525	306.925 (091°-240°)
126.1	338.25 (331°-090°)

DULLES TOWER	
120.1	317.8 (Rwys 1R/19L)
120.25	348.6 (Rwy 1C/19C)
134.425	348.6 (Rwys 1L/19R and 12/30)

GND CON	
121.9	317.8 (EAST)
121.625	348.6 (WEST)

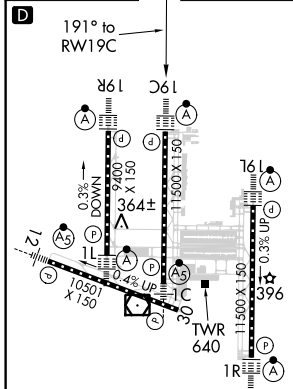
CLNC DEL	
135.7	317.8



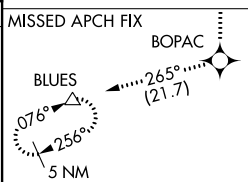
NE-3, 05 NOV 2020 to 03 DEC 2020

NE-3, 05 NOV 2020 to 03 DEC 2020

ELEV 312	TDZE 272
----------	----------



TDZ/CL 1C, 1L, 1R, 12, 19C and 19R
REIL Rwy 30
HIRL all Rwys



4000	tr 191°	BOPAC	tr 265°	BLUES	BOYDS	Procedure Turn NA
VGSi and RNAV glidepath not coincident (VGSi Angle 3.00/TCH 72).				FEMKO	CIREP	
RWY 19C		1500	2500	4000	GP 3.00° TCH 54	
3.7 NM		3.2 NM		7.4 NM		
CATEGORY	A	B	C	D		
RNP 0.30 DA	740/60		468 (500-1 1/4)			

AUTHORIZATION REQUIRED