


APP CRS	Rwy Idg	11500
011°	TDZE	286
	Apt Elev	312

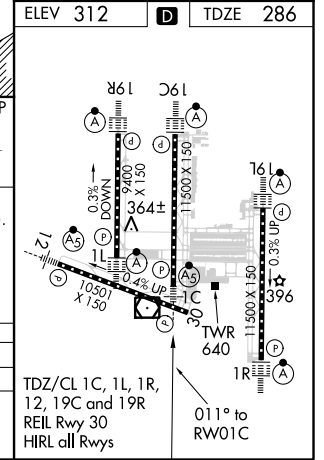
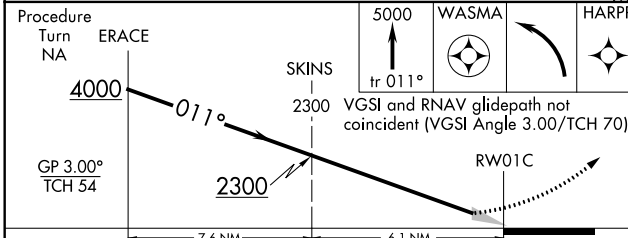
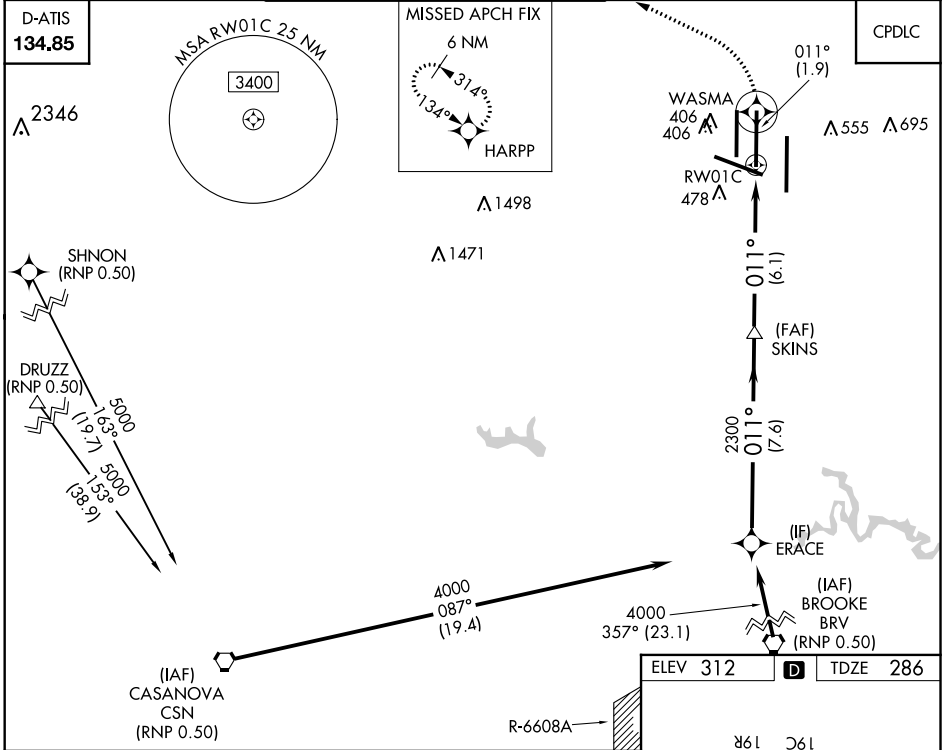
RNAV (RNP) Z RWY 1C

WASHINGTON DULLES INTL (IAD)

▼ For uncompensated Baro-VNAV systems, procedure NA below -1.4°C (6°F) or above 48°C (119°F). For inoperative ALSF-2, increase RNP 0.30 visibility to 1¼. GPS required. Simultaneous approach authorized with ILS or LOC Rwy 1R, ILS Rwy 1R (Cat II), ILS Rwy 1R (Cat III). Use of FD or AP providing RNAV track guidance required during simultaneous operations.

MALSR  MISSED APPROACH: Climb to 5000 on track 011° to WASMA and left turn direct HARPP and hold.

POTOMAC APP CON 120.45 306.925 (241°-330°) 128.525 306.925 (091°-240°) 126.1 338.25 (331°-090°)	DULLES TOWER 120.1 317.8 (Rwy 1R/19L) 120.25 348.6 (Rwy 1C/19C) 134.425 348.6 (Rwys 1L/19R and 12/30)	GND CON 121.9 317.8 (EAST) 121.625 348.6 (WEST)	CLNC DEL 135.7 317.8
---	---	---	--------------------------------



CATEGORY	A	B	C	D
RNP 0.30 DA	817-1½ 531 (600-1½)			

AUTHORIZATION REQUIRED

TDZ/CL 1C, 1L, 1R, 12, 19C and 19R
REIL Rwy 30
HIRL all Rwys

011° to RWY 1C

NE-3, 05 NOV 2020 to 03 DEC 2020

NE-3, 05 NOV 2020 to 03 DEC 2020