

WAAS CH <b>58105</b> <b>W19A</b>	APP CRS <b>191°</b>	Rwy Idg <b>11500</b> TDZE <b>302</b> Apt Elev <b>312</b>
--	------------------------	--

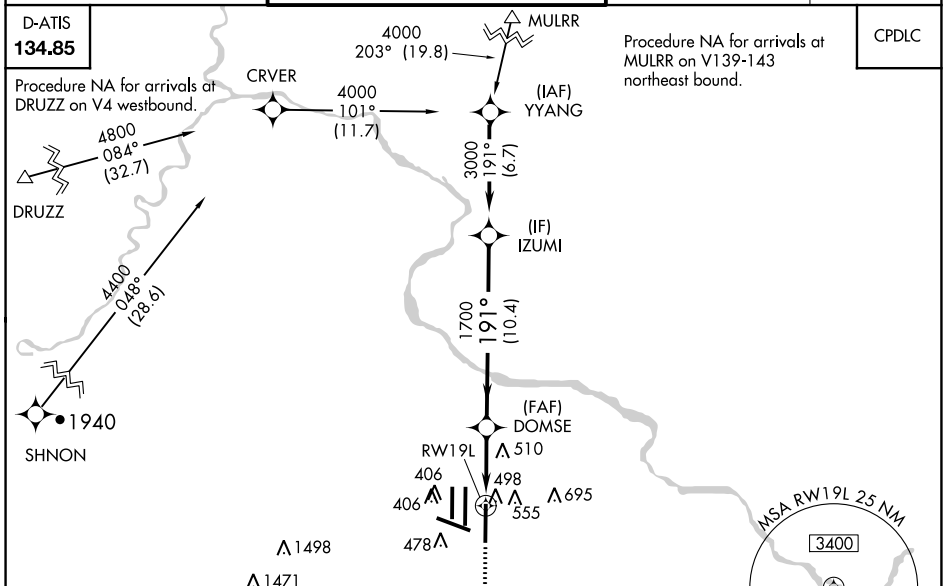
# RNAV (GPS) Y RWY 19L

WASHINGTON DULLES INTL (IAD)

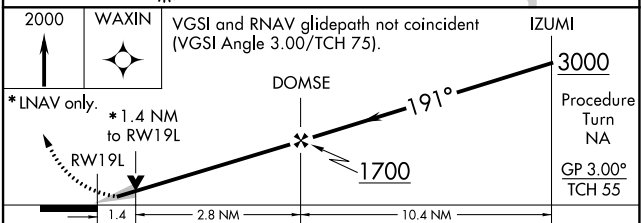
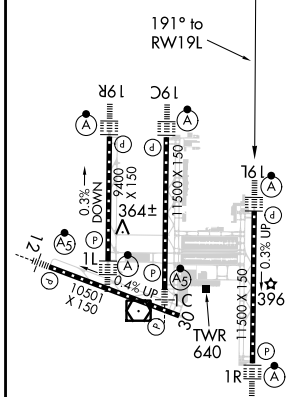
▼ For uncompensated Baro-VNAV systems, LNAV/VNAV NA below -15°C (5°F) or above 48°C (118°F). DME/DME RNP-0.3 NA. Simultaneous approach authorized with ILS or LOC/DME Rwy 19R, ILS Rwy 19R (Cat II), ILS Rwy 19R (Cat III). LNAV procedure NA during simultaneous operations. Use of FD or AP providing RNAV track guidance required during simultaneous operations. \*\*RVR 1800 authorized with use of FD or AP or HUD to DA.

ALSF-2 	MISSED APPROACH: Climb to 2000 direct WAXIN and hold.
------------	--

POTOMAC APP CON <b>120.45 306.925</b> (241°-330°) <b>128.525 306.925</b> (091°-240°) <b>126.1 338.25</b> (331°-090°)	DULLES TOWER <b>120.1 317.8</b> (Rwy 1R/19L) <b>120.25 348.6</b> (Rwy 1C/19C) <b>134.425 348.6</b> (Rwys 1L/19R and 12/30)	GND CON <b>121.9 317.8</b> (EAST) <b>121.625 348.6</b> (WEST)	CLNC DEL <b>135.7 317.8</b>
---	---	---	--------------------------------



ELEV <b>312</b>	<b>D</b>	TDZE <b>302</b>
-----------------	----------	-----------------



CATEGORY	A	B	C	D
LPV DA**	502/24 200 (200-½)			
LNAV/VNAV DA	829/60 527 (600-1¼)			
LNAV MDA	820/24	518 (600-½)	820/50 518 (600-1)	820/60 518 (600-1¼)
CIRCLING	940-1	628 (700-1)	940-1¾ 628 (700-1¾)	940-2 628 (700-2)

NE-3, 05 NOV 2020 TO 03 DEC 2020

NE-3, 05 NOV 2020 TO 03 DEC 2020