

WAAS CH 56409 W01A	APP CRS 011°	Rwy Idg 11500 TDZE 312 Apt Elev 312
---------------------------------	------------------------	--

RNAV (GPS) Y RWY 1R

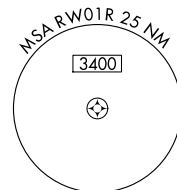
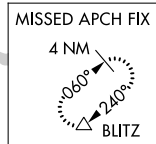
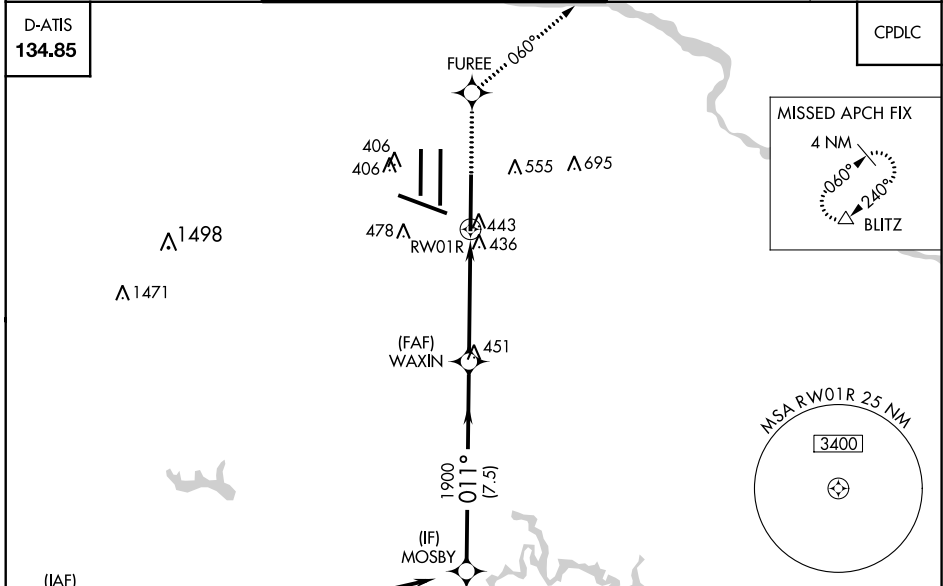
WASHINGTON DULLES INTL (IAD)

▼ For uncompensated Baro-VNAV systems, LNAV/VNAV NA below -15°C (5°F) or above 48°C (118°F). DME/DME RNP-0.3 NA. Simultaneous approach authorized with ILS or LOC/DME Rwy 1L, ILS Rwy 1L (Cat II), ILS Rwy 1L (Cat III). LNAV procedure NA during simultaneous operations. Use of FD or AP providing RNAV track guidance required during simultaneous operations.

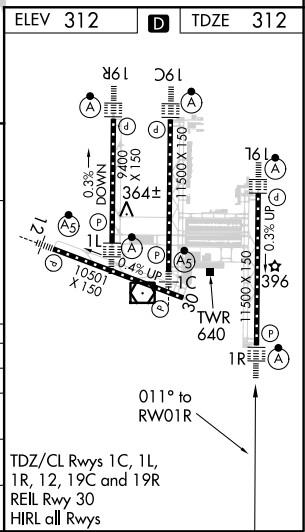
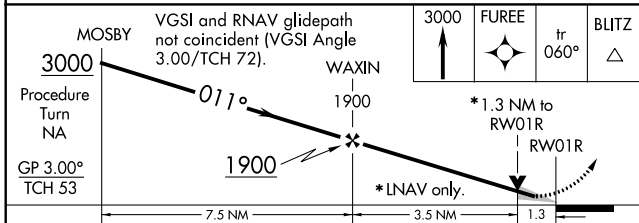


MISSED APPROACH:
Climb to 3000 direct FUREE and on 060° track to BLITZ and hold.

POTOMAC APP CON 120.45 306.925 (241°-330°) 128.525 306.925 (091°-240°) 126.1 338.25 (331°-090°)	DULLES TOWER 120.1 317.8 (Rwys 1R/19L) 120.25 348.6 (Rwy 1C/19C) 134.425 348.6 (Rwys 1L/19R and 12/30)	GND CON 121.9 317.8 (EAST) 121.625 348.6 (WEST)	CLNC DEL 135.7 317.8
---	--	---	--------------------------------



ELEV 312	D	TDZE 312
----------	----------	----------



CATEGORY	A	B	C	D
LPV DA		512/18	200 (200-1/2)	
LNAV/VNAV DA		764/50	452 (500-1)	
LNAV MDA	800/24	488 (500-1/2)	800/40 488 (500-3/4)	800/50 488 (500-1)
CIRCLING	940-1	628 (700-1)	940-1 3/4 628 (700-1 3/4)	940-2 628 (700-2)

NE-3, 05 NOV 2020 to 03 DEC 2020

NE-3, 05 NOV 2020 to 03 DEC 2020