

# WOOLY ONE DEPARTURE (RNAV)

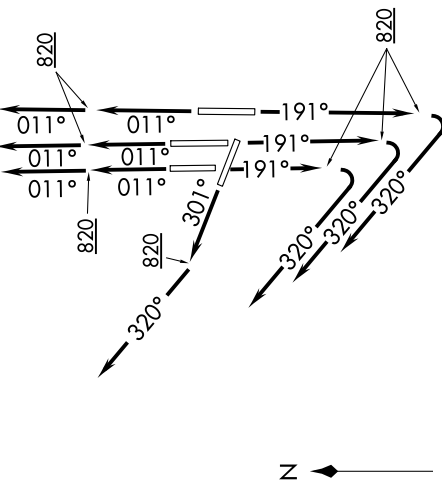
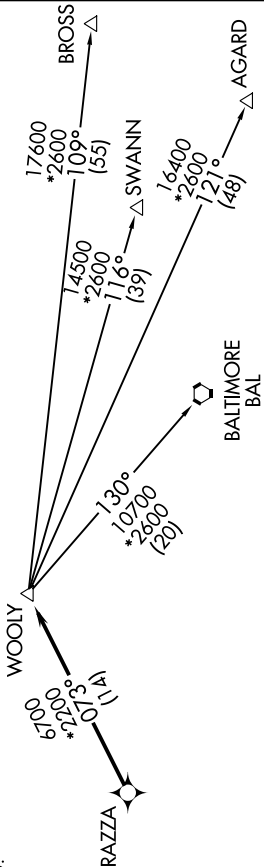
NE-3, 05 NOV 2020 to 03 DEC 2020

D-ATIS 134.85  
 CLNC DEL 135.7 317.8  
 CPDLC  
 GND CON  
 121.9 317.8 (EAST)  
 121.625 348.6 (WEST)  
 DULLES TOWER  
 120.1 317.8 (Rwy 1R/19L)  
 120.25 348.6 (Rwy 1C/19C)  
 134.425 348.6 (Rwys 1L/19R, 12/30)  
 POTOMAC DEP CON  
 125.05 350.2

**TAKEOFF MINIMUMS:**  
 Rwys 1L/C/R, 19L/C/R, 30:  
 Standard with minimum climb  
 of 500' per NM to 820.

NOTE: RNAV 1.  
 NOTE: DME/DME/IRU or GPS required.  
 NOTE: RADAR required.  
 NOTE: Turbojets only.

**TOP ALTITUDE:  
3000**



NOTE: Chart not to scale.

## DEPARTURE ROUTE DESCRIPTION

**TAKEOFF RUNWAYS 1L/C/R:** Climb heading 011° to 820, then on heading 011° or as assigned by ATC, expect RADAR vectors to RAZZA, thence . . . .  
**TAKEOFF RUNWAYS 19L/C/R:** Climb heading 191° to 820, then on heading 320° or as assigned by ATC, expect RADAR vectors to RAZZA, thence . . . .  
**TAKEOFF RUNWAY 30:** Climb heading 301° to 820, then on heading 320° or as assigned by ATC, expect RADAR vectors to RAZZA, thence . . . .  
 . . . . on track 073° to WOOLY, then on assigned transition. Maintain 3000. Expect clearance to filed altitude within ten (10) minutes after departure.

AGARD TRANSITION (WOOLY1.AGARD)  
 BALTIMORE TRANSITION (WOOLY1.BAL)  
 BROSS TRANSITION (WOOLY1.BROSS)  
 SWANN TRANSITION (WOOLY1.SWANN)

NE-3, 05 NOV 2020 to 03 DEC 2020