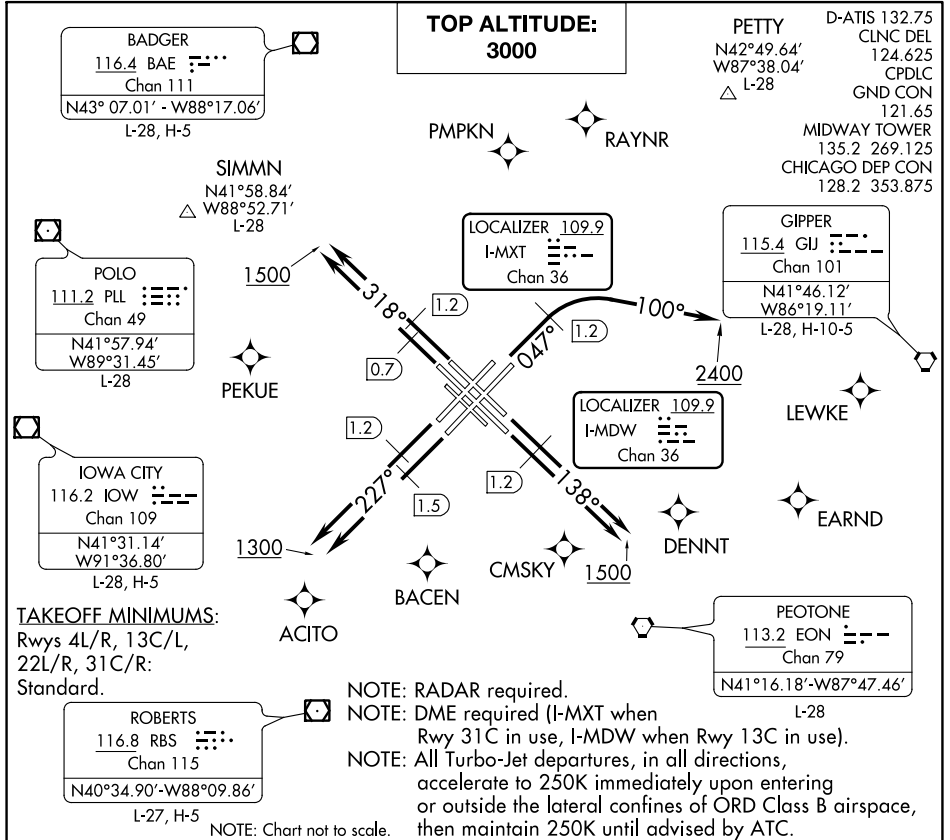


CICERO TWO DEPARTURE

AL-81 (FAA)

CHICAGO MIDWAY INTL (MDW)
CHICAGO, ILLINOIS



TAKEOFF MINIMUMS:
 Rwy 4L/R, 13C/L,
 22L/R, 31C/R:
 Standard.

NOTE: Chart not to scale.

DEPARTURE ROUTE DESCRIPTION

- TAKEOFF RUNWAYS 4L/R:** Assigned headings 360° (CW) thru 080° climb heading 047° to 1.2 DME, then continue climbing right turn heading 100° to 2400, thence . . .
 - TAKEOFF RUNWAYS 13C/L:** Climb heading 138° to 1.2 DME, then continue climb to 1500, thence . . .
 - TAKEOFF RUNWAY 22L:** Climb heading 227° to 1.5 DME, then continue climb to 1300, thence . . .
 - TAKEOFF RUNWAY 22R:** Climb heading 227° to 1.2 DME, then continue climb to 1300, thence . . .
 - TAKEOFF RUNWAY 31C:** Climb heading 318° to 0.7 DME, then continue climb to 1500, thence . . .
 - TAKEOFF RUNWAY 31R:** Climb heading 318° to 1.2 DME, then continue climb to 1500, thence . . .
- ALL AIRCRAFT:** Expect RADAR vectors to first enroute fix. Maintain 3000 or assigned lower altitude. Expect clearance to requested altitude/flight level 10 (ten) minutes after departure. Complete initially assigned turn within 4 DME.
 . . . on tower assigned heading/vector to assigned altitude.

CICERO TWO DEPARTURE

CHICAGO, ILLINOIS
CHICAGO MIDWAY INTL (MDW)

EC-3, 31 DEC 2020 to 28 JAN 2021

EC-3, 31 DEC 2020 to 28 JAN 2021