

LOC/DME I-HKH <b>111.5</b> Chan <b>52</b>	APP CRS <b>047°</b>	Rwy Idg TDZE <b>619</b> Apt Elev <b>620</b>
---	------------------------	---

# ILS or LOC RWY 4R

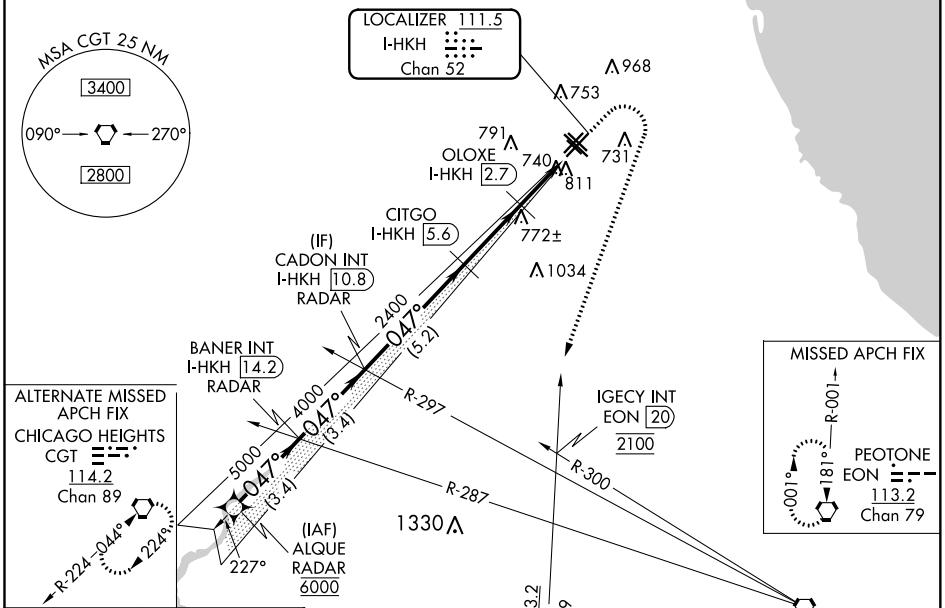
CHICAGO MIDWAY INTL (MDW)

RNAV 1-GPS or RADAR required for procedure entry.  
DME required for LOC only.

- ▼ Circling Rwy 31R NA at night.
- ▲ Rwy 4R helicopter visibility reduction below RVR 4000 NA.

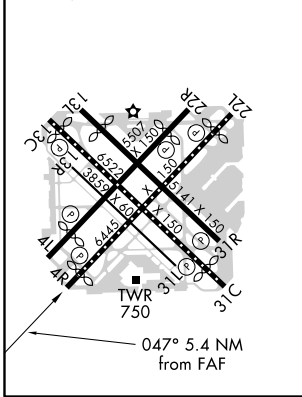
MISSED APPROACH: Climb to 1100 then climbing right turn to 2100 on heading 230° and on EON VORTAC R-001 until crossing IGCEY INT/EON 20 DME, then climb to 2600 to EON VORTAC and hold.

D-ATIS <b>132.75</b>	CHICAGO APP CON <b>128.2 353.875</b>	MIDWAY TOWER <b>135.2 269.125</b>	GND CON <b>121.65</b>	CLNC DEL <b>124.625</b>	CPDLC
-------------------------	---	--------------------------------------	--------------------------	----------------------------	-------



ELEV 620 **D** TDZE 619

HIRL Rws 13C-31C and 4R-22L  
MIRL Rws 4L-22R, 13L-31R, and 13R-31L  
REIL Rws 4R, 22L, and 31C  
RLS Rws 13C and 31C



VGSI and ILS glidepath not coincident (VGSI Angle 3.00/TCH 66).			
ALQUE RADAR	BANER INT I-HKH (14.2) RADAR	CADON INT I-HKH (10.8) RADAR	CITGO I-HKH (5.6) OLOXE I-HKH (2.7) IGCEY INT
6000	5000	4000	2400
GS 3.00° TCH 50	0.47°	2400	*1460
3.4 NM	3.4 NM	5.2 NM	2.9 NM
CATEGORY	A	B	C
S-ILS 4R	869/40	250 (300-¾)	869/50
S-LOC 4R	1000/55	381 (400-1)	1000/60
CIRCLING	1120-1	500 (500-1)	1340-2 720 (800-2)
			1340-2¼ 720 (800-2¼)

EC-3, 31 DEC 2020 to 28 JAN 2021

EC-3, 31 DEC 2020 to 28 JAN 2021