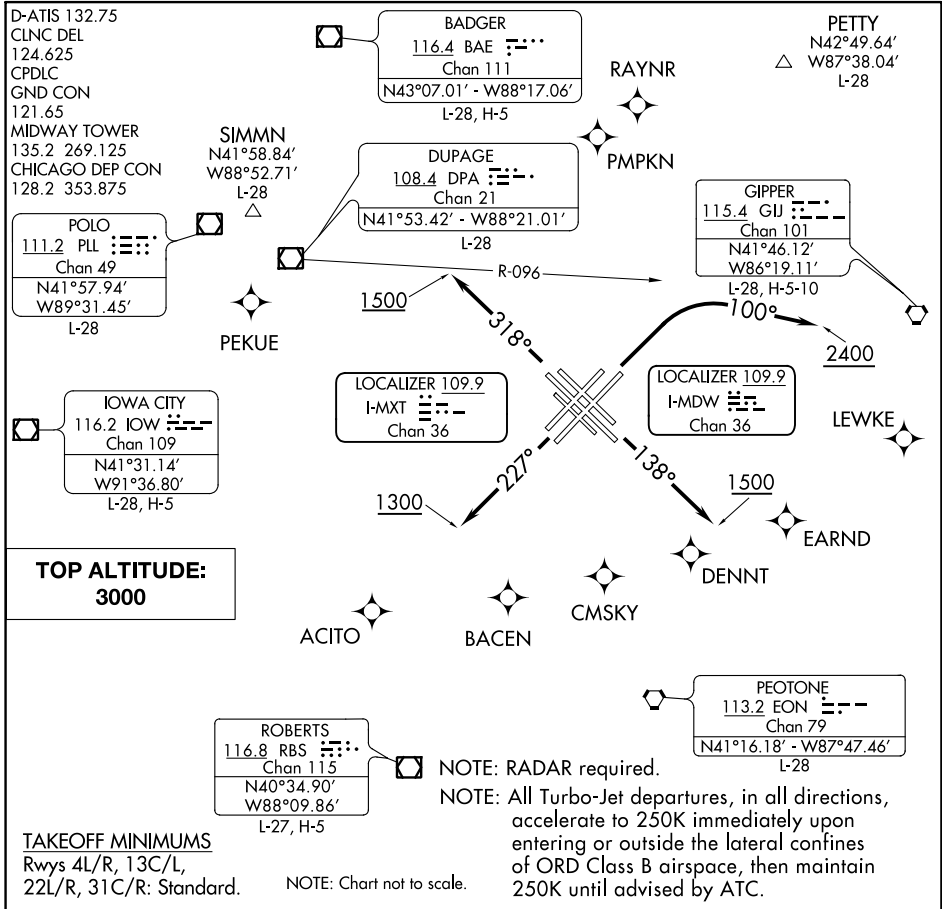


MIDWAY FIVE DEPARTURE

AL-81 (FAA)

CHICAGO MIDWAY INTL (MDW)
CHICAGO, ILLINOIS



DEPARTURE ROUTE DESCRIPTION

ALL AIRCRAFT:

- TAKEOFF RUNWAYS 4L/R:** Assigned headings 360° (CW) through 080°, climbing right turn to 2400 heading 100° before proceeding on course, thence. . . .
- TAKEOFF RUNWAYS 13C/13L:** Climb heading 138° to 1500 before turning, thence. . . .
- TAKEOFF RUNWAYS 22L/22R:** Climb heading 227° to 1300 before turning, thence. . . .
- TAKEOFF RUNWAYS 31C/31R:** Climb heading 318° to 1500 before turning, thence. . . .

DME EQUIPPED AIRCRAFT: Complete initially assigned turn within 4 DME (I-MXT when Rwy 31C in use, I-MDW when Rwy 13C in use). Maintain 3000 or assigned lower altitude, thence. . . .

NON-DME EQUIPPED AIRCRAFT: Complete initially assigned turn south of DPA R-096, maintain 3000 or assigned lower altitude, thence. . . .

. . . .expect RADAR vectors to first enroute fix. Expect clearance to requested altitude/flight level 10 (ten) minutes after departure.

MIDWAY FIVE DEPARTURE