

APP CRS	Rwy Idg	<b>6059</b>
<b>138°</b>	TDZE	<b>611</b>
	Apt Elev	<b>620</b>

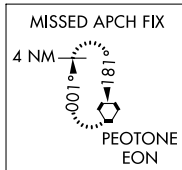
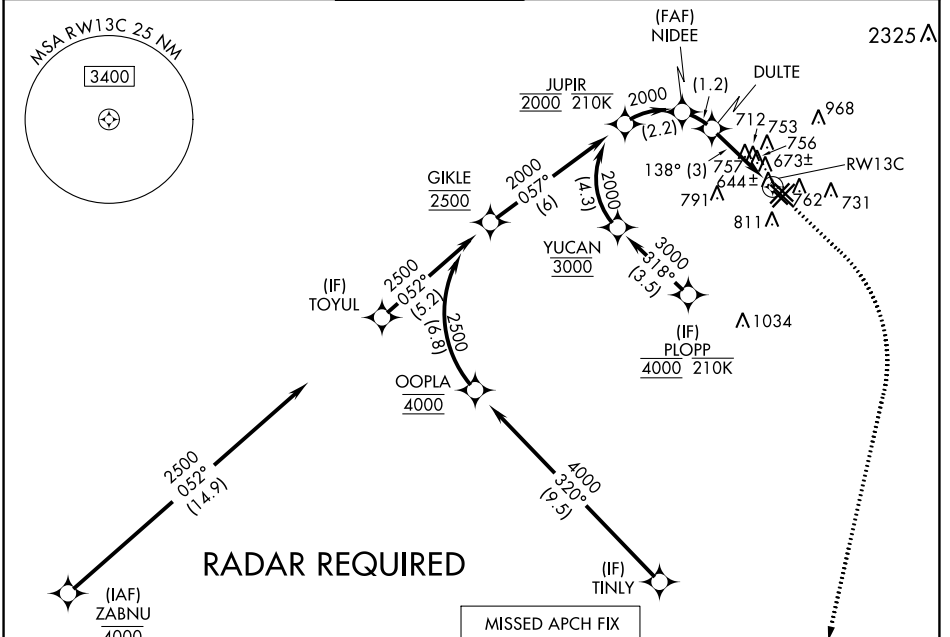
# RNAV (RNP) Y RWY 13C

CHICAGO MIDWAY INTL (MDW)

For uncompensated Baro-VNAV systems, procedure NA below -19°C (-2°F) or above 54°C (130°F). RF required. GPS required. Night landing: Rwy 13C Cat C and D operational VGSi required, remain on or above VGSi glidepath until threshold.

MISSED APPROACH: Climb to 1100 then climbing right turn to 2600 direct EON VORTAC and hold.

D-ATIS	CHICAGO APP CON	MIDWAY TOWER	GND CON	CLNC DEL	CPDLC
<b>132.75</b>	<b>128.2 353.875</b>	<b>135.2 269.125</b>	<b>121.65</b>	<b>124.625</b>	



ELEV 620	<b>D</b>	TDZE 611
----------	----------	----------

