

WAAS CH <b>50541</b> <b>W13A</b>	APP CRS <b>138°</b>	Rwy Idg TDZE Apt Elev	<b>6059</b> <b>611</b> <b>620</b>
--	------------------------	-----------------------------	---

# RNAV (GPS) Z RWY 13C

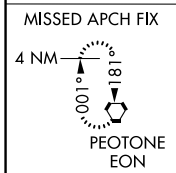
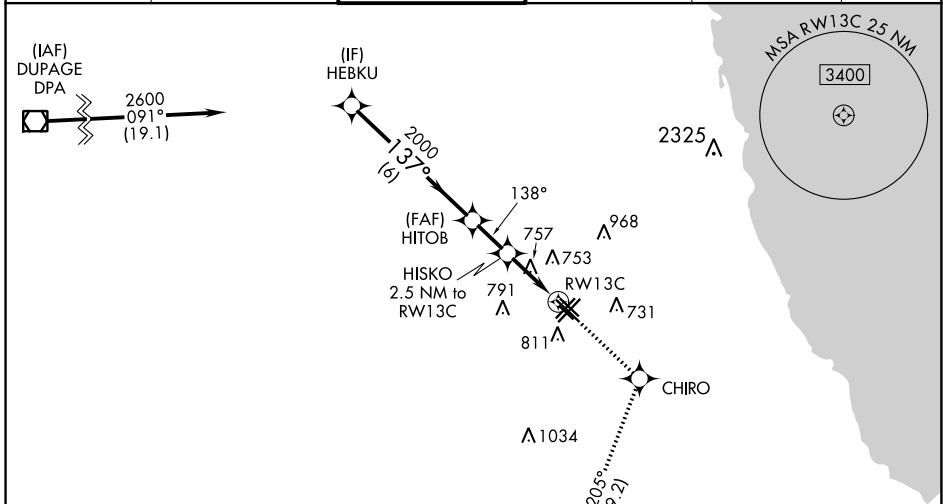
CHICAGO MIDWAY INTL (MDW)

RNP APCH.

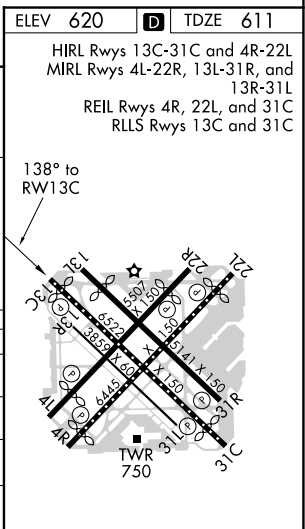
⚠ Circling to Rwy 31R NA at night. For uncompensated Baro-VNAV systems, LNAV/VNAV NA below -19°C or above 54°C.  
Rwy 13C helicopter visibility reduction below RVR 4000 NA.

MISSED APPROACH: Climb to 2300 direct CHIRO and on track 205° to IGENCY then climb to 2600 on track 187° to EON VORTAC and hold.

D-ATIS <b>132.75</b>	CHICAGO APP CON <b>128.2 388.0</b>	MIDWAY TOWER <b>135.2 269.125</b>	GND CON <b>121.65</b>	CLNC DEL <b>124.625</b>	CPDLC
-------------------------	---------------------------------------	--------------------------------------	--------------------------	----------------------------	-------



	HEBKU	2300	CHIRO	IGECY	2600	EON
		↑	◆ tr 205°	◆	↑ tr 187°	⬠
	2600	HITOB 2000	HISO 2.5 NM to RW13C	*LNAV only.		
	GP 3.00° TCH 46	2000	*1.1 NM to RW13C			
			*1440			
CATEGORY	A	B	C	D		
LPV DA		861/40	250 (300-¾)			
LNAV/VNAV DA		1044-1¼	433 (500-1¼)			
LNAV MDA	1020/55	409 (400-1)	1020/60	409 (400-1¼)		
CIRCLING	1120-1	500 (500-1)	1340-2	1340-2¼		
			720 (800-2)	720 (800-2¼)		



EC-3, 31 DEC 2020 to 28 JAN 2021

EC-3, 31 DEC 2020 to 28 JAN 2021