

WAAS CH <b>65614</b> <b>W04A</b>	APP CRS <b>047°</b>	Rwy Idg <b>5927</b> TDZE <b>619</b> Apt Elev <b>620</b>
--	------------------------	---

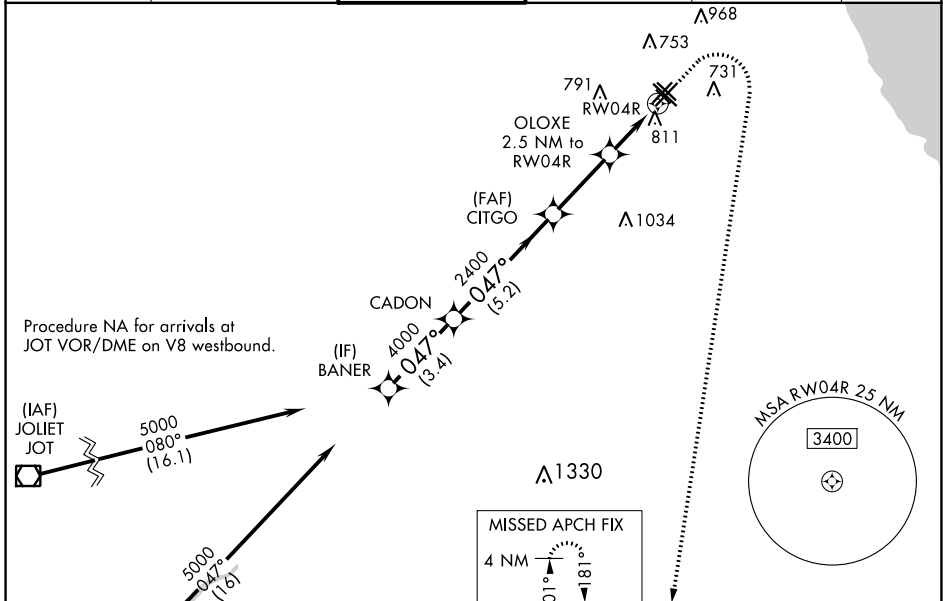
# RNAV (GPS) Z RWY 4R

CHICAGO MIDWAY INTL (MDW)

**⚠** Circling to Rwy 31R NA at night. For uncompensated Baro-VNAV systems, LNAV/VNAV NA below -19°C (-2°F) or above 54°C (130° F). Rwy 4R helicopter visibility reduction below RVR 4000 NA. DME/DME RNP-0.3 NA.

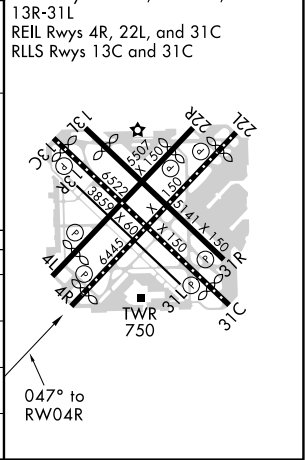
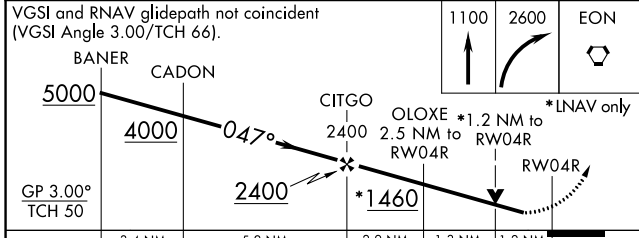
**⚠** MISSED APPROACH: Climb to 1100 then climbing right turn to 2600 direct EON VORTAC and hold.

D-ATIS <b>132.75</b>	CHICAGO APP CON <b>128.2 353.875</b>	MIDWAY TOWER <b>135.2 269.125</b>	GND CON <b>121.65</b>	CLNC DEL <b>124.625</b>	CPDLC
-------------------------	---	--------------------------------------	--------------------------	----------------------------	-------



ELEV 620	<b>D</b>	TDZE 619
----------	----------	----------

HIRL Rwys 13C-31C and 4R-22L  
MIRL Rwys 4L-22R, 13L-31R, and 13R-31L  
REIL Rwys 4R, 22L, and 31C  
RLS Rwys 13C and 31C



CATEGORY	A	B	C	D
LPV DA	869/40	250 (300-¾)	869/50	250 (300-1)
LNAV/VNAV DA	1097-1½		478 (500-1½)	
LNAV MDA	1080/55	461 (500-1)	1080-1¾	461 (500-1¾)
<b>C</b> CIRCLING	1120-1	500 (500-1)	1340-2 720 (800-2)	1340-2¼ 720 (800-2¼)

EC-3, 31 DEC 2020 to 28 JAN 2021

EC-3, 31 DEC 2020 to 28 JAN 2021