

ILS RWY 22L (SA CAT I & II)

CHICAGO O'HARE INTL (ORD)

LOC I-LQQ	APP CRS	Rwy ldg	8075
110.1	225°	TDZE	654
		Apt Elev	680

RADAR required for procedure entry.

- Simultaneous approach authorized.
- SA CAT I: Requires specific OPSPEC, MSPEC, or LOA approval and use of HUD to DH.
- SA CAT II: Reduced lighting: Requires specific OPSPEC, MSPEC, or LOA approval and use of autoland or HUD to touchdown.

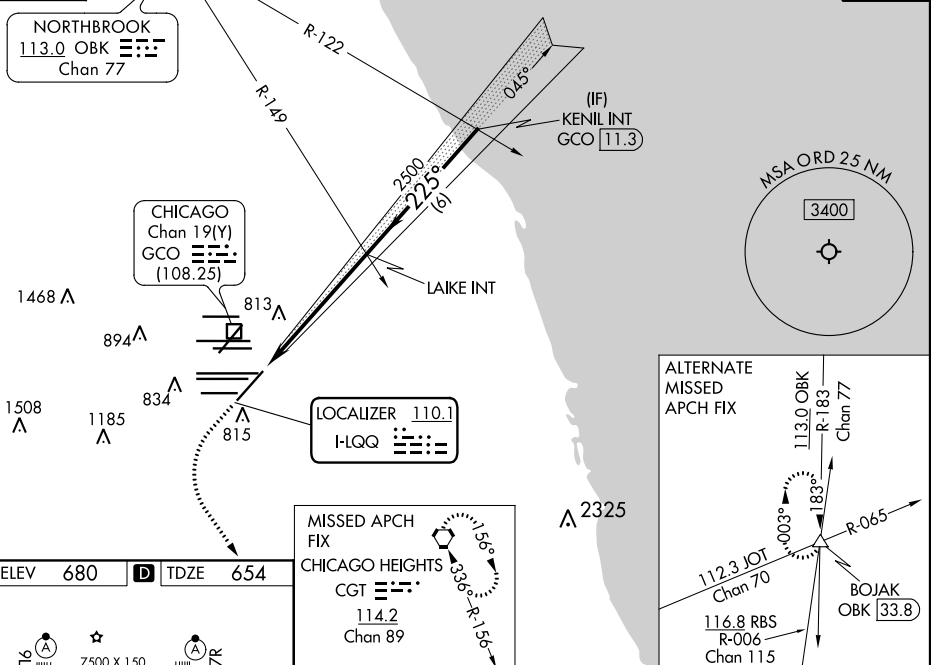


MISSED APPROACH:
Climb to 1100 then climbing left turn to 4000 direct CGT VORTAC.

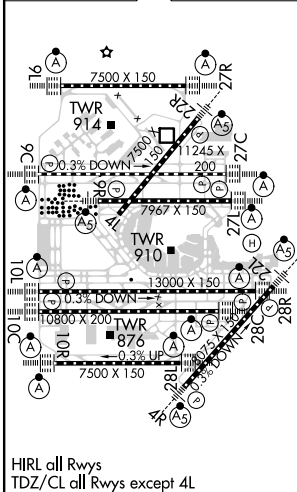
CHICAGO APP CON	O'HARE TOWERS				GND CON	(TWR CENTER)	CLNC DEL			
119.0 292.125	128.15	348.0	(Rwy 9L/27R)	133.0 348.0	(110R/28L)	124.125	(TWR NORTH)	121.75	(OBND)	121.6
	120.75	121.15	126.9	132.7	348.0	(CENTER)	118.05	(TWR SOUTH)	121.9	(IBND)
							226.675	(ALL TWRs)		

D-ATIS
135.4
282.225

CPDLC



ELEV 680 **D** TDZE 654



1100	4000	CGT	VGSI and ILS glidepath not coincident (VGSI Angle 3.00/TCH 73).	
			KENIL INT GCO 11.3	
			GS 3.00° TCH 55	
CATEGORY	A	B	C	D
S-ILS 22L	SA CAT I	RA 164/16	150 DA 804	
S-ILS 22L	SA CAT II	RA 112/12	100 DA 754	

SA CATEGORY I & II ILS - SPECIAL AIRCREW & AIRCRAFT CERTIFICATION REQUIRED

EC-3, 31 DEC 2020 to 28 JAN 2021

EC-3, 31 DEC 2020 to 28 JAN 2021