

| | | |
|---|------------------------|--|
| LOC/DME I-VZE 108.95 Chan 26 (Y) | APP CRS 273° | Rwy ldg 10800 TDZE 651 Apt Elev 680 |
|---|------------------------|--|

ILS RWY 28C (CAT II & III)

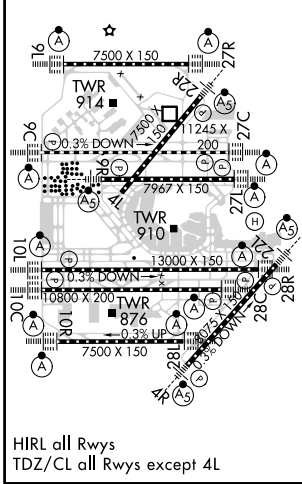
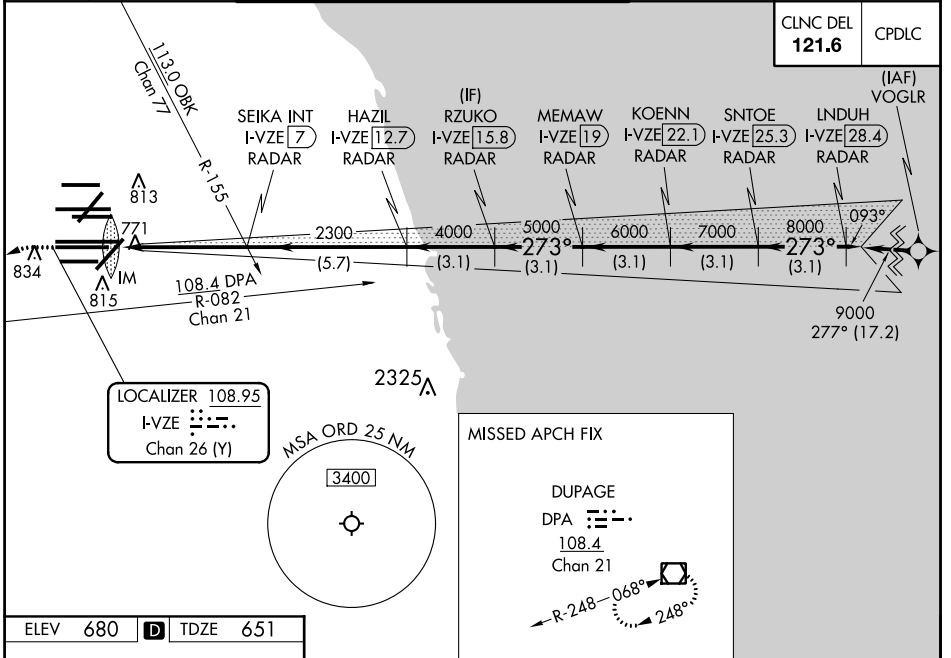
CHICAGO O'HARE INTL (ORD)

From VOGLR: RNAV 1-GPS required.
Aircraft not GPS equipped - RADAR required for procedure entry.
DME or RADAR required.

Simultaneous approach authorized. CAT II: RVR 1000 authorized with specific OPSPEC, MSPEC, or LOA approval and use of outland or HUD to touchdown.

ALSIF-2
MISSED APPROACH: Climb to 1100 then climbing left turn to 4000 on heading 215° and DPA VOR/DME R-082 to DPA VOR/DME and hold.

| | | | | |
|--|--|--|---|---|
| D-ATIS 135.4 282.225 | CHICAGO APP CON 119.0 292.125 | O'HARE TOWERS 128.15 348.0 (Rwy 9L/27R) 133.0 348.0 (10R/28L) 120.75 121.15 126.9 132.7 348.0 (CENTER) | GND CON (TWR NORTH) 124.125 (TWR SOUTH) 118.05 (ALL TWRs) 226.675 | (TWR CENTER) 121.75 (RBNB) 121.9 |
|--|--|--|---|---|



| | | | | | |
|-----------|-----------------------------|-------------------------|------------------------|---|------------------------|
| ELEV 680 | TDZE 651 | 1100 hdg 215° | DPA R-082 | VGSI and ILS glidepath not coincident (VGSI Angle 3.00/TCH 80). | INDUH I-VZE 28.4 RADAR |
| | | RZUKO I-VZE 15.8 RADAR | KOENN I-VZE 22.1 RADAR | SNTOE I-VZE 25.3 RADAR | MEMAW I-VZE 19 RADAR |
| | | SEIKA INT I-VZE 7 RADAR | HAZIL I-VZE 12.7 RADAR | INDUH I-VZE 28.4 RADAR | MEMAW I-VZE 19 RADAR |
| Category | A | B | C | D | |
| S-ILS 28C | CAT II RA 105/12 100 DA 751 | | | | |
| S-ILS 28C | CAT III RVR 06 | | | | |

CATEGORY II & III ILS - SPECIAL AIRCREW & AIRCRAFT CERTIFICATION REQUIRED

EC-3, 31 DEC 2020 to 28 JAN 2021

EC-3, 31 DEC 2020 to 28 JAN 2021