

LOC/DME I-VQX 110.75 Chan 44(Y)	APP CRS 274°	Rwy ldg TDZE 7500 667	Apt Elev 680
--	------------------------	---	------------------------

ILS RWY 28L (SA CAT I)

CHICAGO O'HARE INTL (ORD)

From VOGLR: RNAV 1-GPS required.

Aircraft not GPS equipped - RADAR required for procedure entry. DME or RADAR required.

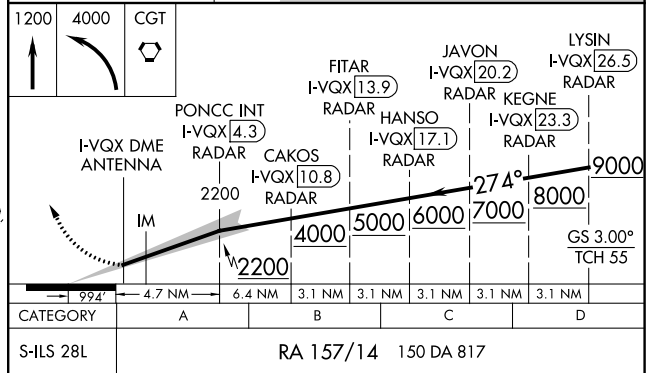
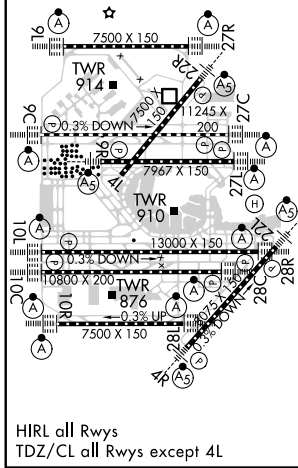
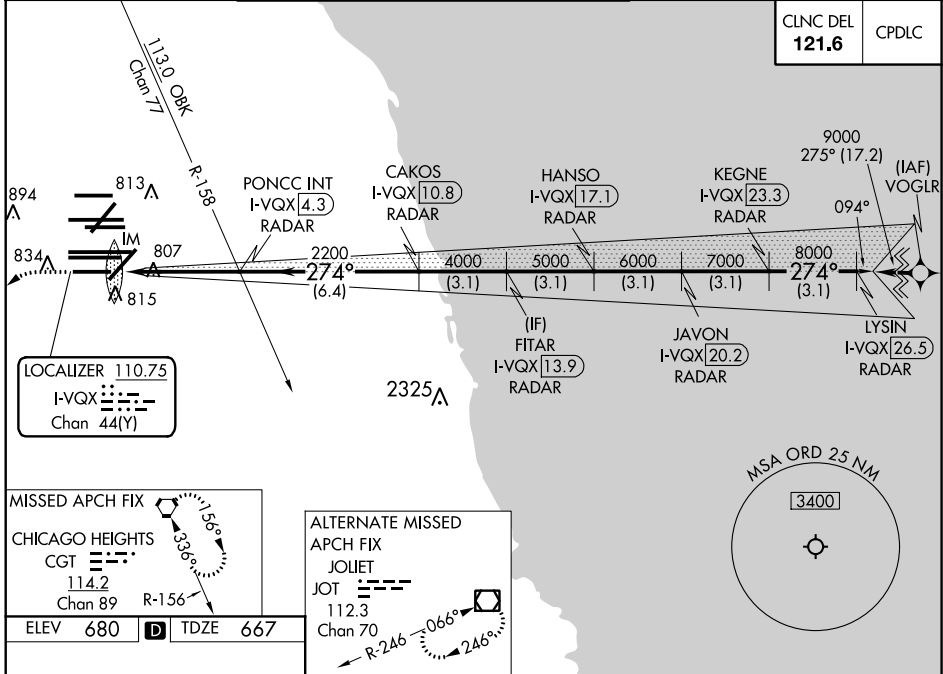
ALSIF-2

MISSED APPROACH: Climb to 1200 then climbing left turn to 4000 direct CGT VORTAC and hold.

Simultaneous approach authorized.
Requires specific OPSPEC, MSPEC, or LOA approval and use of HUD to DH.

D-ATIS 135.4	CHICAGO APP CON 119.0 292.125	O'HARE TOWERS 128.15 348.0 (Rwy 9L/27R) 133.0 348.0 (10R/28L)	GND CON (TWR NORTH) 121.75 (OBND)	(TWR CENTER) 121.9 (OBND)
282.225	119.0 292.125	120.75 121.15 126.9 132.7 348.0 (CENTER)	118.05 (TWR SOUTH)	121.9 (IBND)
			226.675 (ALL TWSR)	

CLNC DEL 121.6	CPDLC
--------------------------	-------



SA CATEGORY I ILS-SPECIAL AIRCREW & AIRCRAFT CERTIFICATION REQUIRED

EC-3, 31 DEC 2020 to 28 JAN 2021

EC-3, 31 DEC 2020 to 28 JAN 2021