

LOC/DME I-TSL 111.1 Chan 48	APP CRS 273°	Rwy ldg 13000 TDZE 651 Apt Elev 680
--	------------------------	--

ILS RWY 28R (CAT II & III)

CHICAGO O'HARE INTL (ORD)

From VOGLR: RNAV 1-GPS required.
Aircraft not GPS equipped - RADAR required for procedure entry.
DME or RADAR required.

ALSF-2

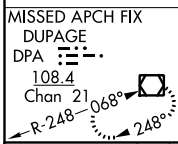
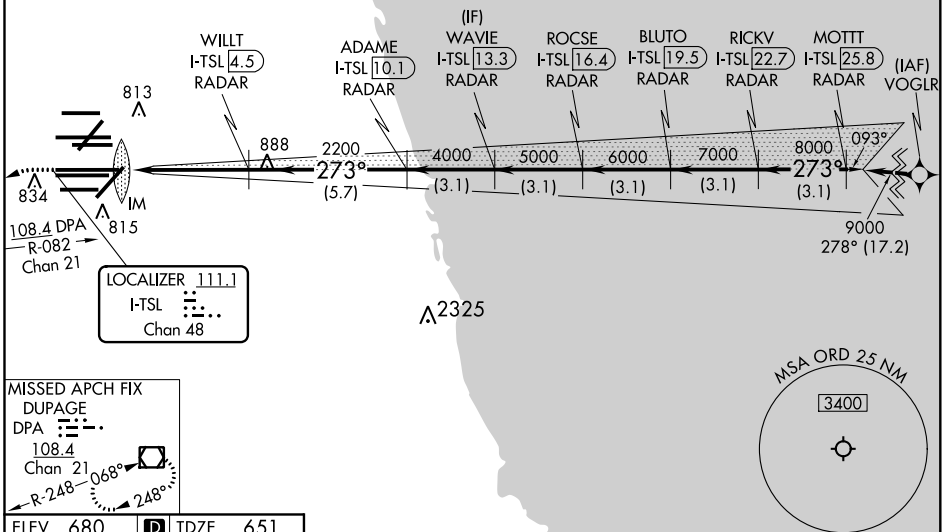


MISSED APPROACH: Climb to 1100 then climbing left turn to 4000 on heading 215° and DPA VOR/DME R-082 to DPA VOR/DME and hold.

Simultaneous approach authorized.

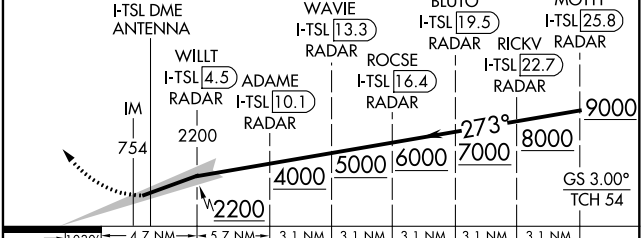
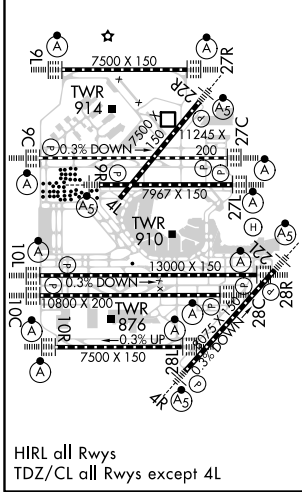
D-ATIS 135.4 282.225	CHICAGO APP CON 119.0 292.125	O'HARE TOWERS 128.15 348.0 (Rwy 9L/27R) 133.0 348.0 (10R/28L) 120.75 121.15 126.9 132.7 348.0 (CENTER)	GND CON (TWR CENTER) 124.125 (TWR NORTH) 121.75 (OBND) 118.05 (TWR SOUTH) 121.9 (IBND) 226.675 (ALL TWRs)
--	---	--	---

CLNC DEL 121.6	CPDLC
--------------------------	-------



ELEV 680	D	TDZE 651
----------	----------	----------

1100	4000	DPA	VGSI and ILS glidepath not coincident (VGSI Angle 3.00/TCH 70).
↑	hdg 215°	R-082	



CATEGORY	A	B	C	D
S-ILS 28R	CAT II RA 97/12 100 DA 751			
S-ILS 28R	CAT III RVR 06			

CATEGORY II & III ILS - SPECIAL AIRCREW & AIRCRAFT CERTIFICATION REQUIRED

EC-3, 31 DEC 2020 to 28 JAN 2021

EC-3, 31 DEC 2020 to 28 JAN 2021