

LOC I-FJU 110.1	APP CRS 045°	Rwy ldg TDZE Apt Elev 8075 661 680
---------------------------	------------------------	--

ILS RWY 4R (SA CAT I & II)
CHICAGO O'HARE INTL (ORD)

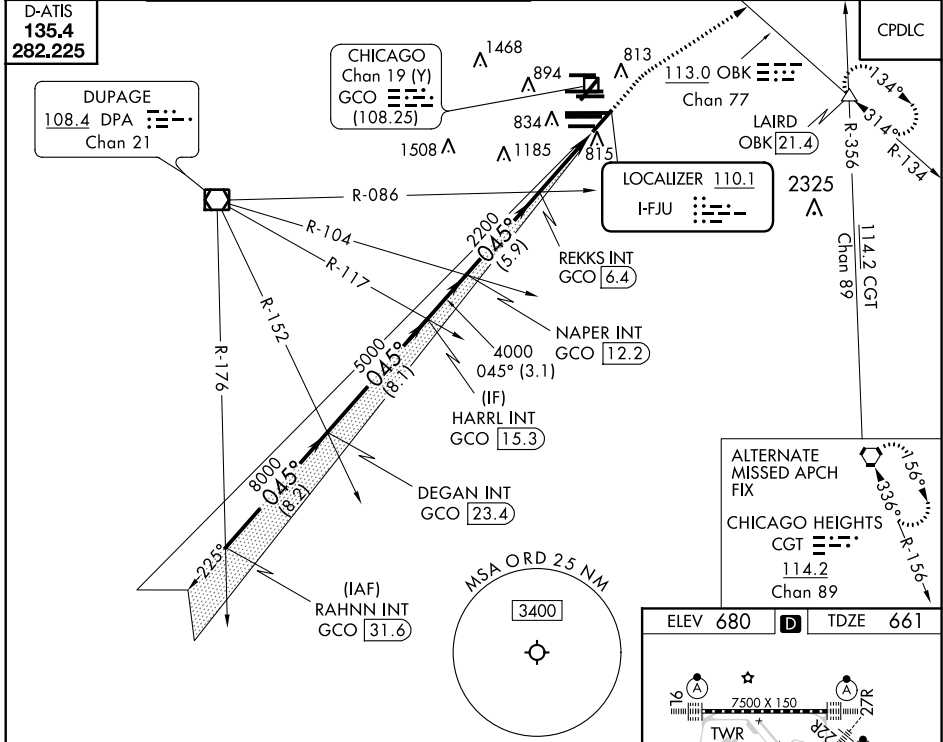
RADAR required for procedure entry.

Simultaneous approach authorized.

SA CAT I: Requires specific OPSPEC, MSPEC, or LOA approval and use of HUD to DH.
SA CAT II: Reduced lighting: Requires specific OPSPEC, MSPEC, or LOA approval and use of autoland or HUD to touchdown.

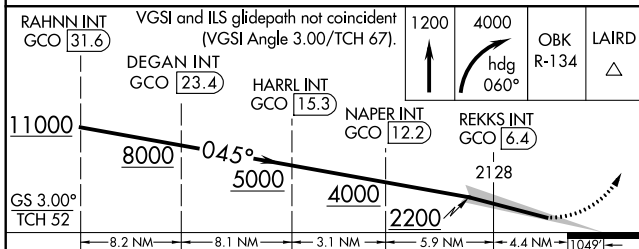
MALSR
MISSED APPROACH: Climb to 1200 then climbing right turn to 4000 on heading 060° and OBK VOR/DME R-134 to LAIRD INT/OBK 21.4 DME and hold.

CHICAGO APP CON 119.0 292.125	O'HARE TOWERS 128.15 348.0 (Rwy 9L/27R) 120.75 121.15 126.9 132.7 348.0 (CENTER)	GND CON (TWR NORTH) 124.125 118.05 (TWR SOUTH) 226.675 (ALL TWRS)	(TWR CENTER) 121.75 (OBND) 121.9 (IBND)	CLNC DEL 121.6
---	--	--	---	--------------------------



ALTERNATE MISSED APCH FIX

CHICAGO HEIGHTS
CGT
114.2
Chan 89



ELEV 680	D	TDZE 661
----------	----------	----------

TWR 914
TWR 910
TWR 876

7500 X 150
10800 X 200
13000 X 150

HIRL all Rws
TDZ/CL all Rws except 4L

CATEGORY	A	B	C	D
S-ILS 4R	SA CAT I	RA 160/16	150 DA 811	
S-ILS 4R	SA CAT II	RA 111/12	100 DA 761	

SA CATEGORY I & II ILS - SPECIAL AIRCREW & AIRCRAFT CERTIFICATION REQUIRED

EC-3, 31 DEC 2020 TO 28 JAN 2021

EC-3, 31 DEC 2020 TO 28 JAN 2021