

LOC/DME I-SXH 108.95 Chan 26(Y)	APP CRS 093°	Rwy Ldg TDZE Apt Elev	10540 669 680
--	------------------------	-----------------------------	--

ILS or LOC RWY 10C

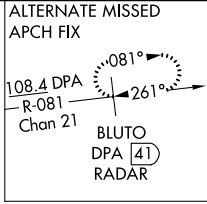
CHICAGO O'HARE INTL (ORD)

From GIBNS: RNAV-1 GPS required.
 RNAV 1-GPS or RADAR required for procedure entry. DME or RADAR required.
 Simultaneous approach authorized.

ALSIF-2
 MISSED APPROACH: Climb to 4000 on heading 093° and CGT VORTAC R-336 to CGT VORTAC and hold.

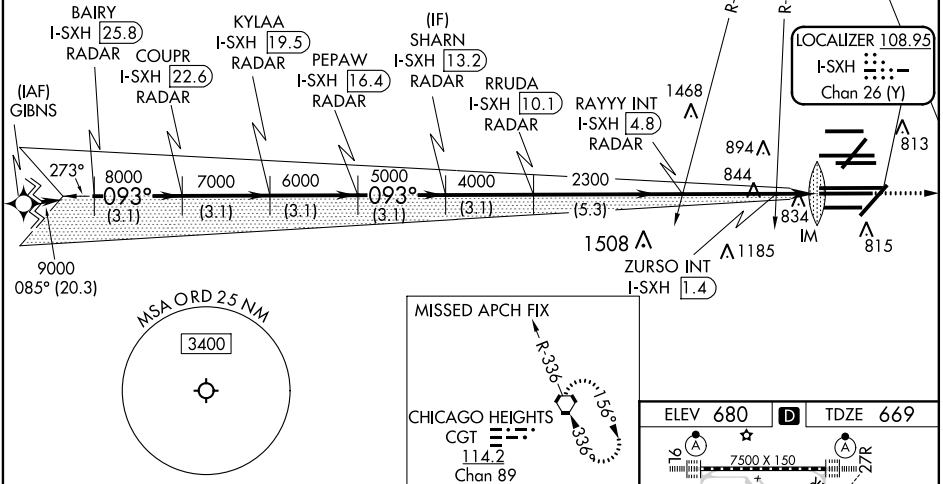
CHICAGO APP CON 119.0 292.125	O'HARE TOWERS Rwy 9L/27R 128.15 348.0	133.0 348.0 (10R/28L)	GND CON (TWR NORTH) 124.125	(TWR SOUTH) 118.05	(TWR CENTER) 121.75 (OBND)	(IBND) 121.9	CLNC DEL 121.6
---	--	------------------------------	---------------------------------------	------------------------------	--------------------------------------	------------------------	--------------------------

D-ATIS
135.4
282.225

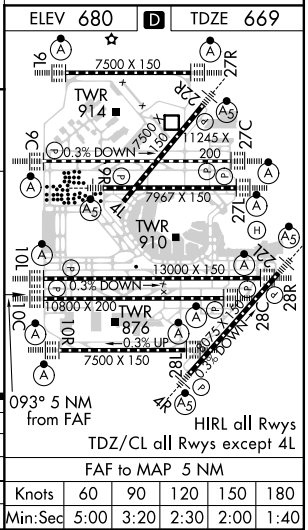


NORTHBROOK
113.0 OBK
Chan 77

CPDLC



BAIRY I-SXH [25.8] RADAR	VGSI and ILS glidepath not coincident KYLAA (VGSI Angle 3.00/TCH 75).	4000	hdg 093°	CGT R-336	CGT
COUPR I-SXH [22.6] RADAR	SHARN I-SXH [13.2] RADAR	RAYYY INT I-SXH [4.8] RADAR	* LOC only		
9000 093°	PEPAW I-SXH [16.4] RADAR	RRUDA I-SXH [10.1] RADAR	I-SXH DME ANTENNA		
8000	ZURSO INT I-SXH [1.4]	IM	I-SXH [0.2]		
7000					
6000					
5000					
4000					
3.1 NM	3.1 NM	3.1 NM	3.1 NM	3.1 NM	5.3 NM
CATEGORY					
S-ILS 10C 869/18 200 [200-½]					
S-LOC 10C 1220/24 551 (600-½) 1220/60 551 (600-¼)					
ZURSO FIX MINIMUMS (DUAL VOR RECEIVERS OR DME REQUIRED)					
S-LOC 10C 1100/24 431 (500-½) 1100/40 431 (500-¾)					



EC-3, 31 DEC 2020 to 28 JAN 2021

EC-3, 31 DEC 2020 to 28 JAN 2021