

LOC/DME I-MED 111.1 Chan 48	APP CRS 093°	Rwy ldg 12246 TDZE 672 Apt Elev 680
---	------------------------	--

ILS or LOC RWY 10L

CHICAGO O'HARE INTL (ORD)

From GIBNS: RNAV-1 GPS required. ALSF-2 (A) MISSED APPROACH: Climb to 4000 on heading 093° and CGT VORTAC R-336 to CGT VORTAC and hold.

RNAV 1-GPS or RADAR required for procedure entry. DME or RADAR required.

Simultaneous approach authorized.

CHICAGO APP CON 119.0 292.125	O'HARE TOWERS 128.15 348.0 (Rwy 9L/27R) 133.0 348.0 (10R/28L) 120.75 121.15 126.9 132.7 348.0 (CENTER)	GND CON (TWR CENTER) 124.125 (TWR NORTH) 118.05 (TWR SOUTH) 226.675 (ALL TWRs)	(TWR CENTER) 121.75 (OBND) 121.9 (IBND)	CLNC DEL 121.6
---	--	--	---	--------------------------

D-ATIS **135.4**
282.225

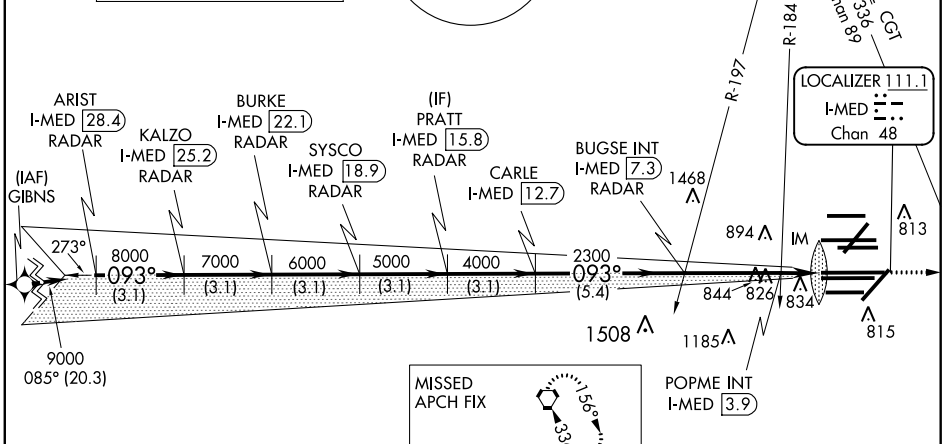
ALTERNATE MISSED APCH FIX

108.4 DPA $\frac{3}{2}$ $\frac{261}{2}$ -R-081
Chan 21
BLUTO DPA $\frac{41}{1}$ RADAR

MSA ORD 2.5 NM
3400

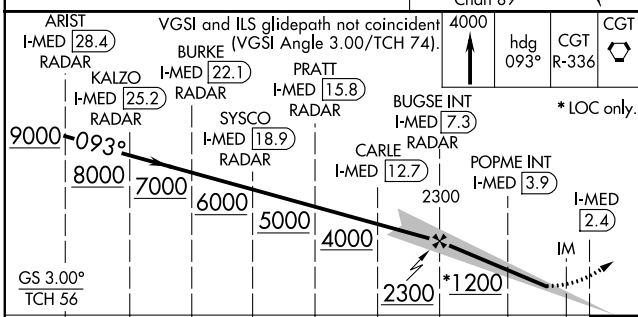
NORTHBROOK
113.0 OBK
Chan 77

CPDLC



MISSED APCH FIX 156°
336° R-156

CHICAGO HEIGHTS
CGT 114.2
Chan 89



ELEV 680 TDZE 672

TWR 914
TWR 910
TWR 876

0.3% DOWN
0.3% UP
0.3% DOWN

1093° 4.9 NM from FAF

HIRL all Rwy's TDZ/CL all Rwy's except 4L
FAF to MAP 4.9 NM

Knots	60	90	120	150	180
Min:Sec	4:54	3:16	2:27	1:58	1:38

CATEGORY	A	B	C	D
S-ILS 10L	872/18		200 (200-½)	
S-LOC 10L	1200/24 528 (600-½)		1200/55 528 (600-1)	
POPME FIX MINIMUMS (DUAL VOR RECEIVERS OR DME REQUIRED)				
S-LOC 10L	1080/24 408 (400-½)		1080/40 408 (400-¾)	

EC-3, 31 DEC 2020 to 28 JAN 2021

EC-3, 31 DEC 2020 to 28 JAN 2021