

ILS or LOC RWY 22L

CHICAGO O'HARE INTL (ORD)

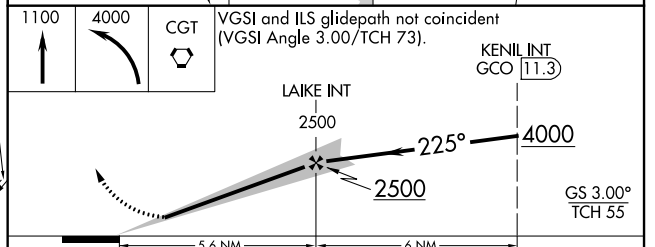
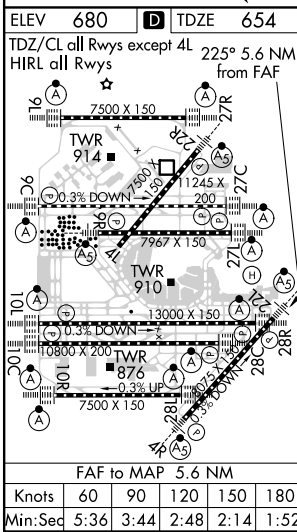
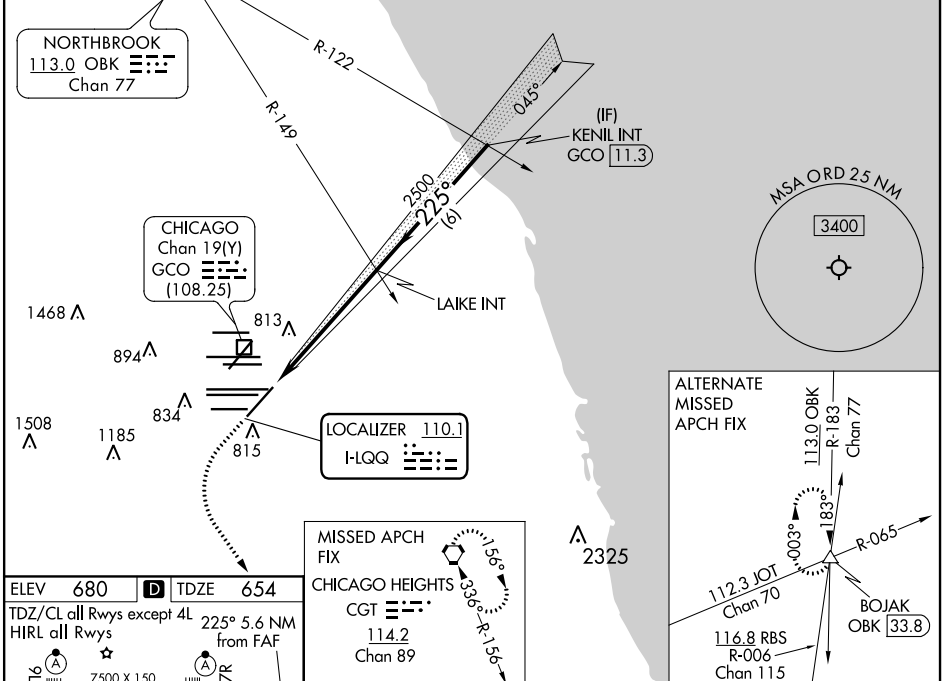
LOC I-LQQ	APP CRS	Rwy ldg	8075
110.1	225°	TDZE	654
		Apt Elev	680

RADAR required for procedure entry.		MALSR	MISSED APPROACH: Climb to 1100 then climbing left turn to 4000 direct CGT VORTAC.
Simultaneous approach authorized.			

CHICAGO APP CON	O'HARE TOWERS	GND CON	(TWR CENTER)	CLNC DEL
119.0 292.125	128.15 348.0 (Rwy 9L/27R) 133.0 348.0 (10R/28L)	124.125 (TWR NORTH) 121.75 (OBND)	121.9 (IBND)	121.6
	120.75 121.15 126.9 132.7 348.0 (CENTER)	118.05 (TWR SOUTH) 226.675 (ALL TWRs)		

D-ATIS
135.4
282.225

CPDLC



VGSI and ILS glidepath not coincident (VGSI Angle 3.00/TCH 73).	KENIL INT GCO 113.3			
	GS 3.00° TCH 55			
CATEGORY	A	B	C	D
S-ILS 22L	854/18 200 (200-½)			
S-LOC 22L	1120/24	466 (500-½)	1120/50	466 (500-1)
CIRCLING	1220-1	540 (600-1)	1220-1½	1460-2½
			540 (600-½)	780 (800-2½)

EC-3, 31 DEC 2020 to 28 JAN 2021

EC-3, 31 DEC 2020 to 28 JAN 2021