

LOC/DME I-AIC 110.5 Chan 42	APP CRS 273°	Rwy ldg 7782 TDZE 654 Apt Elev 680
---	------------------------	--

ILS or LOC RWY 27L

CHICAGO O'HARE INTL (ORD)

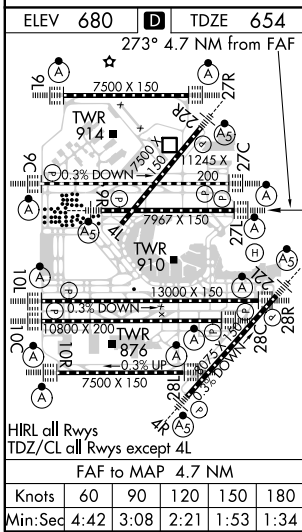
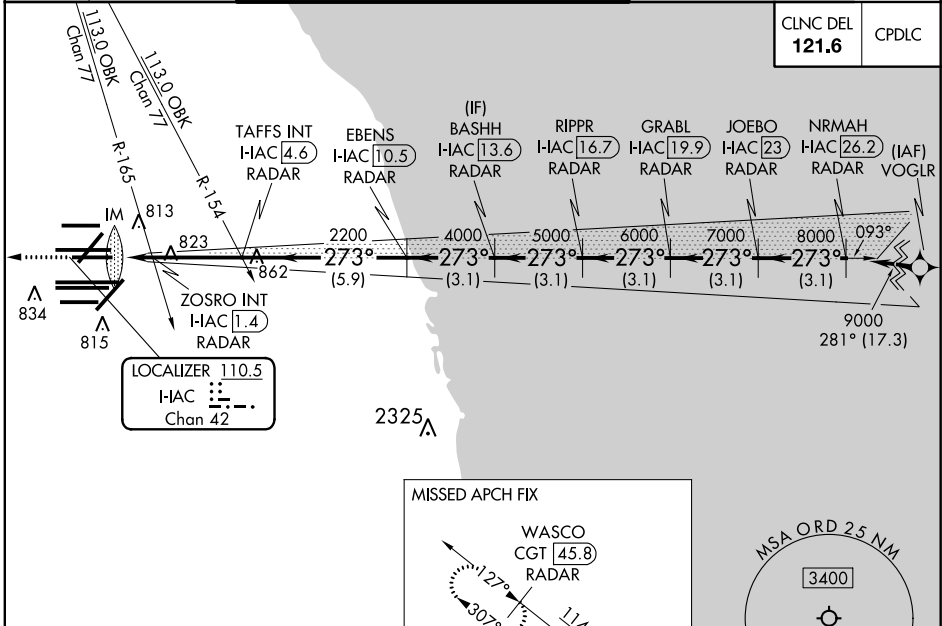
From VOGLR: RNAV 1-GPS required. Aircraft not GPS equipped - RADAR required for procedure entry. DME or RADAR required.

ALSF-2

MISSED APPROACH: Climb to 1200 then climb to 4000 on heading 265° and on CGT VORTAC R-307 to WASCO/CGT 45.8 DME/RADAR and hold.

Simultaneous approach authorized.

D-ATIS 135.4 282.225	CHICAGO APP CON 119.0 292.125	O'HARE TOWERS 128.15 348.0 (Rwy 9L/27R) 133.0 348.0 (10R/28L) 120.75 121.15 126.9 132.7 348.0 (CENTER)	CND CON (TWR CENTER) 124.125 (TWR NORTH) 121.75 (OBND) 118.05 (TWR SOUTH) 121.9 (IBND) 226.675 (ALL TWRs)
--	---	--	---



ELEV 680	TDZE 654	273° 4.7 NM from FAF	
		VGSi and ILS glidepath not coincident (VGSi Angle 3.00/TCH 67).	
1200	4000	CGT R-307	WASCO CGT 45.8 RADAR
LOC only I-HAC DME ANTENNA I-HAC 0.1 ZOSRO INT I-HAC 1.4 RADAR TAFFS INT I-HAC 4.6 RADAR EBENS I-HAC 10.5 RADAR BASHH I-HAC 13.6 RADAR RIPPR I-HAC 16.7 RADAR GRABL I-HAC 19.9 RADAR JOEBO I-HAC 23 RADAR NRMAH I-HAC 26.2 RADAR		9000 8000 7000 6000 5000 4000 2200 1160	
CATEGORY A B C D		S-ILS 27L 854/18 200 (200-½) S-LOC 27L 1160/24 506 (500-½) 1160/55 506 (500-1)	
ZOSRO FIX MINIMUMS (DUAL VOR RECEIVERS OR DME REQUIRED)			
S-LOC 27L 1080/24 426 (400-½)		1080/40 426 (400-¾)	

EC-3, 31 DEC 2020 to 28 JAN 2021

EC-3, 31 DEC 2020 to 28 JAN 2021