

LOC/DME I-ABU 111.75 Chan 54 (Y)	APP CRS 273°	Rwy Idg 7500 TDZE 664 Apt Elev 680
---	------------------------	---

ILS or LOC RWY 27R

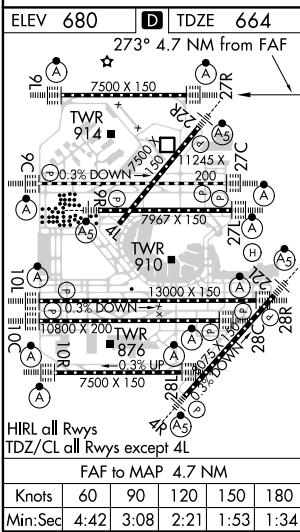
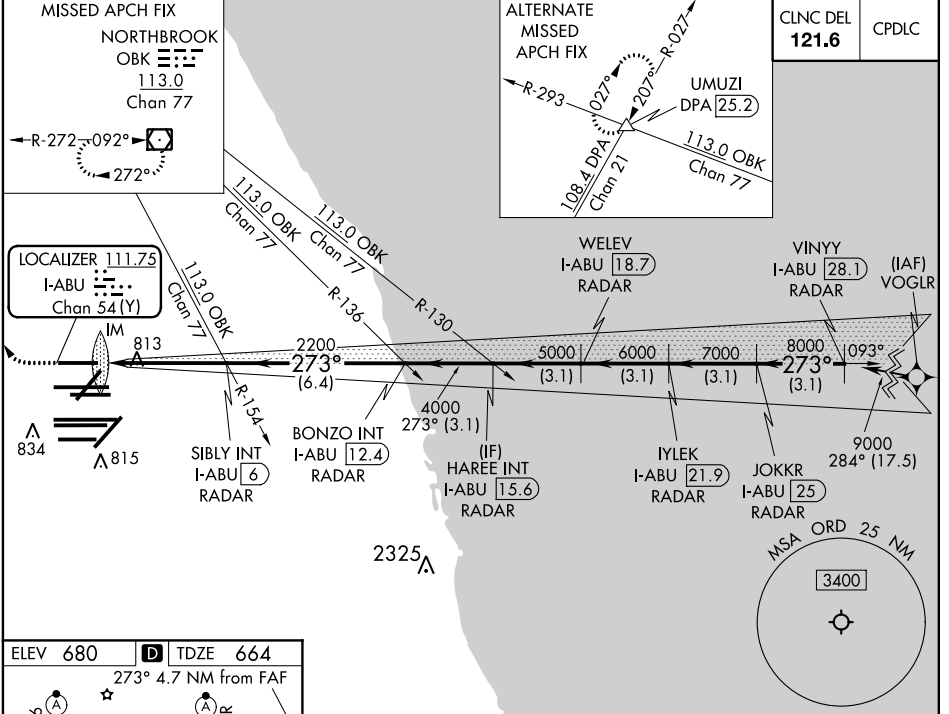
CHICAGO O'HARE INTL (ORD)

RNAV-1 GPS or RADAR required for procedure entry. RADAR or DME required. **ALSF-2**

MISSED APPROACH: Climb to 1100 then climbing right turn to 4000 direct OBK VOR/DME and hold, continue climb-in-hold to 4000.

Simultaneous approach authorized.

D-ATIS 135.4	CHICAGO APP CON 282.225 119.0 292.125	O'HARE TOWERS 128.15 348.0 133.0 348.0 124.125 118.05 226.675	GND CON (TWR NORTH) 121.75	(TWR CENTER) 121.75	(TWR SOUTH) 121.9	(TWR CENTER) (CBND) 121.9	(TWR SOUTH) (IBND) 121.9
------------------------	---	---	--------------------------------------	-------------------------------	-----------------------------	-------------------------------------	------------------------------------



1100	4000	OBK		
*LOC only.				
I-ABU 1.4	SIBLY INT I-ABU 6 RADAR	HAREE INT I-ABU 15.6 RADAR	IYLEK I-ABU 21.9 RADAR	VINYY I-ABU 28.1 RADAR
I-ABU 2.6	BONZO INT I-ABU 12.4 RADAR	WELEV I-ABU 18.7 RADAR	JOKKR I-ABU 25 RADAR	
IM				9000
2200	2200	4000	5000	6000
		7000	8000	9000
				GS 3.00° TCH 55
0.2 NM	1.0 NM	3.4 NM	3.1 NM	3.1 NM
3.4 NM	6.4 NM	3.1 NM	3.1 NM	3.1 NM
CATEGORY	A	B	C	D
S-ILS 27R	864/18 200 (200-1/2)			
S-LOC 27R	1120/24	456 (500-1/2)	1120/45	456 (500-7/8)

EC-3, 31 DEC 2020 to 28 JAN 2021

EC-3, 31 DEC 2020 to 28 JAN 2021