

|   |                        |  |
|---|------------------------|--|
| LOC/DME I-VZE<br><b>108.95</b><br>Chan 26 (Y) | APP CRS<br><b>273°</b> | Rwy ldg <b>10800</b><br>TDZE <b>651</b><br>Apt Elev <b>680</b> |
|---|------------------------|--|

# ILS or LOC RWY 28C

CHICAGO O'HARE INTL (ORD)

From VOGLR: RNAV 1-GPS required.  
Aircraft not GPS equipped - RADAR required for procedure entry.  
DME or RADAR required.

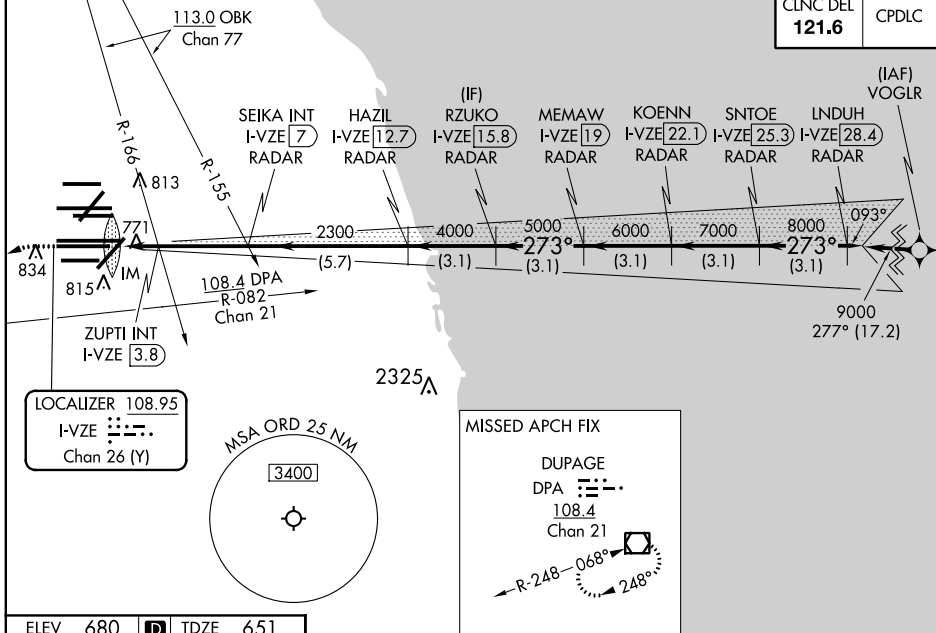


MISSED APPROACH: Climb to 1100 then climbing left turn to 4000 on heading 215° and DPA VOR/DME R-082 to DPA VOR/DME and hold.

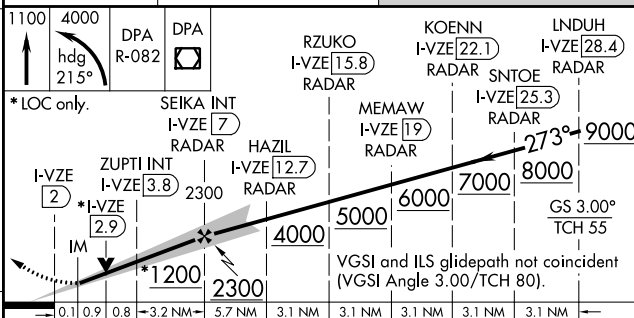
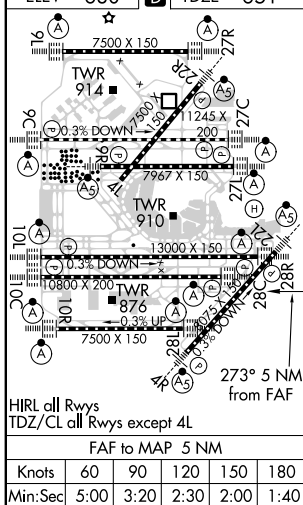
Simultaneous approach authorized.

|  |   |  |  |
|--|---|--|--|
| D-ATIS<br><b>135.4</b><br><b>282.225</b> | CHICAGO APP CON<br><b>119.0 292.125</b> | O'HARE TOWERS<br><b>128.15 348.0</b> (Rwy 9L/27R) <b>133.0 348.0</b> (10R/28L) <b>120.75 121.15 126.9 132.7 348.0</b> (CENTER) | GND CON (TWR CENTER) <b>124.125</b> (TWR NORTH) <b>121.75</b> (OBND) <b>118.05</b> (TWR SOUTH) <b>121.9</b> (IBND) <b>226.675</b> (ALL TWRs) |
|--|---|--|--|

|                          |       |
|--------------------------|-------|
| CLNC DEL<br><b>121.6</b> | CPDLC |
|--------------------------|-------|



|                 |                 |
|-----------------|-----------------|
| ELEV <b>680</b> | TDZE <b>651</b> |
|-----------------|-----------------|



|   |                    |             |         |              |
|---|--------------------|-------------|---------|--------------|
| CATEGORY  | A                  | B           | C       | D            |
| S-ILS 28C   | 851/18 200 (200-½) |             |         |              |
| S-LOC 28C   | 1200/24            | 549 (600-½) | 1200/60 | 549 (600-1¼) |
| ZUPTI FIX MINIMUMS (DUAL VOR RECEIVERS OR DME REQUIRED) |                    |             |         |              |
| S-LOC 28C   | 1040/24            | 389 (400-½) | 1040/35 | 389 (400-¾)  |