

LOC I-FJU	APP CRS	Rwy ldg	8075
110.1	045°	TDZE	661
		Apt Elev	680

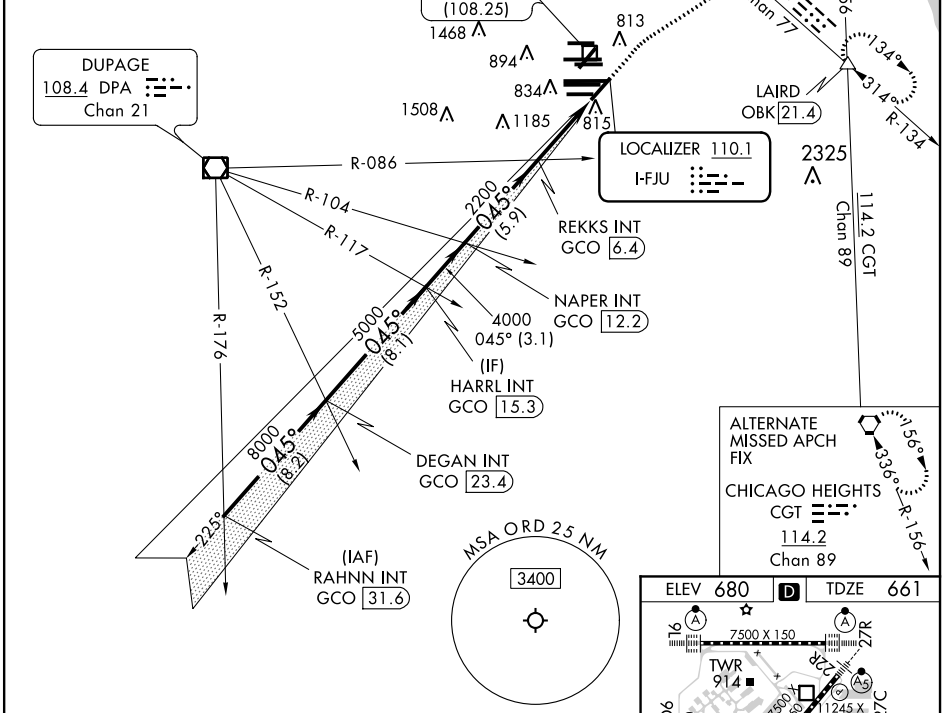
ILS or LOC RWY 4R

CHICAGO O'HARE INTL (ORD)

RADAR required for procedure entry.		MALSR	MISSED APPROACH: Climb to 1200 then climbing right turn to 4000 on heading 060° and OBK VOR/DME R-134 to LAIRD INT/OBK 21.4 DME and hold.
Simultaneous approach authorized.			

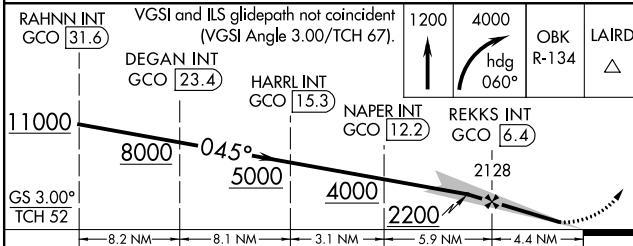
CHICAGO APP CON	O'HARE TOWERS	GND CON (TWR CENTER)	CLNC DEL
119.0 292.125	128.15 348.0 (Rwy 9L/27R) 133.0 348.0 (10R/28L) 348.0 (CENTER)	124.125 (TWR NORTH) 118.05 (TWR SOUTH) 226.675 (ALL TWRs)	121.6

D-ATIS
135.4
282.225



ALTERNATE MISSED APCH FIX

CHICAGO HEIGHTS CGT 114.2 Chan 89



RAHNN INT GCO 31.6	DEGAN INT GCO 23.4	HARRL INT GCO 15.3	NAPER INT GCO 12.2	REKKS INT GCO 6.4	LAIRD
VGSI and ILS glidepath not coincident (VGSI Angle 3.00/TCH 67).					
1200					
4000					
OBK R-134					
GS 3.00° TCH 52					
CATEGORY	A	B	C	D	
S-ILS 4R	861/18		200 (200-½)		
S-LOC 4R	1160/24 499 (500-½)		1160/50 499 (500-1)		
CIRCLING	1220-1 540 (600-1)		1220-1½ 1460-2½		
			540 (600-1½) 780 (800-2½)		

ELEV 680	TDZE 661
----------	----------

TWR 914, **TWR 910**, **TWR 876**

HRL all Rwys
TDZ/CL all Rwys except 4L
FAF to MAP 4.4 NM

Knots	60	90	120	150	180
Min:Sec	4:24	2:56	2:12	1:46	1:28

EC-3, 31 DEC 2020 to 28 JAN 2021

EC-3, 31 DEC 2020 to 28 JAN 2021