

LOC/DME I-OYG 111.9 Chan 56	APP CRS 093°	Rwy Idg 11245 TDZE 673 Apt Elev 680
--	------------------------	--

ILS or LOC RWY 9C

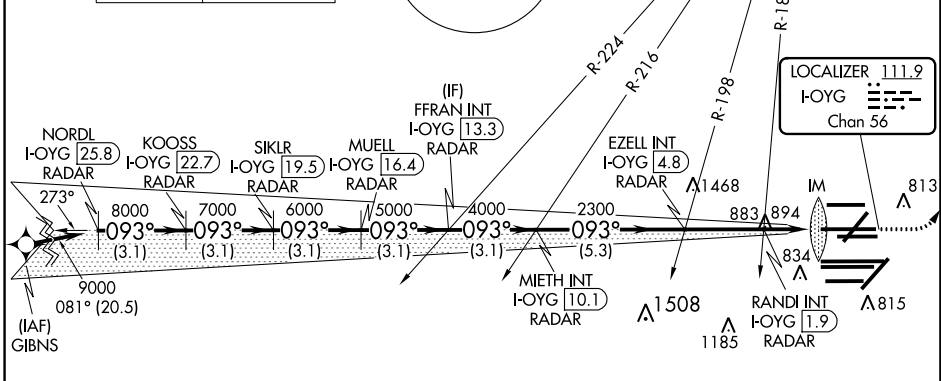
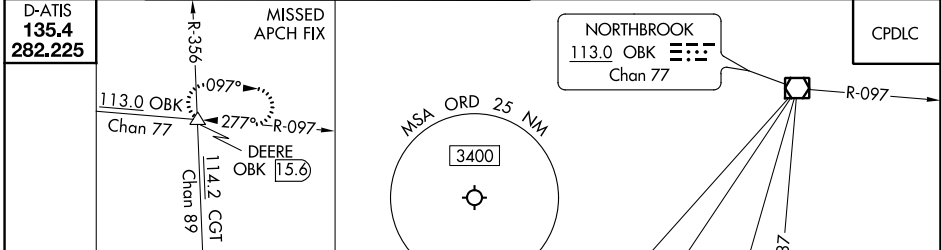
CHICAGO O'HARE INTL (ORD)

DME or RADAR required. From GIBNS: RNAV 1-GPS required. Aircraft not GPS equipped - RADAR required for procedure entry.

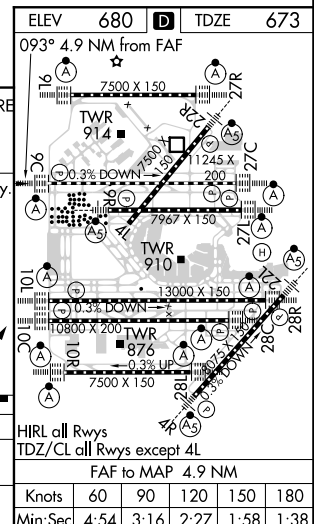
ALSF-2 MISSED APPROACH: Climb to 1200 then climbing left turn to 4000 on heading 037° and OBK VOR/DME R-097 to DEERE INT/ OBK 15.6 DME and hold.

Simultaneous approach authorized. For inop ALS, increase S-LOC 9C Cat C/D visibility to 1½ SM.

CHICAGO APP CON 119.0 292.125	O'HARE TOWERS 128.15 348.0 (Rwy 9L/27R) 133.0 348.0 (110R/28L) 126.9 348.0 (CENTER)	GND CON (TWR NORTH) 124.125 118.05 (TWR SOUTH) 226.675	(TWR CENTER) 121.75 (OBND) (IBND) 121.9	CLNC DEL 121.6
---	---	---	--	--------------------------



CATEGORY	A	B	C	D
	1140/24	467 (500-½)	1140/50	467 (500-1)



EC-3, 31 DEC 2020 to 28 JAN 2021

EC-3, 31 DEC 2020 to 28 JAN 2021