


LOC/DME I-JAV <b>110.5</b> Chan 42	APP CRS <b>093°</b>	Rwy ldg <b>7709</b> TDZE <b>660</b> Apt Elev <b>680</b>
--	------------------------	---

# ILS or LOC RWY 9R

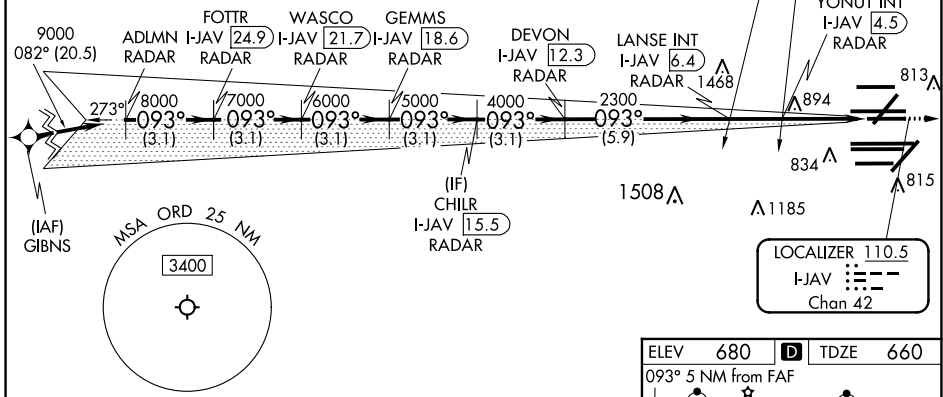
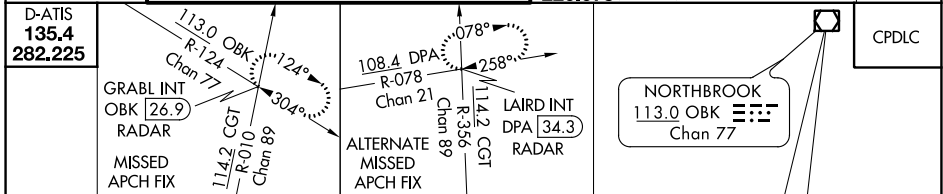
CHICAGO O'HARE INTL (ORD)

From GIBNS: RNAV 1-GPS required. RADAR or DME required.  
Aircraft not GPS equipped: RADAR required for procedure entry.

Simultaneous approach authorized.  
For inop ALS, increase S-LOC 9R Cat C/D visibility to 1 1/2 SM.

MALSR  MISSED APPROACH: Climb to 4000 on OBK VOR/DME R-124 to GRABL INT/OBK 26.9 DME/RADAR and hold.

CHICAGO APP CON <b>119.0 292.125</b>	O'HARE TOWERS <b>128.15 348.0</b> (Rwy 9L/27R) <b>126.9 348.0</b> (10R/28L) <b>132.7 348.0</b> (CENTER)	<b>124.125</b> (TWR NORTH) <b>118.05</b> (TWR SOUTH) <b>226.675</b> (ALL TWRs)	GND CON (TWR CENTER) <b>121.75</b> (OBND) <b>121.9</b> (IBND)	CLNC DEL <b>121.6</b>
---	--	--	---	--------------------------



VGS and ILS glidepath not coincident (VGS Angle 3.00/TCH 74).		4000	OBK R-124	GRABL INT
ADLMN RADAR	FOTTR I-JAV 24.9 RADAR	WASCO I-JAV 21.7 RADAR	CHILR I-JAV 15.5 RADAR	LANSE INT I-JAV 6.4 RADAR
9000	8000	7000	6000	5000
8000	7000	6000	5000	4000
GS 3.00° TCH 57	3.1 NM	3.1 NM	3.1 NM	3.1 NM
			5.9 NM	1.9 NM
				1.8 NM
CATEGORY	A	B	C	D
S-ILS 9R	860/18		200 (200-1/2)	
S-LOC 9R	1160/24		500 (500-1/2)	

ELEV 680	TDZE 660
093° 5 NM from FAF	
HIRL all Rwys	
TDZ/CL all Rwys except 4L	
FAF to MAP 5 NM	
Knots	60 90 120 150 180
Min:Sec	5:00 3:20 2:30 2:00 1:40

EC-3, 31 DEC 2020 to 28 JAN 2021

EC-3, 31 DEC 2020 to 28 JAN 2021