

ILS PRM RWY 28C (CAT II & III) (CLOSE PARALLEL) CHICAGO O'HARE INTL (ORD)

LOC/DME I-VZE 108.95 Chan 26 (Y)	APP CRS 273°	Rwy ldg 10800 TDZE 651 Apt Elev 680
--	------------------------	--

Aircraft not GPS equipped - RADAR required for procedure entry.
DME or RADAR required.
From VOGLR: RNAV 1-GPS required.

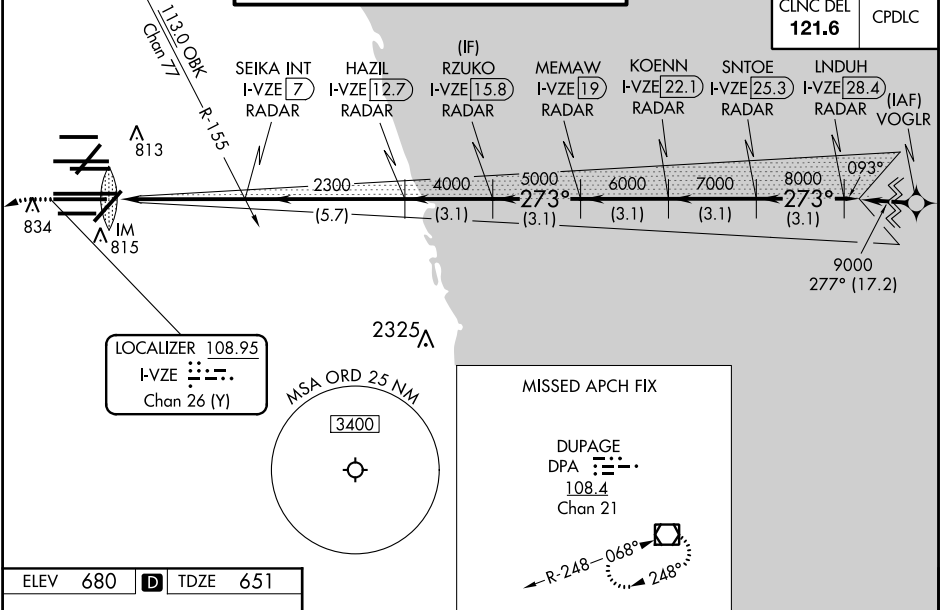
ALSIF-2

MISSED APPROACH:
Climb to 1100 then climbing left turn to 4000 on heading 215° and DPA VOR/DME R-082 to DPA VOR/DME and hold.

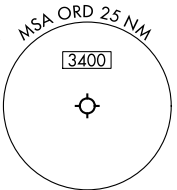
Simultaneous approach authorized. Use of FD or AP required during simultaneous operations. Dual VHF comm required. See additional requirements on AAUP.
CAT II: RVR 1000 authorized with specific OPSPEC, MSPEC, or LOA approval and use of autoland or HUD to touchdown.

D-ATIS 135.4 282.225	CHICAGO APP CON 119.0 292.125	O'HARE TOWERS 128.15 348.0 (Rwy 9L/27R) 133.0 348.0 (10R/28L) 120.75 121.15 126.9 132.7 348.0 (CENTER) PRM 119.625	GND CON (TWR CENTER) 124.125 (TWR NORTH) 121.75 (OBND) 118.05 (TWR SOUTH) 121.9 (IBND) 226.675 (ALL TWRS)
--	---	--	---

CLNC DEL 121.6	CPDLC
--------------------------	-------



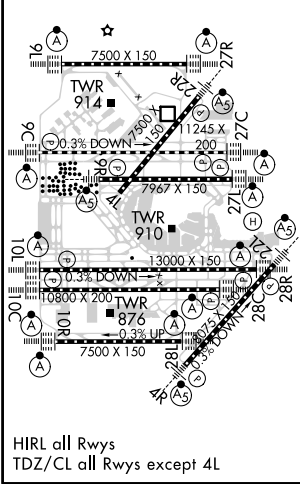
LOCALIZER 108.95
I-VZE
Chan 26 (Y)



MISSED APCH FIX

DUPAGE
DPA
108.4
Chan 21

ELEV 680	D	TDZE 651
-----------------	----------	-----------------



1100	4000	DPA	DPA	VGSI and ILS glidepath not coincident (VGSI Angle 3.00/TCH 80).	LINDUH I-VZE [28.4]
↑	hdg 215°	R-082	<input checked="" type="checkbox"/>		RADAR
					RZUKO I-VZE [15.8] RADAR
					KOENN I-VZE [22.1] RADAR
					SNTOE I-VZE [25.3] RADAR
					SEIKA INT I-VZE [7] RADAR
					HAZIL I-VZE [12.7] RADAR
					MEMAW I-VZE [19] RADAR
					2300
					4000
					5000
					6000
					7000
					8000
					9000
					GS 3.00° TCH 55
					← 1044' →
	5 NM	5.7 NM	3.1 NM	3.1 NM	3.1 NM
CATEGORY	A		B		D
S-ILS 28C	CAT II RA 105/12 100 DA 751				
S-ILS 28C	CAT III RVR 06				

CATEGORY II & III ILS - SPECIAL AIRCREW & AIRCRAFT CERTIFICATION REQUIRED

EC-3, 31 DEC 2020 TO 28 JAN 2021

EC-3, 31 DEC 2020 TO 28 JAN 2021