

LOC/DME I-BYW 110.9 Chan 46	APP CRS 091°	Rwy Idg 7500	TDZE 680	Apt Elev 680
--	------------------------	-----------------	-------------	-----------------

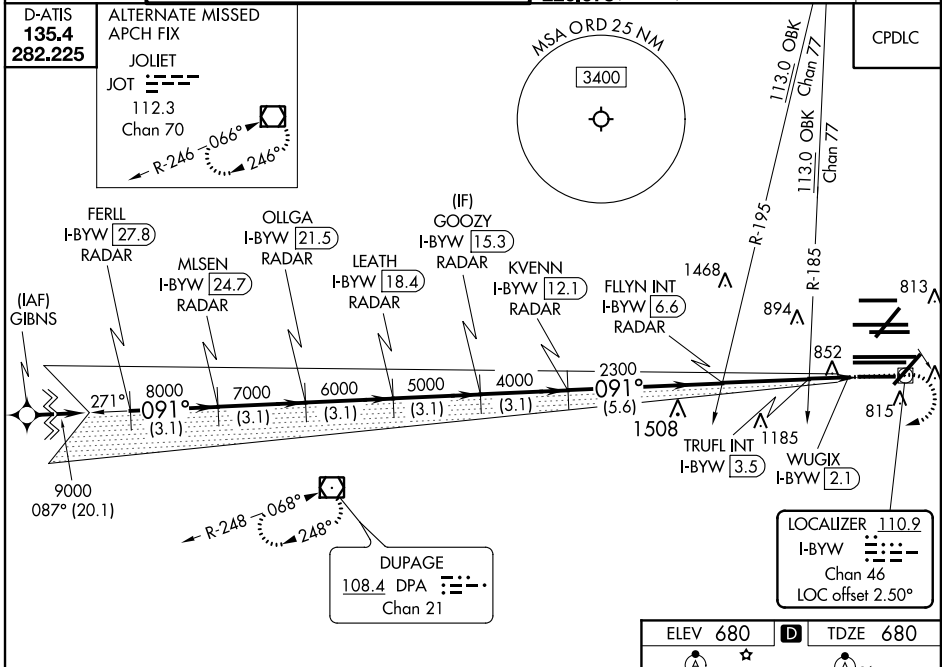
ILS Y or LOC Y RWY 10R

CHICAGO O'HARE INTL (ORD)

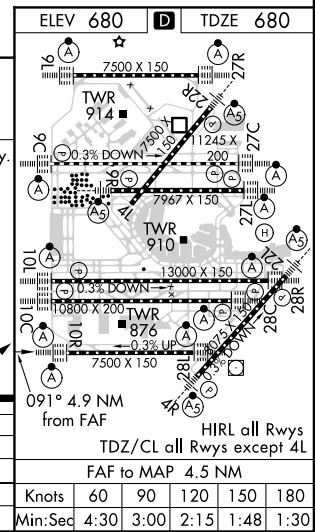
RNAV 1-GPS or RADAR required for procedure entry. DME or RADAR required.
From GIBNS: RNAV-1 GPS required.

⚠ Simultaneous approach authorized. Inop table does not apply to S-ILS 10R all Cats.
For inop ALS, increase S-LOC 10R Cat A and B visibility to 1 SM.
Rwy 10R helicopter visibility reduction below 3/4 SM NA.

CHICAGO APP CON 119.0 292.125	O'HARE TOWERS 128.15 348.0 (Rwy 9L/27R) 133.0 348.0 (10R/28L) 126.9 132.7 348.0 (CENTER)	GND CON 124.125 (TWR NORTH) 118.05 (TWR SOUTH) 226.675 (ALL TWS)	(TWR CENTER) 121.75 (OBND) 121.9 (IBND)	CLNC DEL 121.6
---	--	--	---	--------------------------



FERLL I-BYW RADAR [27.8]	OLLGA I-BYW RADAR [21.5]	GOOZY I-BYW RADAR [15.3]	FLYIN INT I-BYW [6.6]	TRUFL INT I-BYW [3.5]	WUGIX I-BYW [2.1]
9000	8000	7000	6000	5000	4000
3.1 NM	3.1 NM	3.1 NM	3.1 NM	5.6 NM	3.1 NM
A			B		D
*LOC only					
GS 3.00° TCH 55					
2300 *1220					
DUPAGE 108.4 DPA Chan 21					
LOCALIZER 110.9 I-BYW Chan 46 LOC offset 2.50°					



EC-3, 31 DEC 2020 to 28 JAN 2021

EC-3, 31 DEC 2020 to 28 JAN 2021