

LOC/DME I-HZJ 110.75 Chan 44 (Y)	APP CRS 094°	Rwy Idg 7500 TDZE 680 Apt Elev 680
---	------------------------	---

ILS Z RWY 10R (CAT II & III)

CHICAGO O'HARE INTL (ORD)

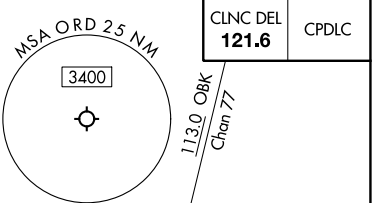
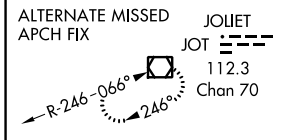
RNAV 1-GPS or RADAR required for procedure entry. DME or RADAR required.
From GIBNS: RNAV-1 GPS required.



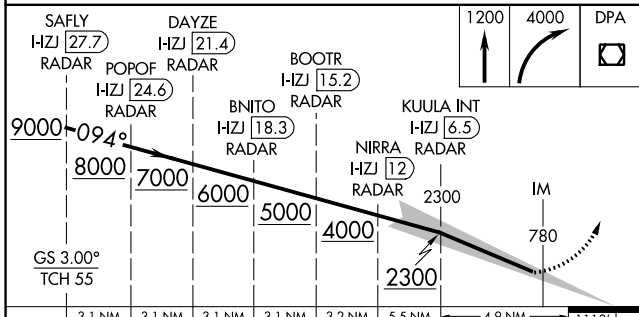
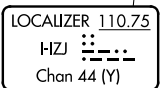
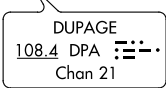
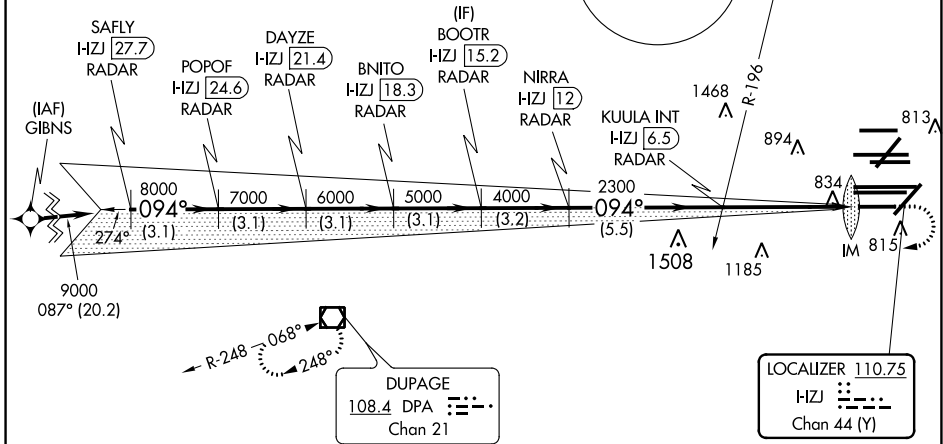
MISSED APPROACH:
Climb to 1200 then
climbing right turn to
4000 direct DPA
VOR/DME and hold.

Simultaneous approach authorized. CAT II: RVR 1000 authorized with specific
OPSPEC, MSPEC, or LOA approval and use of autoland or HUD to touchdown.

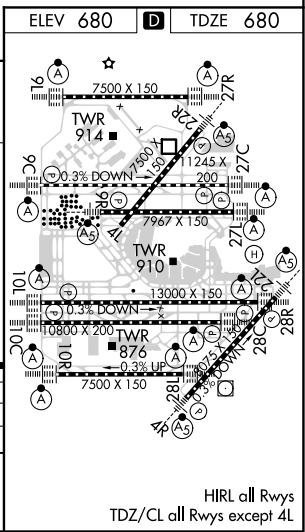
D-ATIS 135.4 282.225	CHICAGO APP CON 119.0 292.125	O'HARE TOWERS 128.15 348.0 (Rwy 9L/27R) 133.0 348.0 (10R/28L) 120.75 121.15 126.9 132.7 348.0 (CENTER)	GND CON (TWR NORTH) 124.125 (TWR SOUTH) 118.05 226.675 (ALL TWRS)	(TWR CENTER) (OBND) 121.75 (IBND) 121.9
--	--	---	---	---



CLNC DEL 121.6	CPDLC
--------------------------	-------



	3.1 NM	3.1 NM	3.1 NM	3.1 NM	3.2 NM	5.5 NM	4.9 NM	1113'
CATEGORY	A		B		C		D	
S-ILS 10R	CAT II RA 110/12 100 DA 780							
S-ILS 10R	CAT III RVR 06							



HIRL all Rwys
TDZ/CL all Rwys except 4L

CATEGORY II & III ILS - SPECIAL AIRCREW & AIRCRAFT CERTIFICATION REQUIRED

EC-3, 31 DEC 2020 to 28 JAN 2021

EC-3, 31 DEC 2020 to 28 JAN 2021