

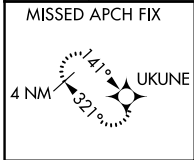
WAAS CH 70643 W27D	APP CRS 273°	Rwy Idg 11245 TDZE 653 Apt Elev 680
--	------------------------	--

RNAV (GPS) RWY 27C

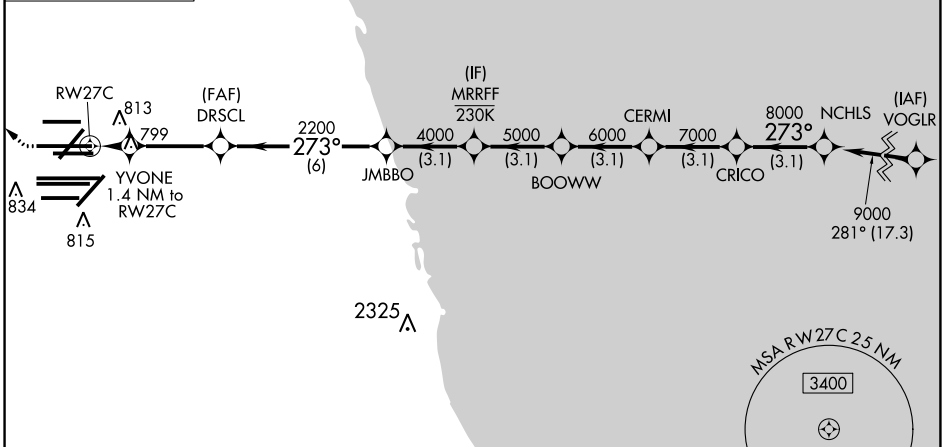
CHICAGO O'HARE INTL (ORD)

RNP APCH. Simultaneous approach authorized. LNAV procedure NA during simultaneous operations. Use of FD or AP required during simultaneous operations. For uncompensated Baro-VNAV systems, LNAV/VNAV NA below -19°C or above 54°C. For inop ALS, increase LNAV Cat C/D visibility to RVR 6000.	ALS F-2 	MISSED APPROACH: Climb to 1100 then climbing right turn to 4000 direct UKUNE and hold.
--	-------------	---

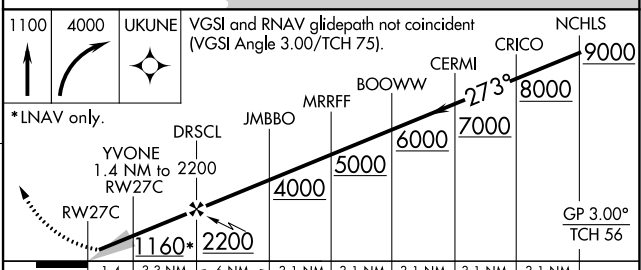
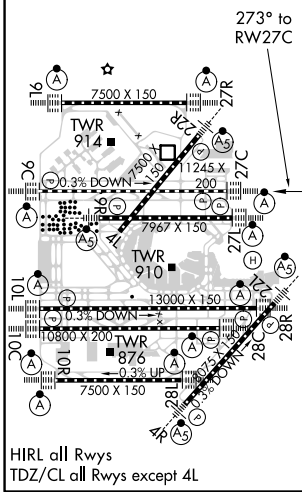
D-ATIS 135.4	CHICAGO APP CON 128.15 119.0 292.125	O'HARE TOWERS 133.0 348.0 (10R/28L) 348.0 (CENTER)	GND CON (TWR CENTER) 124.125 (TWR NORTH) 118.05 (TWR SOUTH) 226.675 (ALL TWRs)	(TWR CENTER) 121.75 (OBND) 121.9 (IBND)
------------------------	--	--	--	---



CLNC DEL 121.6	CPDLC
--------------------------	-------



ELEV 680	D	TDZE 653
----------	----------	----------



CATEGORY	A	B	C	D
LPV DA		853/18	200 (200-1/2)	
LNAV/VNAV DA		1086/40	433 (500-3/4)	
LNAV MDA	1060/24	407 (400-1/2)	1060/40	407 (400-3/4)

EC-3, 31 DEC 2020 to 28 JAN 2021

EC-3, 31 DEC 2020 to 28 JAN 2021