

WAAS CH 58143 W09D	APP CRS 093°	Rwy ldg TDZE Apt Elev	11245 673 680
--	------------------------	-----------------------------	--

RNAV (GPS) RWY 9C

CHICAGO O'HARE INTL (O.R.D)

RNP APCH.

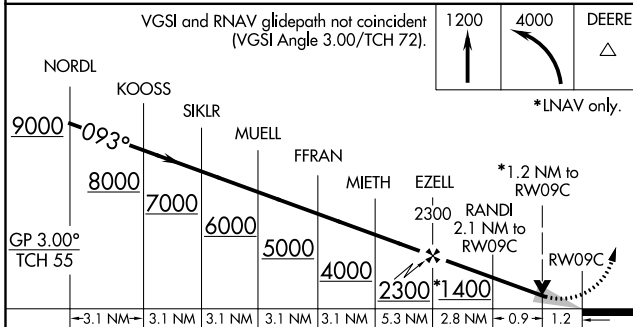
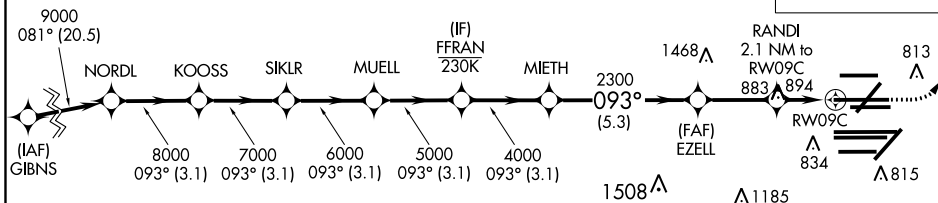
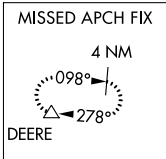
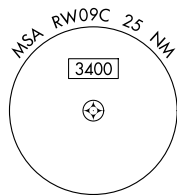
Simultaneous approach authorized. LNAV procedure NA during simultaneous operations. Use of FD or AP required during simultaneous operations. For uncompensated Baro-VNAV systems, LNAV/VNAV NA below -19°C or above 54°C. For inop ALS, increase LNAV/VNAV all cats visibility to RVR 4500 and LNAV Cat C/D to 1% SM.



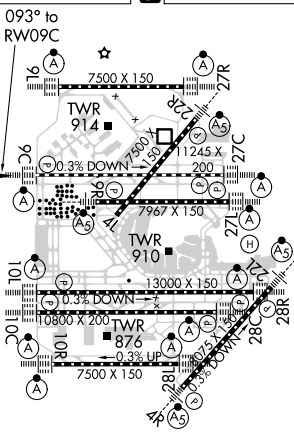
MISSED APPROACH: Climb to 1200 then climbing left turn to 4000 direct DEERE and hold.

D-ATIS 135.4 282.225	CHICAGO APP CON 119.0 292.125	O'HARE TOWERS 128.15 348.0 (Rwy 9L/27R) 133.0 348.0 (10R/28L) 120.75 121.15 126.9 132.7 348.0 (CENTER)	GND CON (TWR NORTH) 124.125 (TWR SOUTH) 118.05 (ALL TWRs) 226.675	(TWR CENTER) (OBND) 121.75 (LBND) 121.9
--	--	--	---	---

CLNC DEL 121.6	CPDLC
--------------------------	-------



ELEV 680	TDZE 673
----------	----------



CATEGORY	A	B	C	D
LPV DA		873/18	200 (200-½)	
LNAV/VNAV DA		976/24	303 (300-½)	
LNAV MDA	1140/24	467 (500-½)	1140/50	467 (500-1)

HIRL all Rwys
TDZ/CL all Rwys except 4L

EC-3, 31 DEC 2020 to 28 JAN 2021

EC-3, 31 DEC 2020 to 28 JAN 2021