

WAAS CH 99508 W09B	APP CRS 093°	Rwy ldg 7500 TDZE 668 Apt Elev 680
--	------------------------	---

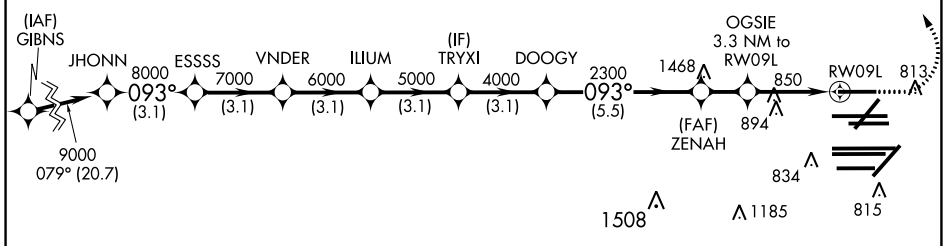
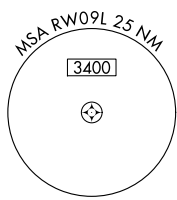
RNAV (GPS) RWY 9L

CHICAGO O'HARE INTL (ORD)

RADAR required for procedure entry. RNP APCH.		ALSIF-2 	MISSED APPROACH: Climb to 1100 then climbing left turn to 4000 direct OBK VOR/DME and hold, continue climb-in-hold to 4000.
<p>Simultaneous approach authorized. LNAV procedure NA during simultaneous operations. Use of FD or AP providing RNAV track guidance required during simultaneous operations. For uncompensated Baro-VNAV systems, procedure NA below -19°C or above 54°C.</p>			

CHICAGO APP CON 119.0 292.125	O'HARE TOWERS 128.15 348.0 (Rwy 9L/27R) 133.0 348.0 (10R/28L) 120.75 121.15 126.9 132.7 348.0 (CENTER)	GND CON 124.125 (TWR NORTH) 118.05 (TWR SOUTH) 226.675 (ALL TWRS)	(TWR CENTER) 121.75 (OBND) 121.9 (IBND)	CLNC DEL 121.6
---	--	---	---	--------------------------

D-ATIS 135.4 282.225	NORTHBROOK OBK 	CPDLC
--	--------------------	-------



ELEV 680		TDZE 668	
093° to RW09L		*LNAV only.	
JHONN 9000	ESSSS 7000	VNDER 6000	ILIUM 5000
093°	TRYXI 4000	DOOGY 2300	ZENAH 1760
GP 3.00° TCH 55	OGSIE 3.3 NM to RW09L	RW09L	
3.1 NM	3.1 NM	3.1 NM	3.1 NM
3.1 NM	3.1 NM	5.5 NM	1.7 NM
2.1 NM	1.2 NM		
1100	4000	OBK	
LPV DA	868/18		200 (200-½)
LNAV/VNAV DA	1034/35		366 (400-¾)
LNAV MDA	1100/24	432 (500-½)	1100/40 432 (500-¾)

