

WAAS CH 78204 W09A	APP CRS 093°	Rwy Idg 7709 TDZE 660 Apt Elev 680
--	------------------------	---

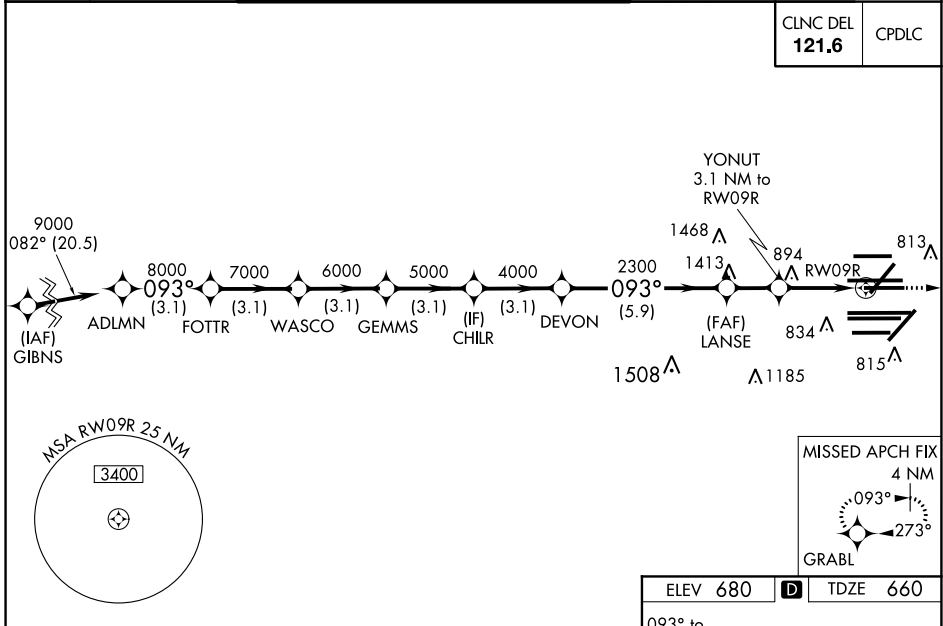
RNAV (GPS) RWY 9R

CHICAGO O'HARE INTL (ORD)

RADAR required for procedure entry. RNP APCH.

<p>Simultaneous approach authorized. For uncompensated Baro-VNAV systems, LNAV/VNAV NA below -19°C or above 54°C. LNAV procedure NA during simultaneous operations. Use of FD or AP providing RNAV track guidance required during simultaneous operations. For inop ALS, increase LNAV/VNAV all Cats visibility to RVR 6000, and LNAV Cat C/D visibility to 1 3/8 SM.</p>	<p>MALSR</p>	<p>MISSED APPROACH: Climb to 4000 direct GRABL and hold.</p>
	<p>CLNC DEL 121.6 CPDLC</p>	

D-ATIS 135.4 282.225	CHICAGO APP CON 119.0 292.125	O'HARE TOWERS 128.15 348.0 (Rwy 9L/27R) 133.0 348.0 (10R/28L) 120.75 121.15 126.9 132.7 348.0 (CENTER)				GND CON (TWR NORTH) 124.125 (TWR SOUTH) 118.05 (ALL TWRs) 226.675	(TWR CENTER) 121.75 (OBND) 121.9 (IBND)
--	---	--	--	--	--	---	---



VGSi and RNAV glidepath not coincident (VGSi Angle 3.00/TCH 74).		4000 GRABL						
* NNAV only.								
ADLMN	FOTTR	WASCO	GEMMS	CHILR	DEVON	LANSE	YONUT	3.1 NM to RWY 9R
9000	8000	7000	6000	5000	4000	2300	1700	
GP 3.00° TCH 57								
	3.1 NM	3.1 NM	3.1 NM	3.1 NM	3.1 NM	5.9 NM	1.9 NM	1.8
CATEGORY	A		B		C		D	
LPV DA			860/18		200 (200-1/2)			
LNAV/VNAV DA			1070/40		410 (400-3/4)			
LNAV MDA	1160/24		500 (500-1/2)		1160/50		500 (500-1)	

ELEV 680 TDZE 660

093° to RWY 9R

TWR 914, TWR 910, TWR 876

7500 X 150, 10800 X 200, 7500 X 150

HIRL all Rwys
TDZ/CL all Rwys except 4L

EC-3, 31 DEC 2020 to 28 JAN 2021

EC-3, 31 DEC 2020 to 28 JAN 2021