

RNAV (GPS) PRM Y RWY 28L

(CLOSE PARALLEL)

CHICAGO O'HARE INTL (ORD)

WAAS CH 93839 W28E	APP CRS 275°	Rwy Idg TDZE Apt Elev	7500 667 680
--	------------------------	-----------------------------	---

RNP APCH. RADAR required.

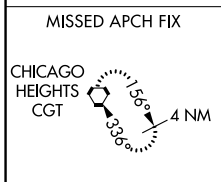
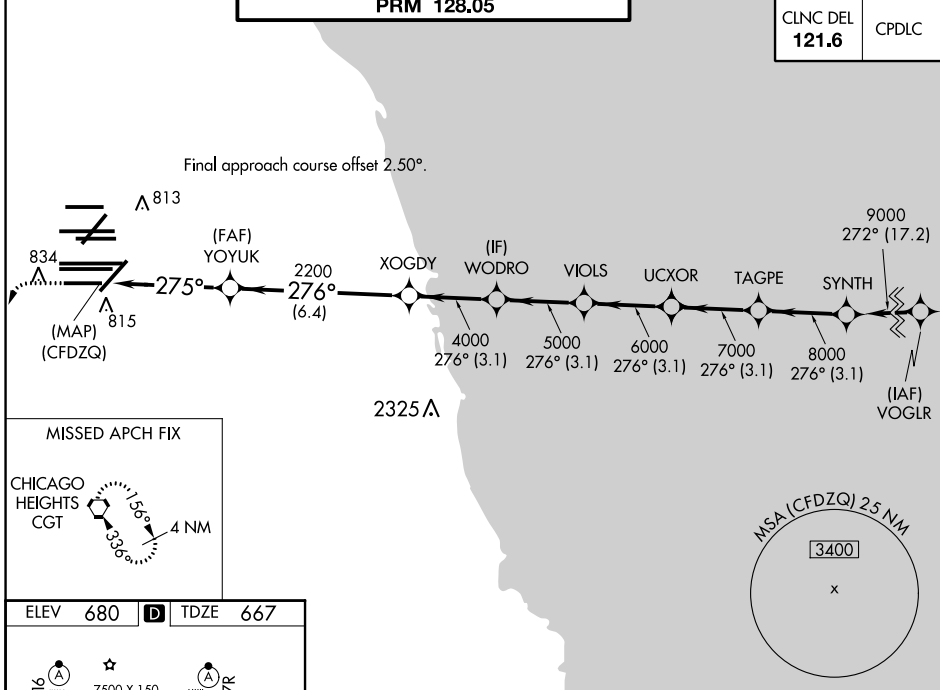
▼ For uncompensated Baro-VNAV systems, LNAV/VNAV NA below -19°C or above 54°C. Simultaneous approach authorized. Use of FD or AP required during simultaneous operations. Dual VHF comm required. See additional requirements on AAUP.

ALSIF-2

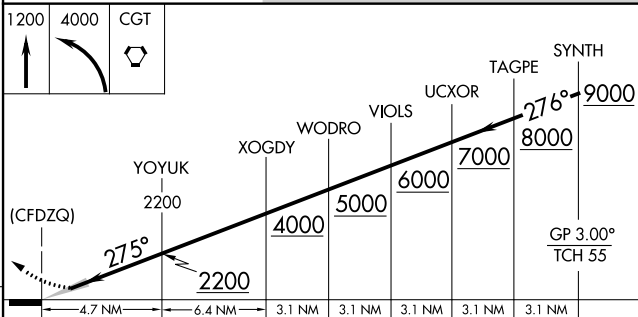
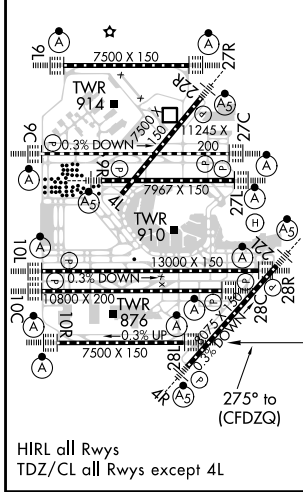
MISSED APPROACH: Climb to 1200 then climbing left turn to 4000 direct CGT VORTAC and hold.

D-ATIS 135.4 282.225	CHICAGO APP CON 119.0 292.125	O'HARE TOWERS 128.15 348.0 (Rwy 9L/27R) 133.0 348.0 (10R/28L) 120.75 121.15 126.9 132.7 348.0 (CENTER)	GND CON (TWR CENTER) 124.125 (TWR NORTH) 121.75 (OBND) 118.05 (TWR SOUTH) 121.9 (IBND) 226.675 (ALL TWRs)
--	---	---	---

CLNC DEL 121.6	CPDLC
--------------------------	-------



ELEV 680	D	TDZE 667
-----------------	----------	-----------------



CATEGORY	A	B	C	D
LPV DA		917/24	250 (300-½)	
LNAV/VNAV DA		1090/40	423 (500-¾)	

RNAV (GPS) PRM Y RWY 28L (CLOSE PARALLEL)

EC-3, 31 DEC 2020 to 28 JAN 2021

EC-3, 31 DEC 2020 to 28 JAN 2021