

APP CRS 273°	Rwy Idg TDZE Apt Elev	7782 654 680
------------------------	-----------------------------	---

RNAV (RNP) Y RWY 27L

CHICAGO O'HARE INTL (ORD)

▽ For uncompensated Baro-VNAV systems, procedure NA below -19°C (-2°F) or above 54°C (130°F). Simultaneous approach authorized. GPS required. Use of FD or AP providing RNAV track guidance required during simultaneous operations.

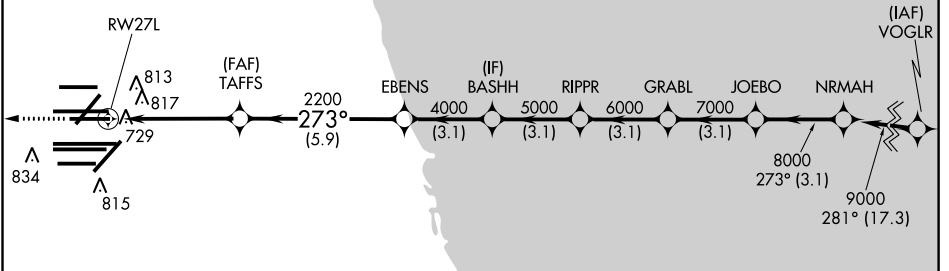
ALSIF-2

MISSED APPROACH:
Climb to 4000 on track 273° to WASCO and hold.

D-ATIS 135.4	CHICAGO APP CON 119.0 292.125	O'HARE TOWERS 128.15 348.0 (Rwy 9L/27R) 133.0 348.0 (10R/28L)	GND CON (TWR NORTH) 124.125	(TWR CENTER) 121.75	(IBND) 121.9
282.225		120.75 121.15 126.9 132.7 348.0 (CENTER)	118.05 (TWR SOUTH)		
			226.675 (ALL TWS)		

RADAR REQUIRED

CLNC DEL 121.6	CPDLC
--------------------------	-------

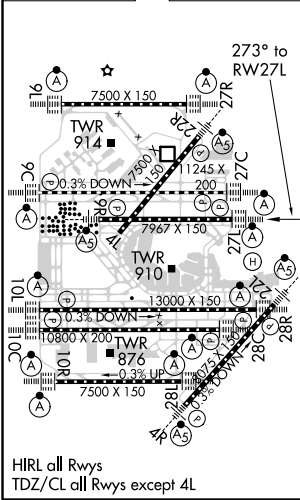


MISSED APCH FIX

WASCO

093°
273°
4 NM

ELEV 680	D	TDZE 654
-----------------	----------	-----------------



WASCO
↑ tr 273°

VGSI and RNAV glidepath not coincident (VGSI Angle 3.00/TCH 67).

	TAFFS	EBENS	BASHH	RIPPR	GRABL	JOEBO	NRMAH
	2200	4000	5000	6000	7000	8000	9000
	-4.7 NM	-5.9 NM	-3.1 NM	-3.1 NM	-3.1 NM	-3.1 NM	
CATEGORY	A	B	C	D			
RNP 0.15 DA		992/30	338 (400-%)				
RNP 0.30 DA		1162-1¼	508 (500-1¼)				

GP 3.00° TCH 55

AUTHORIZATION REQUIRED

EC-3, 31 DEC 2020 TO 28 JAN 2021

EC-3, 31 DEC 2020 TO 28 JAN 2021