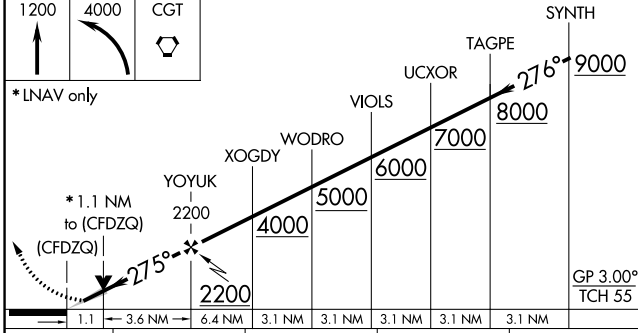
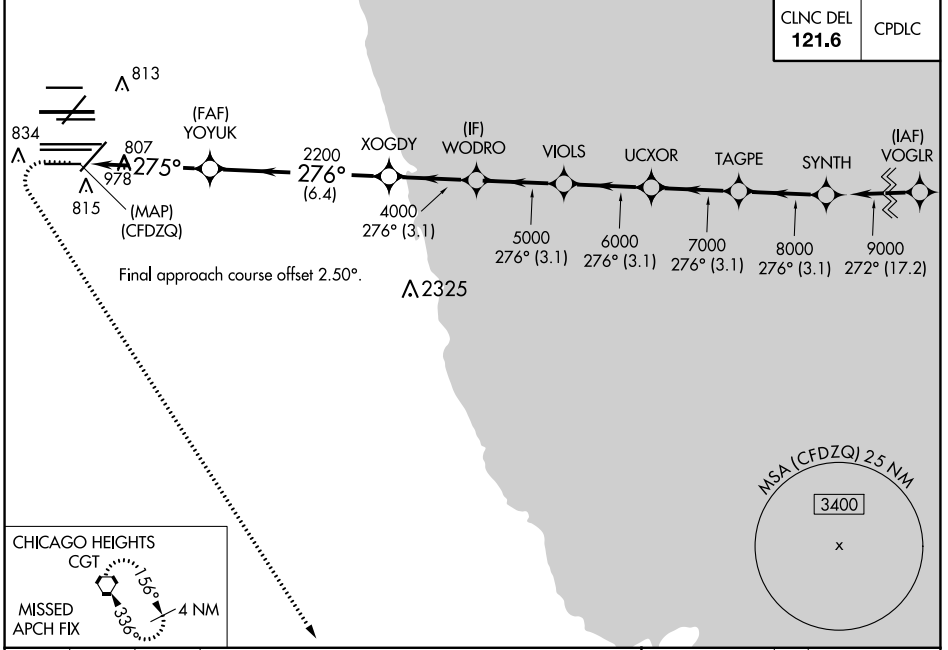


WAAAS CH 93839 W28E	APP CRS 275°	Rwy ldg TDZE 667 Apt Elev 680	7500 667 680
---	------------------------	---	---

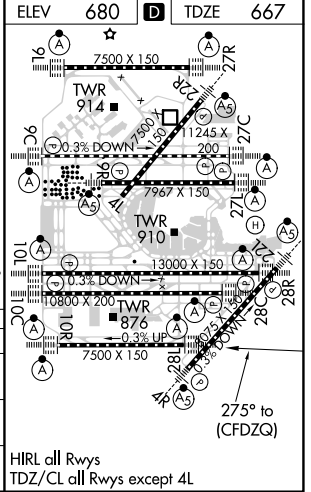
RNAV (GPS) Y RWY 28L

CHICAGO O'HARE INTL (ORD)

RNP APCH: Simultaneous approach authorized. LNAV procedure NA during simultaneous operations. For uncompensated Baro-VNAV systems, LNAV/VNAV NA below -19°C or above 54°C. Use of FD or AP required during simultaneous operations.		ALSF-2 	MISSED APPROACH: Climb to 1200 then climbing left turn to 4000 direct CGT VORTAC and hold.
D-ATIS 135.4 282.225	CHICAGO APP CON 119.0 292.125	O'HARE TOWERS 128.15 348.0 (Rwy 9L/27R) 133.0 348.0 (10R/28L) 120.75 121.15 126.9 132.7 348.0 (CENTER)	GND CON (TWR CENTER) 121.75 (OBND) (TWR NORTH) 121.85 (TWR SOUTH) 121.9 (IBND) 226.675 (ALL TWS)



CATEGORY	A	B	C	D
LPV DA	917/24	250 (300-1/2)		
LNAV/VNAV DA	1090/40	423 (500-3/4)		
LNAV MDA	1060/24	393 (400-1/2)	1060/35	393 (400-5/8)



EC-3, 31 DEC 2020 to 28 JAN 2021

EC-3, 31 DEC 2020 to 28 JAN 2021