

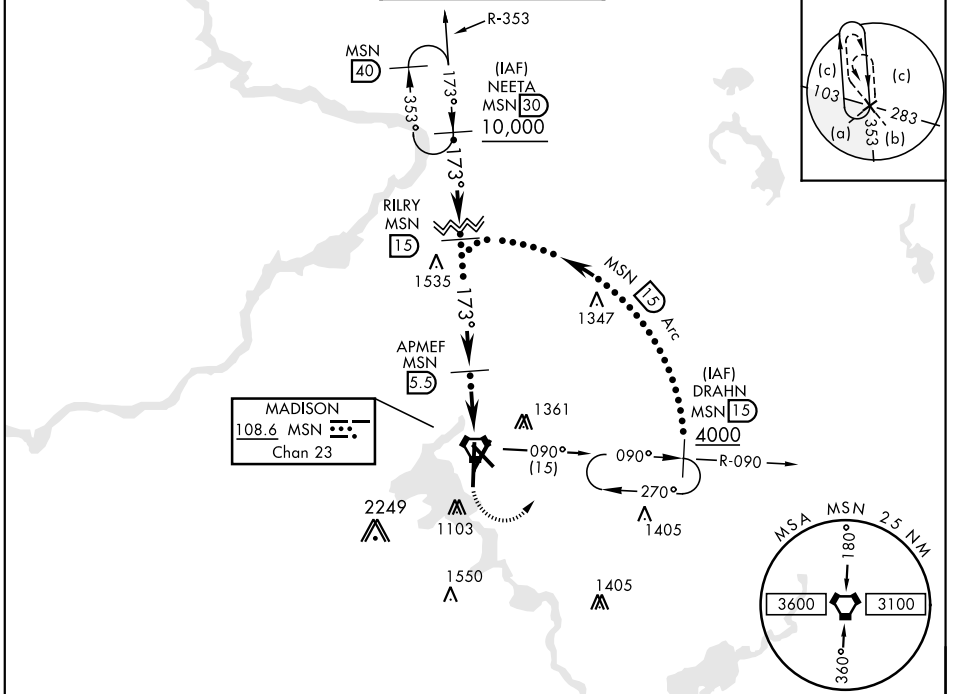
MADISON, WISCONSIN

# HI-TACAN RWY 18

VORTAC MSN <b>108.6</b> Chan <b>23</b>	APCH CRS <b>173°</b>	Rwy ldg TDZE <b>8606</b> Arprt Elev <b>887</b>	JAL-245 [USAF] MADISON/ DANE COUNTY REGIONAL-TRUAX FIELD (KMSN)
--	-------------------------	--	--

<b>M</b>	MALSR 	MISSED APPROACH: Climbing left turn to 4000 on MSN VORTAC R-090 to DRAHN 15 DME and hold.
----------	-----------	---

ATIS <b>124.65 278.3</b>	MADISON APP CON EAST <b>120.1 350.3</b> WEST <b>135.45 343.7</b>	MADISON TOWER ★ <b>119.3 0</b> (CTAF) <b>257.8</b>	GND CON <b>121.9 348.6</b>	ASR
-----------------------------	--	---	-------------------------------	-----

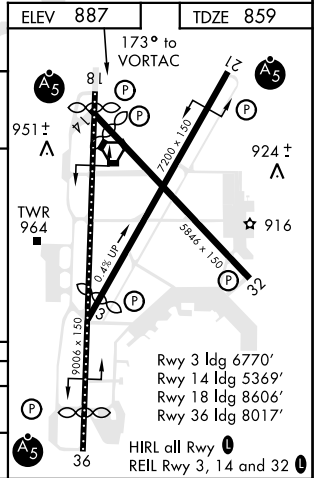
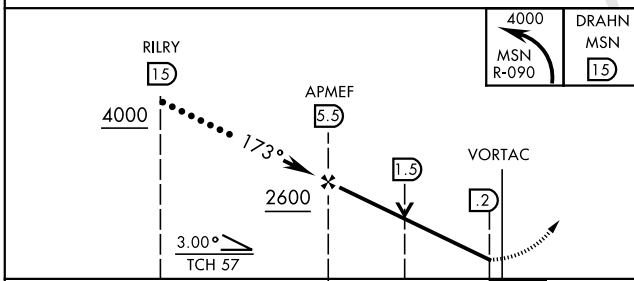


EC-3, 31 DEC 2020 to 28 JAN 2021

EC-3, 31 DEC 2020 to 28 JAN 2021

## RADAR REQUIRED

EMERG SAFE ALT 100 NM 3600



CATEGORY	C	D	E
S-18	1360/55	496	(500-1)
CIRCLING	1460-1½ 573 (600-1½)	1700-2¾ 813 (900-2¾)	1700-3 813 (900-3)

MADISON, WISCONSIN 43°08'N-89°20'W MADISON/ DANE COUNTY REGIONAL-TRUAX FIELD (KMSN)  
Amdt 1B 28FEB19

# HI-TACAN RWY 18