

LOC/DME I-DSZ 110.1	APP CRS 185°	Rwy Idg 8606
Chan 38		TDZE 864
		Apt Elev 887

ILS RWY 18 (SA CAT I & II)

DANE COUNTY RGNL-TRUAX FIELD (MSN)

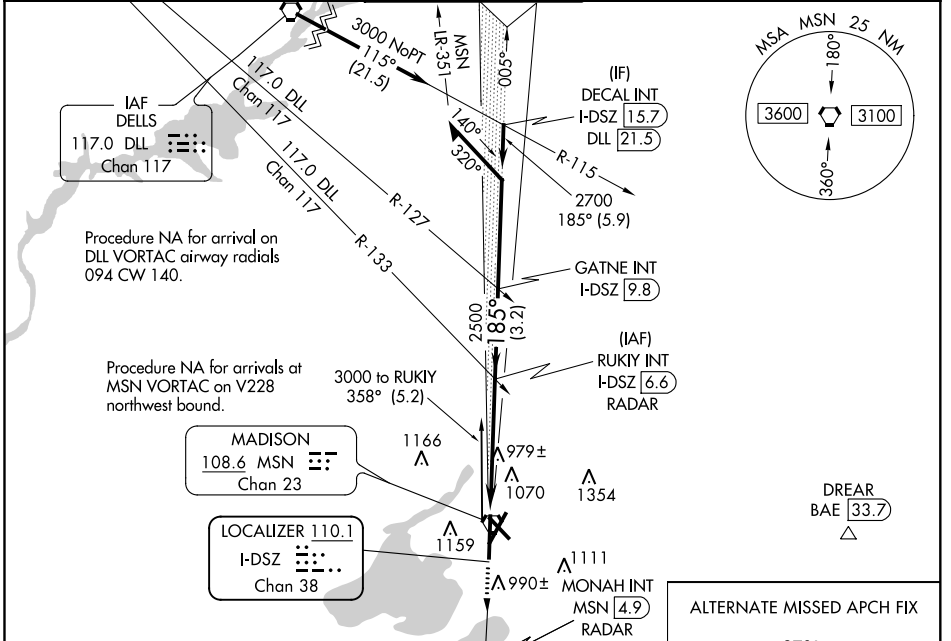
DME required.

Procedure NA when tower closed.
 SA CAT I: Requires specific OPSPEC, MSPEC, or LOA approval and use of HUD to DH.
 SA CAT II: Reduced lighting: Requires specific OPSPEC, MSPEC, or LOA approval and use of autoland or HUD to touchdown.

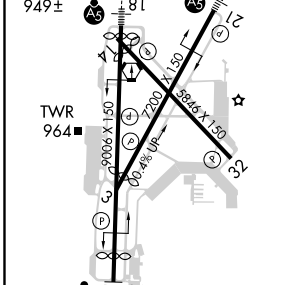
MALSR

MISSED APPROACH: Climb to 2700 on MSN VORTAC R-180 to MONAH INT/MSN VORTAC 4.9 DME/RADAR and hold.

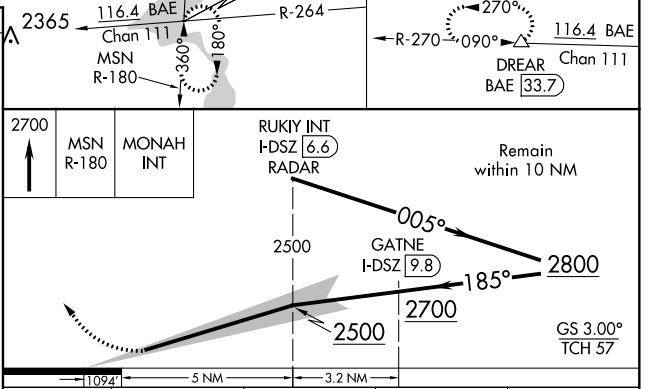
ATIS 124.65 278.3	MADISON APP CON ★ 135.45 343.7	MADISON TOWER ★ 119.3 (CTAF) 0 257.8	GND CON 121.9 348.6	CLNC DEL 121.625	UNICOM 122.95
-----------------------------	--	--	-------------------------------	----------------------------	-------------------------



ELEV 887	D	TDZE 864
-----------------	----------	-----------------



CATEGORY	A	B	C	D
S-ILS 18	SA CAT I	RA 153/14	150 DA 1014	
S-ILS 18	SA CAT II	RA 103/12	100 DA 964	



CATEGORY	A	B	C	D
S-ILS 18	SA CAT I	RA 153/14	150 DA 1014	
S-ILS 18	SA CAT II	RA 103/12	100 DA 964	

SA CATEGORY I & II ILS SPECIAL AIRCREW & AIRCRAFT CERTIFICATION REQUIRED

EC-3, 31 DEC 2020 to 28 JAN 2021

EC-3, 31 DEC 2020 to 28 JAN 2021